

**General_ITC215(237)-PW6M-XXX_
V2.625.0000000.2.R.210714_Release
Notes**



Foreword

Disclaimer

- These release notes are for reference only, and the actual product shall prevail.
- Succeeding products and release notes are subject to change without notice.
- If there is any uncertainty or controversy, please refer to our final explanation.

Trademarks

All the company names and trademarks mentioned herein are the properties of their respective owners.

Table of Contents

Foreword	II
Release Notes	1
1.1 Overview.....	1
1.2 New Features	1
1.3 Fixed Bugs.....	1
1.4 New Feature Details.....	1
1.5 Compatibility.....	1
1.6 Software Environment.....	1
1.7 Pending Issues	2
1.8 Update Guide	2

Release Notes

1.1 Overview

Item	Description
Product model	Access ANPR camera
Version	2.625.0000000.2.R.210714
Software package information	General_ITC215(237)-PW6M-XXX_Eng_PN_Oversea_ITCPUSH_AreaSwitch_V2.625.0000000.2.R.210714.zip
OS requirement	None
Release date	2021/07/14

1.2 New Features

No.	Feature Description
1	Support more regional license plate algorithm
2	Support new RS485 LED scree
3	This version fixes some bugs, improves the product performance, and strengthens product security on the basis of the last version.

1.3 Fixed Bugs

None

1.4 New Feature Details

None

1.5 Compatibility

Do not downgrade the program after it is updated to the latest version.

1.6 Software Environment

Platform	Model	Version
NVR	DH_NVR5XX X	DH_NVR5XXX-4KS2_MultiLang_V4.001.0000003.2.R.201010.zip
PMS	PMS	General_PMS_Eng_Basic_V1.004.10GP000.0.R.20200807.zip

Platform	Model	Version
Tool	Player	General_SmartPlayer- Win32_Eng_IS_V4.001.0000001.0.R.200916.zip
	ConfigTool	General_ConfigTool_ChnEng_V5.000.0000001.3.R.20200912. zip (customized version for update in public network)

1.7 Pending Issues

None

1.8 Update Guide

ConfigTool supports updating cameras one by one or in batches.

- Updating cameras one by one is ideal when few cameras are involved, and login usernames and passwords of the cameras are different.
- Updating cameras in batches is recommended when multiple cameras are involved, and login usernames and passwords of cameras are the same.

Preparation

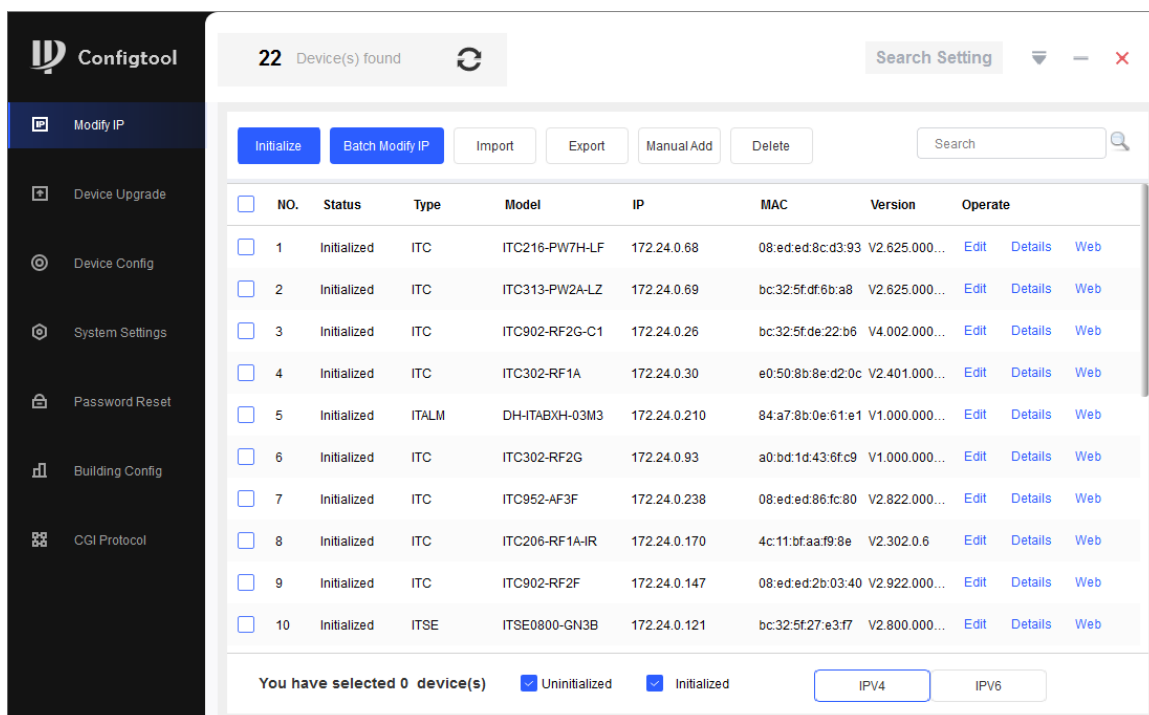
Before updating, make sure that:

- You have obtained the latest ConfigTool installation package (General_ConfigTool_ChnEng_V5.000.0000001.3.R.20200912). If not, go to our official website, and then obtain the tool from **Support > Download Center > Tools > Toolbox**.
- The IP address of the PC installed with ConfigTool and that of the camera are in the same network segment.

Procedure

Step 1 Open ConfigTool, and search for the camera, or you can manually enter the IP to search.

Figure 1-1 Devices found



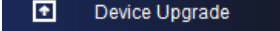
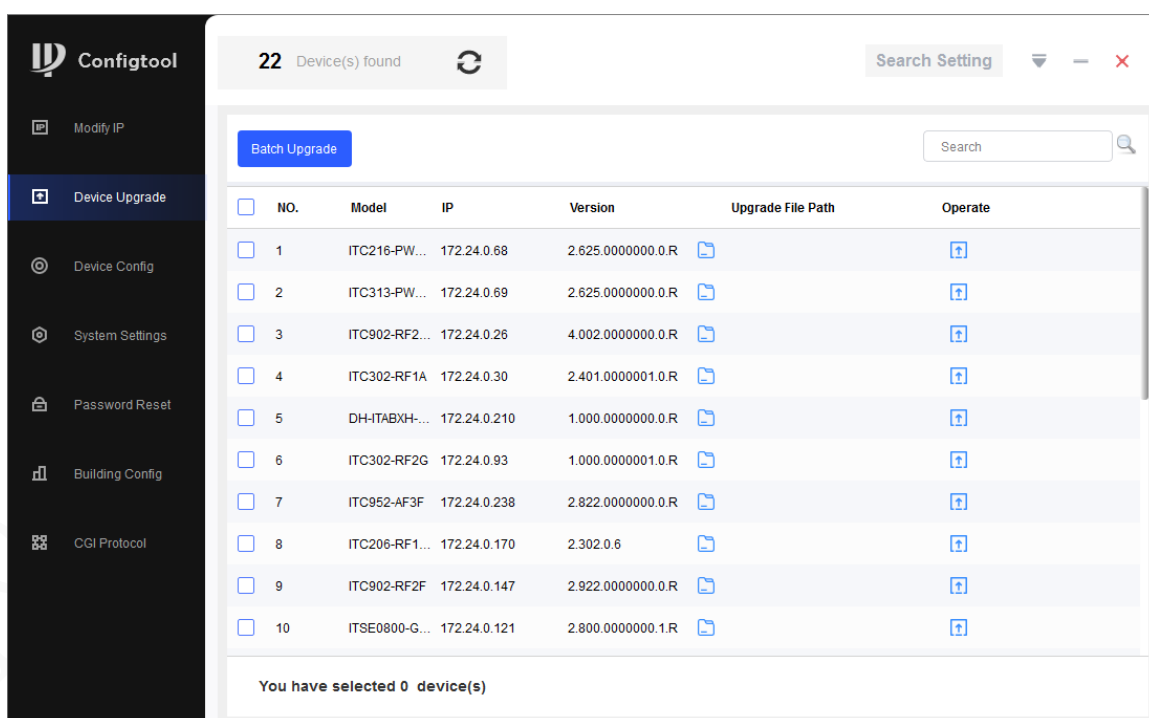
Step 2 Click , and the **Upgrade** interface is displayed.

Figure 1-2 Upgrade

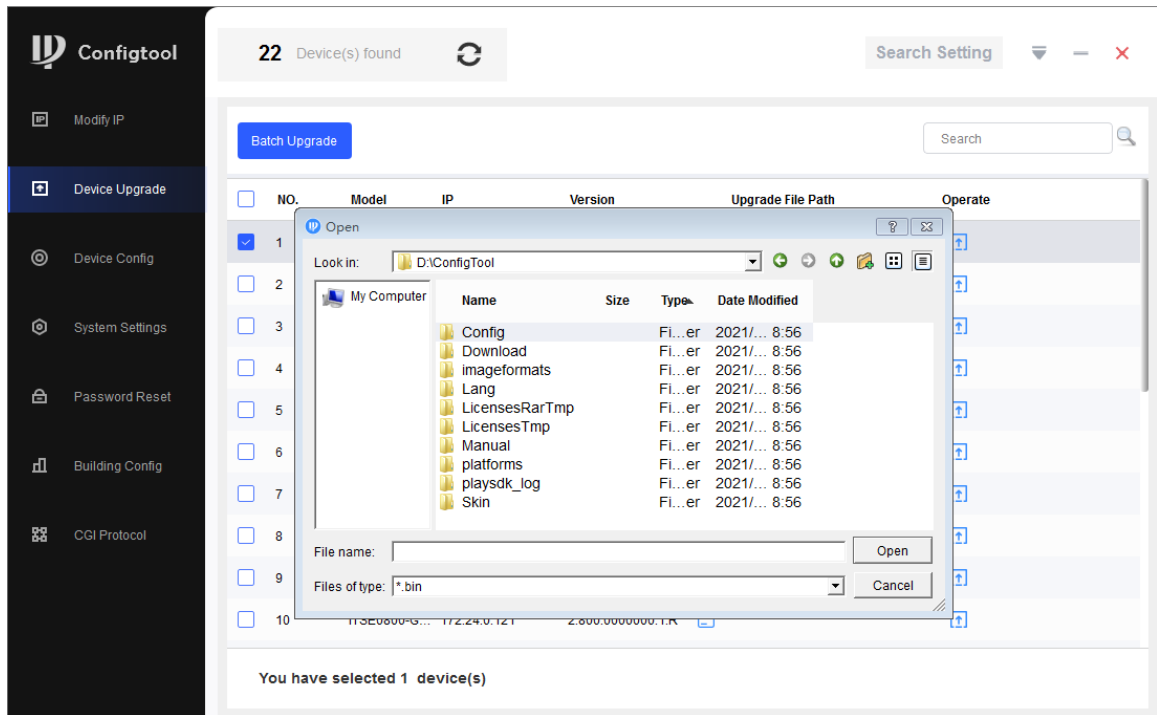


Step 3 Select the ITC (camera) to update.

- Update ITC one by one: Select the corresponding camera, and then click **Browse**.
- Update ITC in batches: Select multiple cameras, and then click **Batch Upgrade**.

Step 4 Select update file.

Figure 1-3 Select update file



Step 5 Update the camera.

- Update the cameras one by one: Click **Upgrade**, and the system starts updating. You can see the update progress.
- Update the cameras in batches: Click **OK**, and the system starts updating.



If the camera is disconnected from network during updating, as long as the ConfigTool stays on the update interface, the update will resume when the connection is restored.