

General_ITC215(237)-PW6M-XXX
V2.625.0000000.0.R.201105
Release Notes

Foreword

Disclaimer

- These release notes are for reference only, and the actual product shall prevail.
- Succeeding products and release notes are subject to change without notice.
- If there is any uncertainty or controversy, please refer to our final explanation.

Trademarks

All the company names and trademarks mentioned herein are the properties of their respective owners.

Table of Contents

| | |
|-----------------------------|----------|
| Foreword | I |
| Release Notes | 1 |
| 1 Overview | 1 |
| 2 New Features..... | 1 |
| 3 Fixed Bugs | 1 |
| 4 Compatibility..... | 1 |
| 5 Software Environment..... | 1 |
| 6 Pending Issues..... | 1 |
| 7 Update Guide | 2 |

Release Notes

1 Overview

| Item | Description |
|------------------------------|--|
| Product model | ITC215/237-PW6M ANPR camera |
| Version | V2.625.0000000.0.R. |
| Software package information | General_ITC215(237)-PW6M-XXX_Eng_PN_Oversea_ITCPUSH_AreaPack_V2.625.0000000.0.R.201105.zip |
| OS requirement | None |
| Release date | 2020/11/5 |

2 New Features

| No. | Feature Description |
|-----|----------------------|
| 1 | 更新车牌深度学习算法，支持欧洲区和俄语区 |

3 Fixed Bugs

None.

4 Compatibility

Do not downgrade the program after it is updated to the latest version.

5 Software Environment

| Platform | Model | Version |
|----------|----------------|---|
| NVR | NVR5XXX Series | General_NVR5XXX-4KS2_MultiLang_V4.001.0000000.0.R.200221 |
| PMS | PMS | General_PMS_Eng_Basic_V1.003.0000001.0.R.20191126.zip |
| Tool | Player | General_SmartPlayer-Win32_Eng_IS_V4.000.0000001.4.R.191009.zip |
| | ConfigTool | General_ConfigTool_ChnEng_V4.011.0000003.7.R.20200325.zip General_ConfigTool_ChnEng_V4.011.12MU000.0.T.20190118 (customized version for update in public network) |

6 Pending Issues

| No. | Issue description | Possible result | How to fix |
|-----|---------------------------|---------------------------|------------------------------|
| 1 | 杆式一体机在配套使用 PMS 平台时，部分显示异常 | 解决方案中搭配 PMS 和一体机使用时影响客户体验 | 如需使用一体机，可以提交 ITR 联系产品端或平台端处理 |

| No. | Issue description | Possible result | How to fix |
|-----|---------------------|-----------------|----------------------------------|
| 2 | 预览界-安装调试处有两个刷新和确认按钮 | 对使用者造成干扰 | 第一个 confirm 是确认调试参数，第二个确认是切换算法区域 |

7 Update Guide

ConfigTool supports updating cameras one by one or in batches.

- Updating cameras one by one is ideal when few cameras are involved, and login usernames and passwords of the cameras are different.
- Updating cameras in batches is recommended when multiple cameras are involved, and login usernames and passwords of cameras are the same.

Preparation

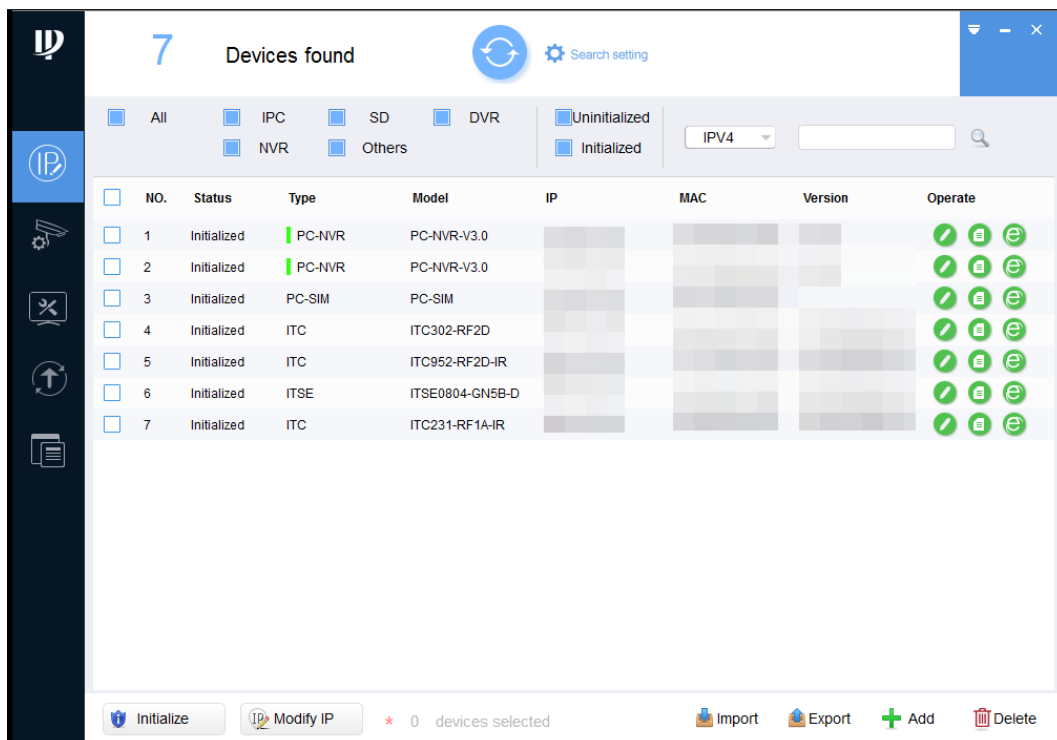
Before updating, make sure that:

- You have obtained the latest ConfigTool installation package (General_ConfigTool_ChnEng_V4.011.0000003.5.R.20190722). If not, go to our official website, and then obtain the tool from **Support > Download Center > Tools > Toolbox**.
- The IP address of the PC installed with ConfigTool and that of the camera are in the same network segment.

Procedure

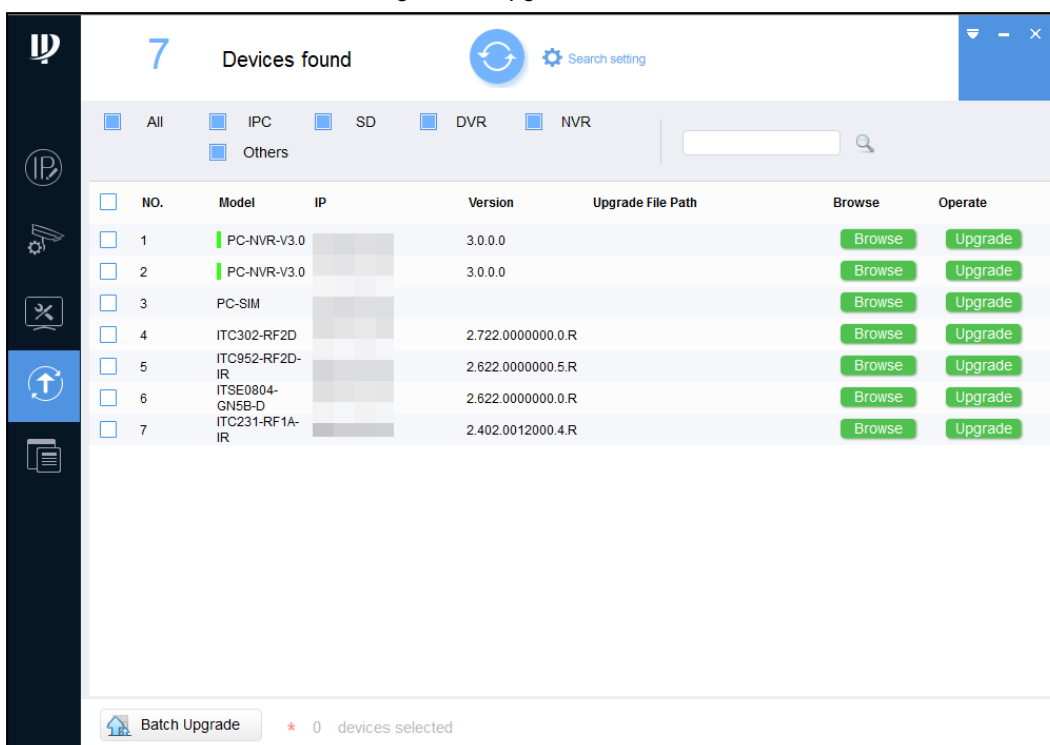
Step 1 Open ConfigTool, and search for the camera, or you can manually enter the IP to search.

Figure 7-1 Devices found



Step 2 Click , and the **Upgrade** interface is displayed.

Figure 7-2 Upgrade

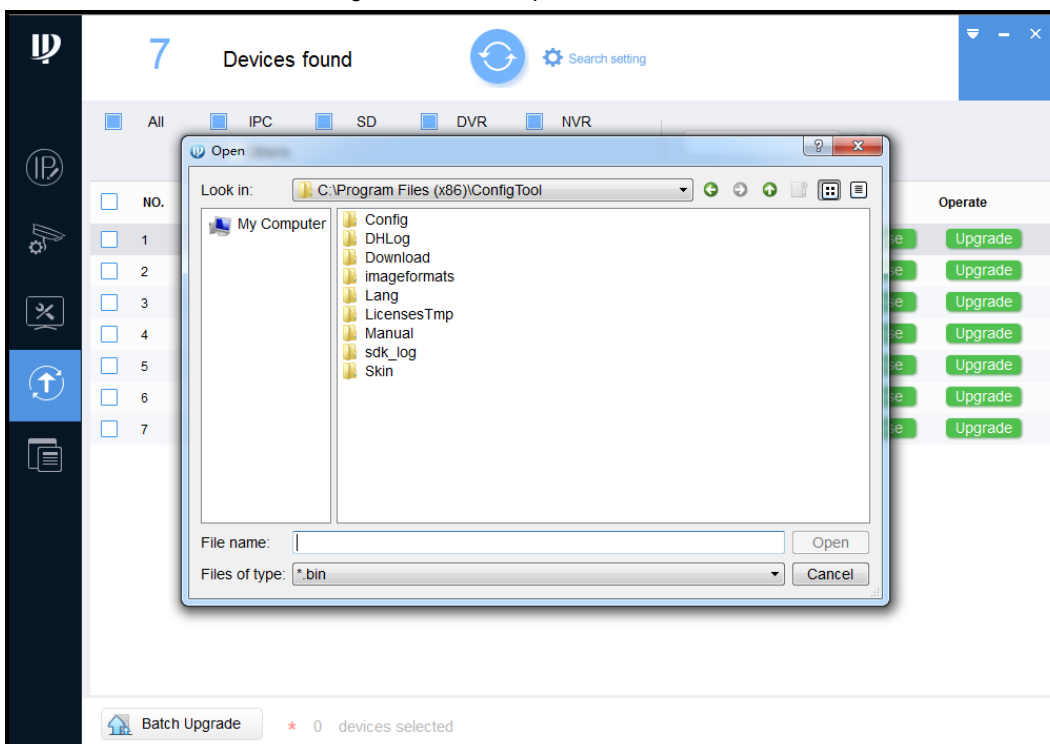


Step 3 Select the ITC (camera) to update.

- Update ITC one by one: Select the corresponding camera, and then click **Browse**.
- Update ITC in batches: Select multiple cameras, and then click **Batch Upgrade**.

Step 4 Select update file.

Figure 7-3 Select update file



Step 5 Update the camera.

- Update the cameras one by one: Click **Upgrade**, and the system starts updating. You can see the update progress.
- Update the cameras in batches: Click **OK**, and the system starts updating.



If the camera is disconnected from network during updating, as long as the ConfigTool stays on the update interface, the update will resume when the connection is restored.