



Dalton V2.820.0000000.31.R. 240423

Release Notes



Table of Contents

1 Release Notes.....	1
1.1 V2.820.000000.31.R.240423.....	1
1.2 V2.820.000000.29.R.240131.....	1
1.3 Software Environment.....	2
2 Update Guide.....	3
2.1 Introduction.....	3
2.2 Preparation.....	3
2.3 Instructions.....	3
2.3.1 Updating by ConfigTool.....	3
2.3.2 Updating through the Webpage.....	5
2.3.3 Cloud Update through the Webpage.....	6
2.3.4 Cloud Update through DMSS.....	6
2.4 Checking for Update Success	7
2.4.1 Checking the Result of Update by ConfigTool.....	7
2.4.2 Checking the Result of Update through the Webpage.....	8
2.4.3 Checking the Result of Update through DMSS.....	8

1 Release Notes

1.1 V2.820.0000000.31.R.240423

Release Date

May 11, 2024

New Features

- None.

Optimized Features

- Change the default address to connect to external products.

Fixed Bugs

- Fixed the security redline issue PSIRT-2024-03016.
- Fixed the issue that the device abnormally restarted when there were no streams.

Third-party Access

- ONVIF testing tool: V20.06
- ONVIF: Supports Profile G
- Milestone testing tool: Milestone XProtect Corporate 2019 R2
- GENETEC testing tool: Security Center Version 5.7SR1(5.7.529.12)

1.2 V2.820.0000000.29.R.240131

Release Date

February 29, 2024

New Features

- None.

Optimized Features

- None.

Fixed Bugs

- Fixed the issues of the device occasionally not having any streams and restarting on its own.
- Fixed the network security issues.
- Fixed other general issues.

Third-party Access

- ONVIF testing tool: V20.06
- ONVIF: Supports Profile G
- Milestone testing tool: Milestone XProtect Corporate 2019 R2
- GENETEC testing tool: Security Center Version 5.7SR1(5.7.529.12)

1.3 Software Environment

Category	Model	Version
NVR	NVR4X-4KS2	2.6.01.02.08774 DH_NVR4XXX-4KS2_MultiLang_V4.001.0000003.1.R.200813.zip
	NVR5X-4KS2	2.6.01.02.08557 DH_NVR5XXX-4KS2_MultiLang_V4.001.0000003.1.R.200813.zip
	NVR4X-I	2.6.01.02.03731 DH_NVR4XXX- I_MultiLang_NP_V4.000.0000000.1.R.20190809.zip
	NVR5X-I	2.6.01.02.03721 DH_NVR5XXX- I_MultiLang_NP_V4.000.0000000.1.R.20190809.zip
Platform	DSS Pro	2.7.01.02.01423General_DSS- PRO_Win64_IS_V7.002.0000005.0.R.20200414.exe
App	DMSS	iOS: 4.91.004; Android: 4.91.000
Tool	SmartPSS	2.7.05.01.00829 DH_SMARTPSS- Win64_ChngEng_IS_V2.003.0000002.0.R.200513.zip
	ConfigTool	2.8.02.01.00366 General_ConfigTool_ChngEng_V4.011.0000003.6.R.20200114.zip
	SmartPlayer	2.8.02.01.00303 General_SmartPlayer- Win32_Eng_IS_V4.000.0000001.4.R.191009.zip

2 Update Guide

2.1 Introduction

This document provides multiple update methods for the IPCs. Users can update the IPCs to the latest version according to the update guide. The update methods include updating by ConfigTool and DMSS app, through local update package, and cloud update on the webpage.

2.2 Preparation

Before the update, please ensure that the following conditions are met.

- Update by ConfigTool: The device can work normally; the computer is installed with ConfigTool; the device is on the same network as the computer; the update package is ready.
- Update by local package: The device can work normally; the device is on the same network as the computer that is used to log in to the webpage; the update package is ready.
- Cloud update on the webpage: The device can work normally and is connected to Internet; the device is on the same network as the computer that is used to log in to the webpage.
- Update by DMSS app: The device can work normally; the mobile phone is installed with DMSS app; the device is added to DMSS app.



- Check whether the device model and program version are correct before the update.
- Decompress the compressed program package when updating by the ConfigTool and through the local package.
- In addition to the main package, there is the algorithm package (firmware.bin). When updating the system by ConfigTool and local package, update the main package first, restart the device, and then update the algorithm package. If you select cloud update, the algorithm package will be automatically updated.
- In addition to the main package, there is the FPGA program package. Update the main package first, and then update the FPGA program package after restarting the device.

2.3 Instructions

2.3.1 Updating by ConfigTool

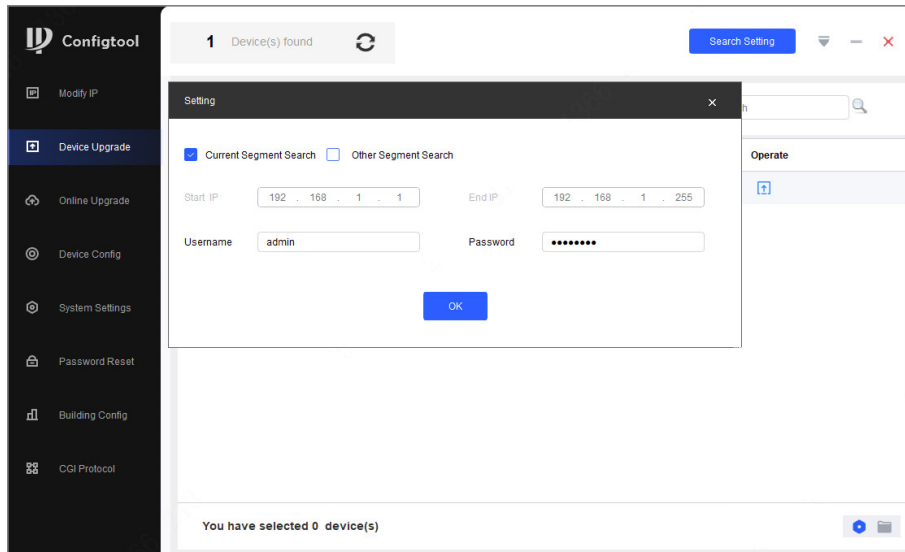
2.3.1.1 Updating One by One

Use this update method when you need to update a single device.

Procedure

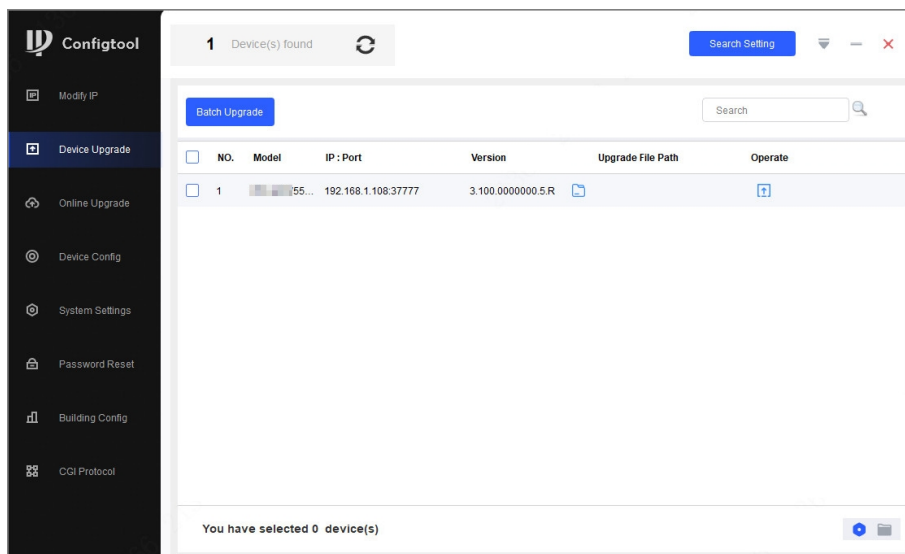
- Step 1 Open ConfigTool, and then select **Device Upgrade**.
- Step 2 Click **Search Setting** to set the search conditions.

Figure 2-1 Set search condition



Step 3 Select **Current Segment Search**, change the password to the IPC password, and then click **OK**.

Figure 2-2 View search result



Step 4 Click next to the device to be updated, and then select the update file.

Step 5 Click to start to update the system.

The device automatically restarts after the update is complete.



If the system update fails, check the prompt on the ConfigTool to see the reason.

2.3.1.2 Updating in Batches

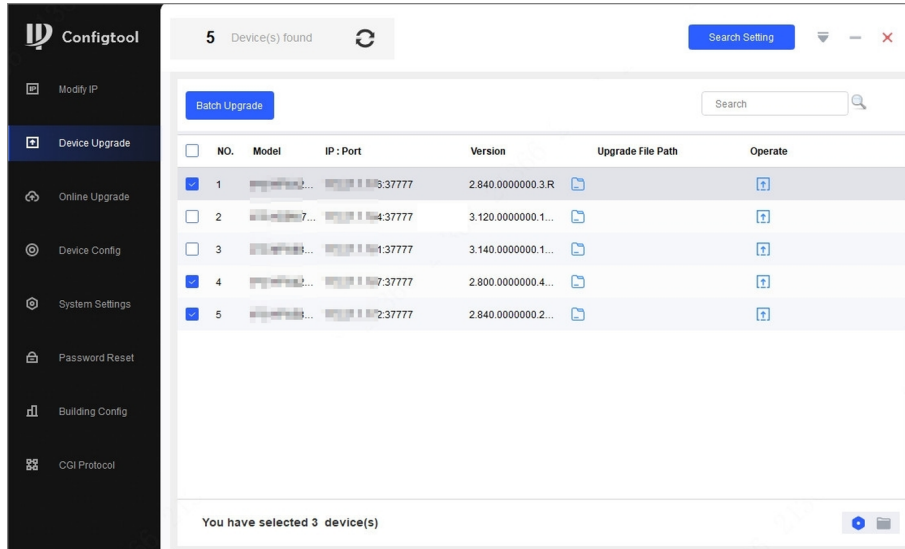
Use this method when you need to update multiple devices to the same software version.

Procedure

Step 1 Open ConfigTool, and then select **Device Upgrade**.

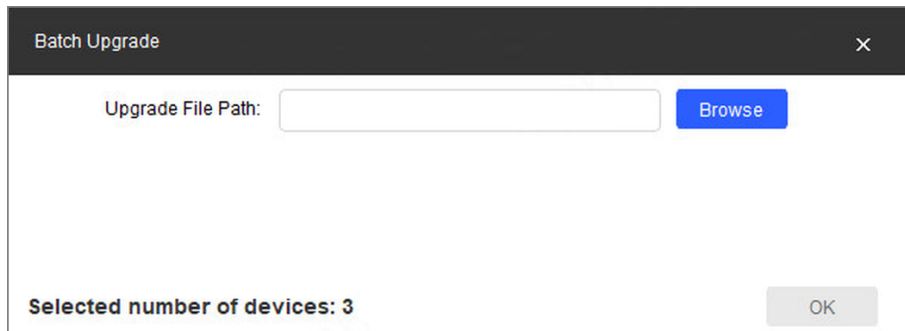
- Step 2 Click **Search Setting** to set the search conditions.
- Step 3 Select **Current Segment Search**, change the password to the IPC password, and then click **OK**.

Figure 2-3 View search result



- Step 4 Select the device to be updated, and then click **Batch Upgrade**.
- Step 5 Click **Browse** to select the update package.

Figure 2-4 Select update package



- Step 6 Click **OK** to start to update the system.
The device automatically restarts after the update is complete.



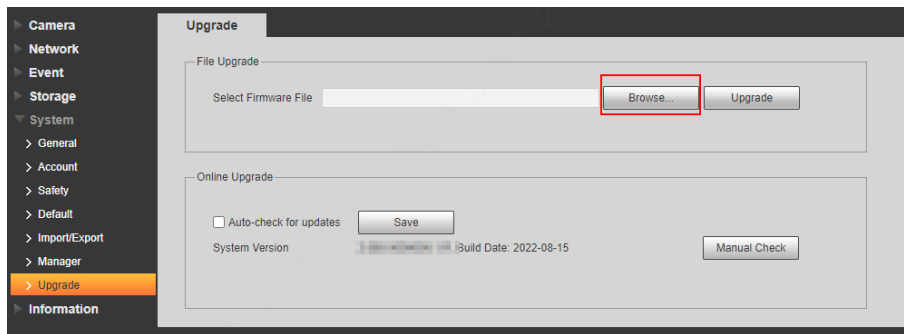
If the system update fails, check the prompt on the ConfigTool to see the reason.

2.3.2 Updating through the Webpage

Procedure

- Step 1 Log in to the webpage of the device.
- Step 2 Select **Settings** > **System** > **Update** to enter the system update page.

Figure 2-5 System update



Step 3 Click **Browse** , select the update file, and then click **Update**.

Do not cut off the power supply during the update process. The device automatically restarts when the update is complete.

Step 4 After the restart, you are redirected to the login page for you to log in to the device again.

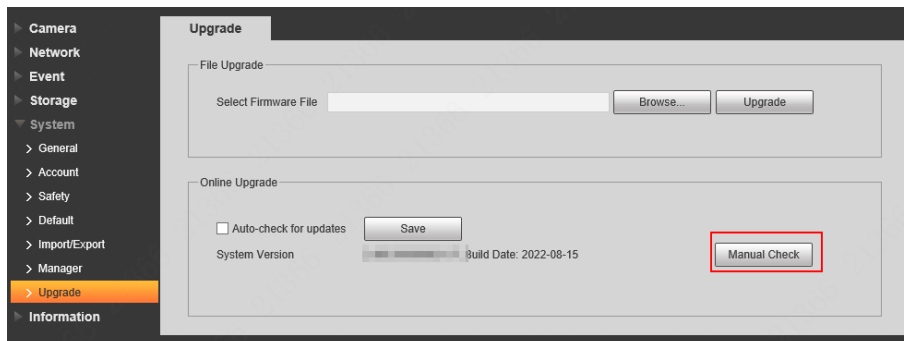
2.3.3 Cloud Update through the Webpage

Procedure

Step 1 Log in to the webpage of the device.

Step 2 Select **Settings** > **System** > **Update** to enter the system update page.

Figure 2-6 System update



Step 3 Click **Manual Check**.

Select Auto-check, and when a new version is available, the device automatically detects it.

Step 4 If a new version is available, click **Update Now**. The system downloads the version file and starts the update process.

Step 5 After the restart, you are redirected to the login page for you to log in to the device again.

2.3.4 Cloud Update through DMSS

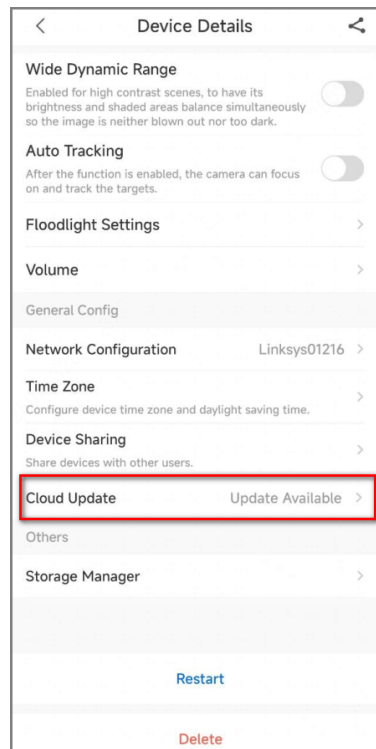
Procedure

Step 1 Open DMSS app.

Step 2 Select **Device Details**.

If it displays **Update Available** on **Cloud Update** area, then there is available new version for update.

Figure 2-7 Device details



- Step 3 Tap **Cloud Update** to go to the update page.
- Step 4 Confirm the **Current Version** and **Latest Version**, and then tap **Update**.
- Step 5 After being updated successfully, the device will restart.

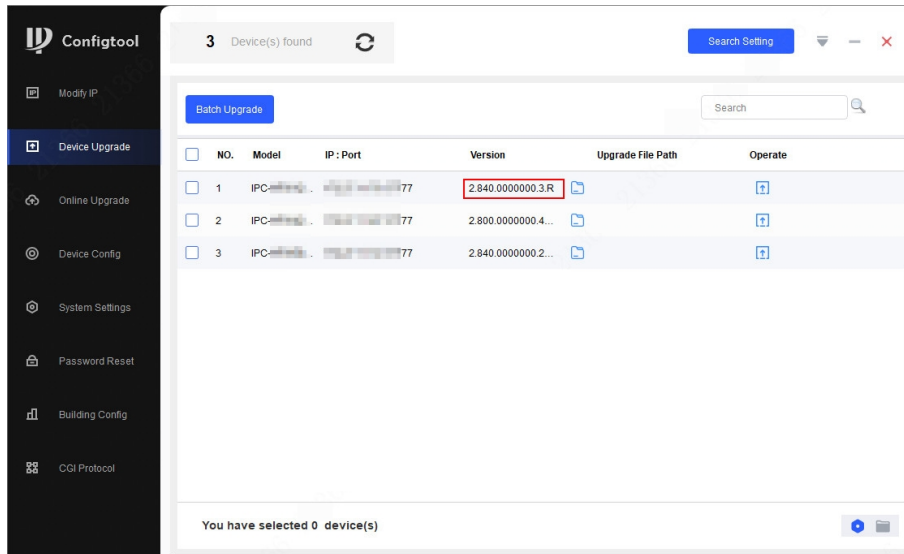
2.4 Checking for Update Success

2.4.1 Checking the Result of Update by ConfigTool

After the update is complete, wait until the device restarts. Click  to check the system version.

If the version is the same as the software version of the update package, it means the update is successful.

Figure 2-8 Check version information

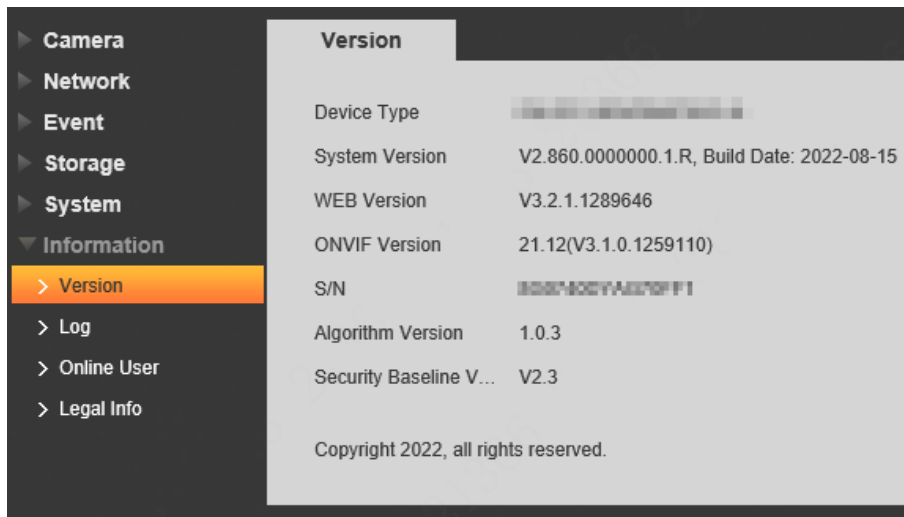


2.4.2 Checking the Result of Update through the Webpage

Procedure

- Step 1 Log in to the webpage of the device.
- Step 2 Select **Settings** > **Information** > **Version** to check the update result.

Figure 2-9 Check update result

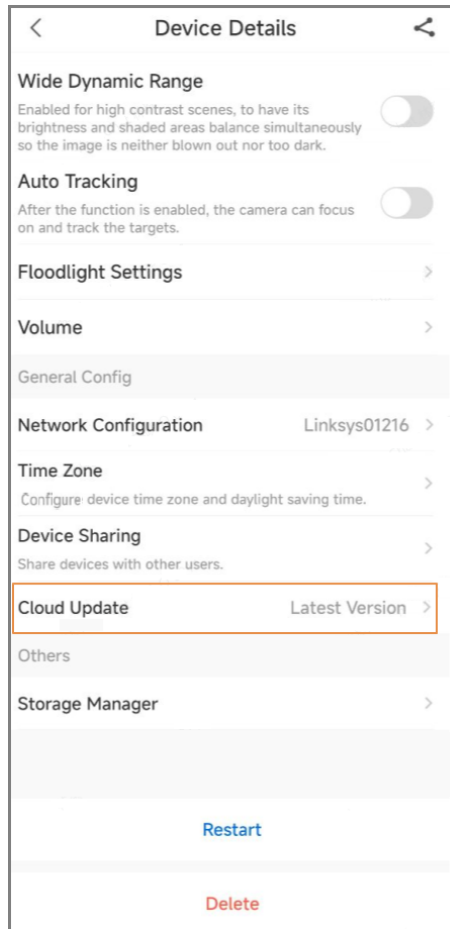


2.4.3 Checking the Result of Update through DMSS

Procedure

- Step 1 Open DMSS app.
- Step 2 Select **Device Details**.
- Step 3 Confirm that you have updated to the latest version.

Figure 2-10 Device details



ENABLING A SMARTER SOCIETY AND BETTER LIVING

ZHEJIANG DAHUA VISION TECHNOLOGY CO., LTD.

Address: No. 1399, Binxing Road, Binjiang District, Hangzhou, P. R. China | Website: www.dahuasecurity.com | Postcode: 310053

Email: dhoverseas@dhvisiontech.com | Tel: +86-571-87688888 28933188