



# **Network Video Recorder**

## **V4.002.0000000.1.R.211231**

### **Release Notes**



# Legal Information

## Copyright

© 2021 ZHEJIANG DAHUA VISION TECHNOLOGY CO., LTD. All rights reserved.

This document cannot be copied, transferred, distributed, or saved in any form without the prior written permission of Zhejiang Dahua Vision Technology Co., LTD (hereinafter referred to as "Dahua").

The products described in this document may contain the software that belongs to Dahua or the third party. Without the prior written approval of the corresponding party, any person cannot (including but not limited to) copy, distribute, amend, abstract, reverse compile, decode, reverse engineer, rent, transfer, sublicense the software.

## Trademarks

The image shows three variations of the @ahua logo: one with a red circle around the 'a', one with a black circle around the 'a', and one with the word 'TECHNOLOGY' below it. These are followed by the text ", and **HDCVI** are the trademarks or registered trademarks of Dahua."

All other company names and trademarks mentioned herein are the properties of their respective owners.

## Disclaimer

- These release notes are for reference only. Slight differences might be found between the release notes and the product.
- Succeeding products and release notes are subject to change without notice.
- If there is any uncertainty or controversy, we reserve the right of final explanation.

---

# Table of Contents

<b>Legal Information</b> .....	<b>1</b>
<b>Release Notes</b> .....	<b>1</b>
1.1 Overview .....	1
1.2 Product Introduction .....	1
1.3 New Features .....	2
1.4 Fixed Bugs.....	2
1.5 Instructions for New Features.....	2
1.5.1 Static Routing.....	2
1.5.2 Recording Time.....	3
1.5.3 Recording Duration.....	3
1.5.4 Security Baseline 2.2 (Password Management).....	4
1.5.5 Security Baseline 2.2 (Privacy Policy).....	5
1.5.6 Cloud Update on Web.....	6
1.5.7 Switch Function for Devices with PoE NIC.....	6
1.6 Compatibility .....	7
1.7 Software Environment .....	7
1.8 Pending Issues.....	10
1.9 Update Guide .....	10

# Release Notes

## 1.1 Overview

Item	Description
Product name	Network Video Recorder
Version	V4.002.0000000.1
Software package information	DH_NVR5XXX-4KS2_MultiLang_V4.002.0000000.1.R.211231.zip
Model	DHI-NVR5208-8P-4KS2E, DHI-NVR5216-16P-4KS2E, DHI-NVR5216-8P-4KS2E, DHI-NVR5232-16P-4KS2E, DHI-NVR5208-4KS2(V2.0), DHI-NVR5208-8P-4KS2(V2.0), DHI-NVR5216-4KS2(V2.0), DHI-NVR5216-8P-4KS2(V2.0), DHI-NVR5232-4KS2(V2.0), DHI-NVR5032-4KS2, DHI-NVR5064-4KS2, DHI-NVR5416-16P-4KS2E, DHI-NVR5416-4KS2(V2.0), DHI-NVR5432-16P-4KS2E, DHI-NVR5432-4KS2(V2.0), DHI-NVR5464-16P-4KS2E, DHI-NVR5464-4KS2(V2.0), DHI-NVR5816-16P-4KS2E, DHI-NVR5816-4KS2(V2.0), DHI-NVR5816-R-16P-4KS2E, DHI-NVR5816-R-4KS2, DHI-NVR5832-16P-4KS2E, DHI-NVR5832-4KS2(V2.0), DHI-NVR5832-R-16P-4KS2E, DHI-NVR5832-R-4KS2, DHI-NVR5864-16P-4KS2E, DHI-NVR5864-4KS2(V2.0), DHI-NVR5864-R-16P-4KS2E, DHI-NVR5864-R-4KS2
Onvif Version	V2.6.1
OS requirement	None
Release date	December 31, 2021

## 1.2 Product Introduction

This product is mainly used indoors. Combined with IP cameras, you can use this NVR to complete real-time monitoring and recording. It supports configuring basic parameters by using mouse, and you can build a security monitoring network through web or other professional software developed by Dahua. It supports real-time monitoring, record playback, alarm, and other auxiliary configuration functions.

## 1.3 New Features

Feature	Description
Static routing	For devices with dual network cards, the non-default network card supports automatically and manually adding devices across network segments.
Recording time	Displays recording time of NVR.
Recording duration	Supports selecting recording duration for event playback.
Security Baseline 2.2	Support Security Baseline 2.2.
Cloud update	Supports cloud update of network cameras on web client.
Switch function for devices with PoE NIC	The main NIC of NVR and the PoE NIC are connected, therefore the PoE NIC can serve as a network bridge.

## 1.4 Fixed Bugs

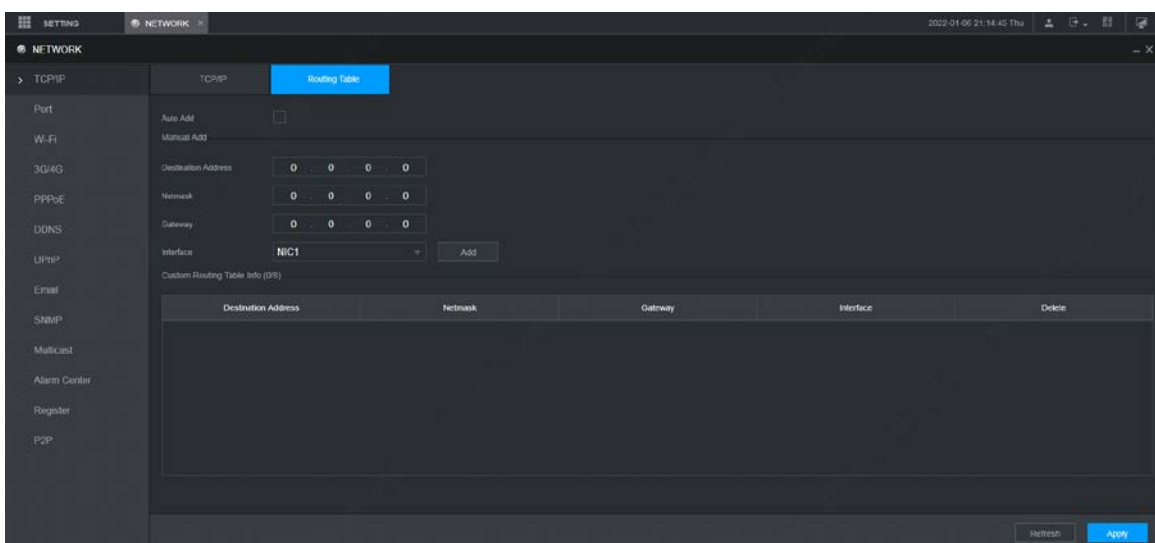
None.

## 1.5 Instructions for New Features

### 1.5.1 Static Routing

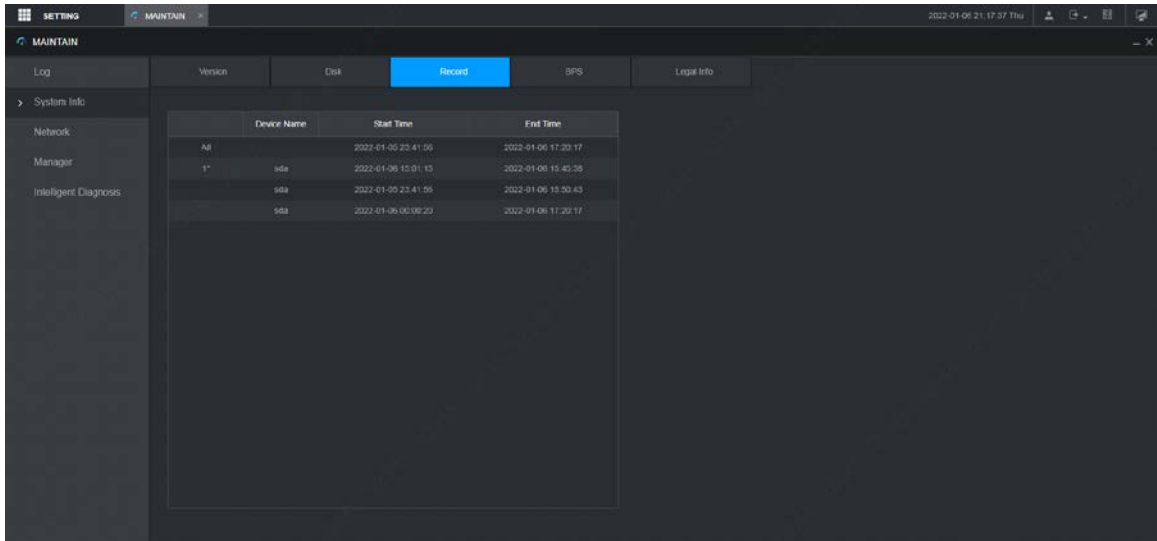
Select **NETWORK > TCP/IP > Routing Table**, and then enable **Auto Add**, when the IP address of the camera manually added is not in the routing table, the NVR automatically adds the routing information. **Auto Add** is disabled by default.

You can also manually add routing tables.



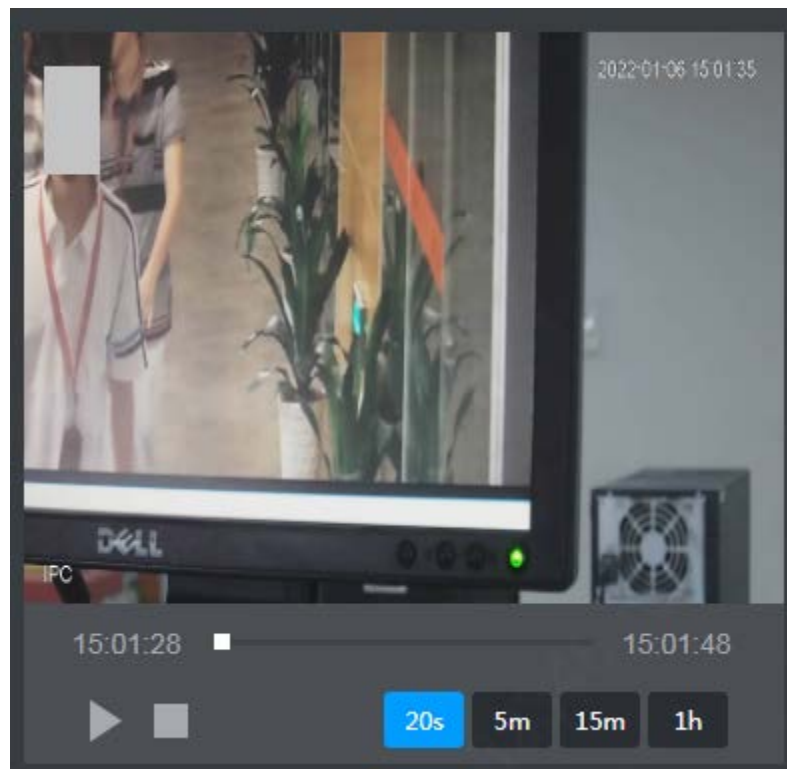
## 1.5.2 Recording Time

Select **MAINTAIN > System Info > Record**, and then you can view the start time and end time of recordings in the NVR.



## 1.5.3 Recording Duration

Select **AI > AI Search > Face Detection, IVS, or SMD**, and then click **Search** to view results. At the bottom of the play window, you can select play duration form 20 s, 5 min, 15 min, and 1 h, and then the videos of 10 s, 2.5 min, 7.5 min, and 30 min before and after the event are played respectively.



### 1.5.4 Security Baseline 2.2 (Password Management)

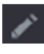
Select **ACCOUNT > User**, click  to go to the **Modify** page. You can configure password expiration time. After the password expires, a password update prompt will displayed when logging in to the device.

Figure 1-1 Select password expiration time

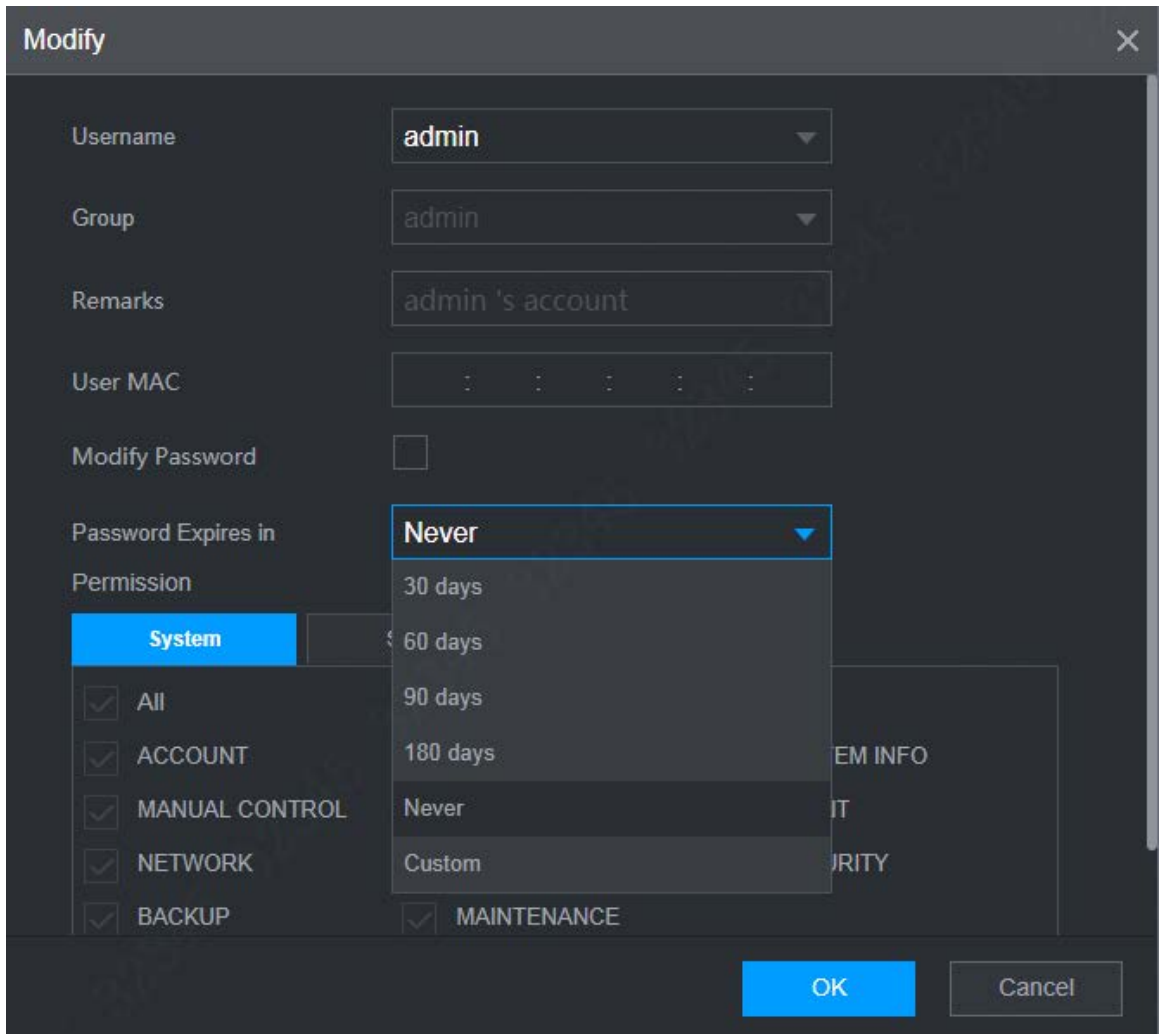
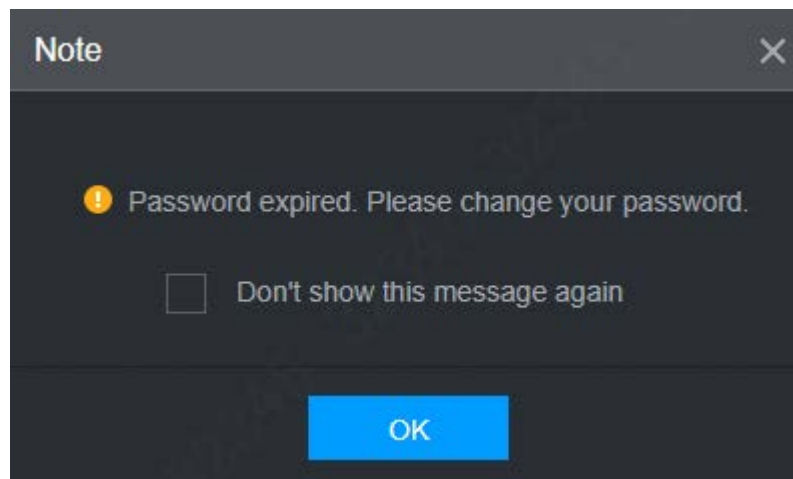


Figure 1-2 Customize password expiration time



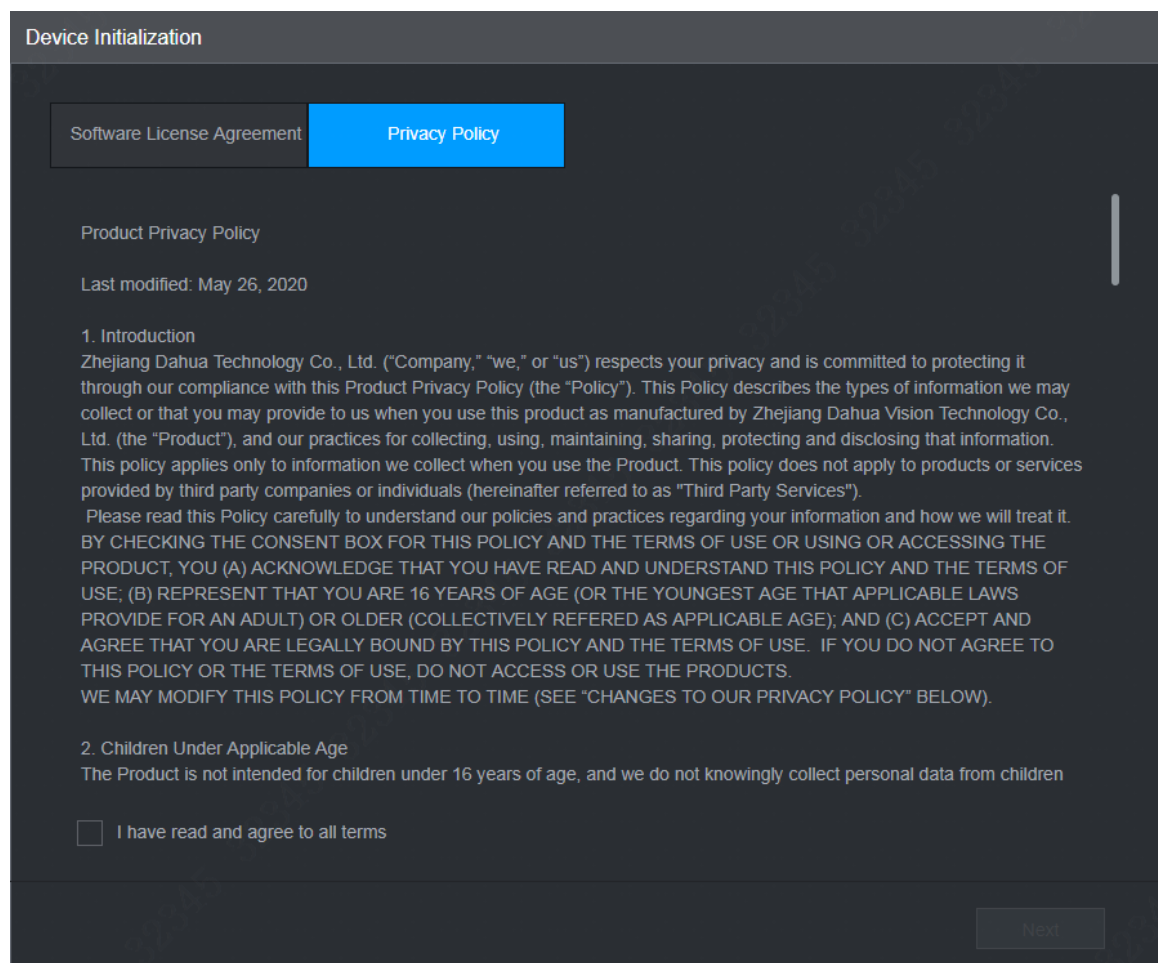
Figure 1-3 Password expiration prompt



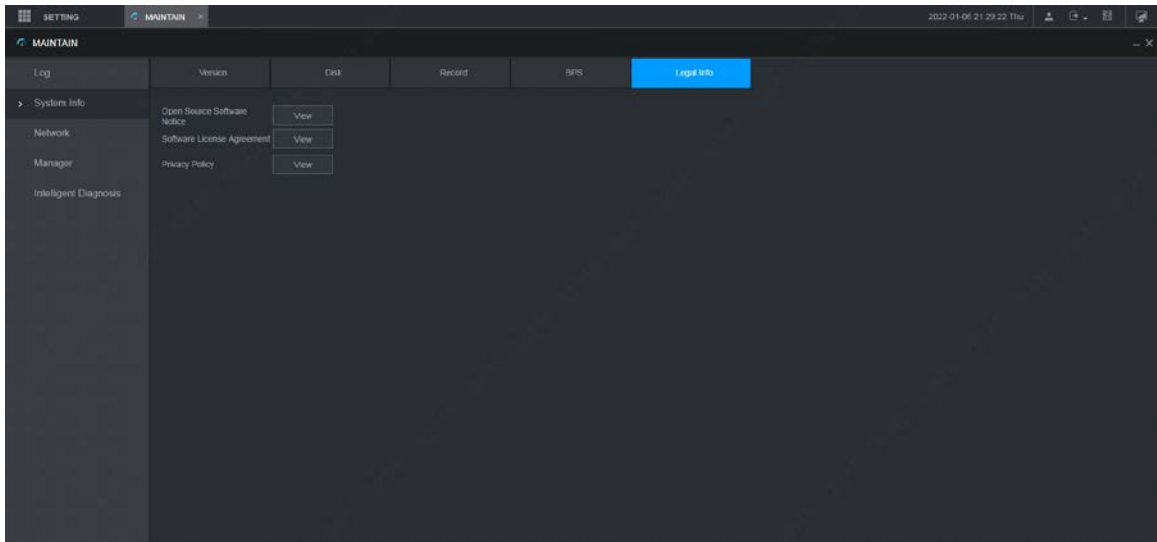
### 1.5.5 Security Baseline 2.2 (Privacy Policy)

You can view privacy policy description on the **Device Initialization** page.

You can also view software license agreement and privacy policy by selecting **MAINTAIN > System Info > Legal Info**.

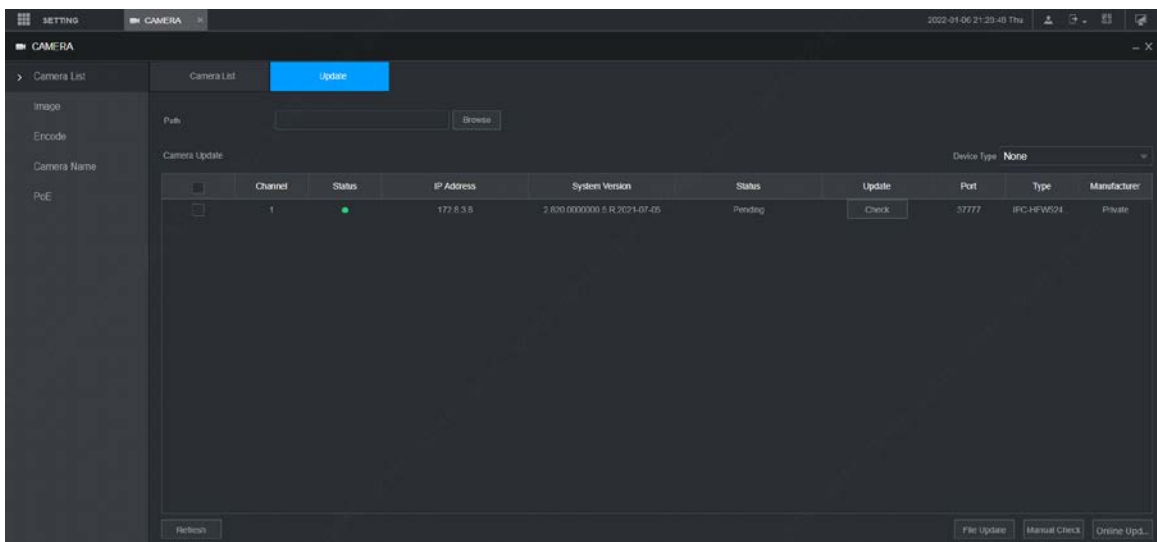






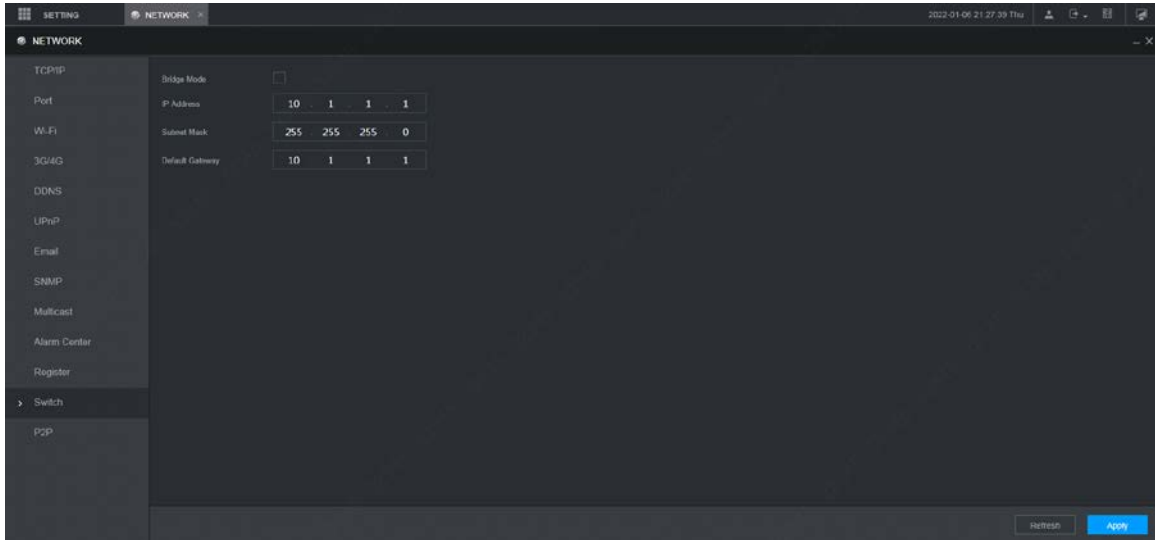
## 1.5.6 Cloud Update on Web

Select **CAMERA > Update**, and then you can perform cloud detection and cloud update for network cameras.



## 1.5.7 Switch Function for Devices with PoE NIC

Select **NETWORK > Switch**, enable **Bridge Mode**, and then the main NIC and PoE NIC are connected, which can serve as a switch.



## 1.6 Compatibility

This version is V4.002.0000000.1, and the security baseline version is 2.2. It is compatible with V4.001.0000007.1 and earlier versions.

## 1.7 Software Environment

Device Model	Software Version
DH-IPC-HFW1230M-I2-V2	2.6.01.05.27708 DH_IPC-HX2(1)XXX-Euler_Chn_PN_V2.800.0000000.4.R.201016.zip
DH-IPC-X12D-V2	2.6.01.05.27708 DH_IPC-HX2(1)XXX-Euler_Chn_PN_V2.800.0000000.4.R.201016.zip
DH-IPC-HFW1230M-A-I2-V3	2.6.01.05.27708 DH_IPC-HX2(1)XXX-Euler_Chn_PN_V2.800.0000000.4.R.201016.zip
DH-IPC-X12D-D-V3	2.6.01.05.27708 DH_IPC-HX2(1)XXX-Euler_Chn_PN_V2.800.0000000.4.R.201016.zip
DH-IPC-X12-D	2.6.01.05.24823 DH_IPC-HX2(1)XXX-Edison_Chn_PN_V2.680.0000000.16.R.200804.zip
DH-IPC-HDW1230C-A-V2	2.6.01.05.27708 DH_IPC-HX2(1)XXX-Euler_Chn_PN_V2.800.0000000.4.R.201016.zip
DH-IPC-T13-A	2.6.01.05.25150 DH_IPC-HX13XX-Edison_Chn_PN_V2.680.0000000.16.R.200804.zip
DH-IPC-HFW2130M-I1	2.6.01.05.07248 DH_IPC-HX2(1)XXX-Leto_Chn_PN_V2.680.0000000.2.R.1903

	01.zip
DH-IPC-HDW2235C-A-V2	2.6.01.05.10831 DH_IPC-HX2XXX-Eris_Chn_PN_V2.622.0000000.9.R.190713.zip
DH-IPC-HFW2233M-I1	2.6.01.05.22295 DH_IPC-HX3(2)XXX-Ohm_Chn_PN_V2.800.0000000.12.R.200522.zip
DH-IPC-HFW4243M-I1	2.6.01.05.24082 DH_IPC-HX5XXX-Volt_Chn_PN_Stream3_V2.800.0000000.19.R.200709.zip
DH-IPC-HDW4636C-A	2.6.01.05.22929 DH_IPC-HX5X3X-Rhea_Chn_PN_Stream3_V2.800.0000016.0.R.200605.zip
DH-IPC-HFW4838M-I1	2.6.01.05.18038 DH_IPC-HX5(4)XXX-Sag_Chn_PN_Stream3_V2.800.0000000.5.R.200107.zip
DH-IPC-HD4140X-E2	2.6.01.05.18040 DH_IPC-HX7XXX-Sag_Chn_PN_Stream3_V2.800.0000000.5.R.200107.zip
DH-IPC-HFW4243K-ZFD-LED	2.6.01.05.20536 DH_IPC-HX5XXX-Sag_Chn_PN_Stream3_V2.800.0000000.6.R.200409.zip
DH-IPC-HFW5233E-Z-IRA-X1-0560-D C12AC24V	2.6.01.05.22929 DH_IPC-HX5X3X-Rhea_Chn_PN_Stream3_V2.800.0000016.0.R.200605.zip
DH-IPC-HFW5233K-Z-I2-27135	2.6.01.05.22929 DH_IPC-HX5X3X-Rhea_Chn_PN_Stream3_V2.800.0000016.0.R.200605.zip
DH-IPC-HFW3233M-AS-I2-0800B	2.6.01.05.27279 DH_IPC-HX2XXX-Molec_Chn_PN_V2.800.0000000.24.R.201014.zip
DH-IPC-HDW3233C-A-0600B	2.6.01.05.27279 DH_IPC-HX2XXX-Molec_Chn_PN_V2.800.0000000.24.R.201014.zip
DH-SD-29D204UE-GN-WD	2.6.01.05.21879 DH_SD-Eos-Civil_Chn_PN_Stream3_V2.810.0000000.4.R.200509.zip 2.6.02.05.00959 General_SD29XXX-HN-V_MCU_V2.301.0000000.25.R.191224.zip
DH-SD-49D216UE-GN-D	2.6.01.05.21879 DH_SD-Eos-Civil_Chn_PN_Stream3_V2.810.0000000.4.R.200509.zip 2.6.02.05.00961 General_SD49XXX-HN-V_MCU_V2.301.0000000.25.R.19122

	4.zip
DH-SD6C82FA-GN	2.6.01.05.21874 DH_SD-Eos_Chn_PN_Stream3_V2.810.0000000.4.R.200509.zip 2.6.02.05.00963 General_SD6CXXX-GN-M_MCU_V2.301.0000000.25.R.191224.zip
DH-SD6C82FB-GN	2.6.01.05.21882 General_SD-Eos-Civil_Chn_PN_Stream3_V2.810.0000000.4.R.200509.zip 2.6.02.05.00965 General_SD6CXXX-GN-BM_MCU_V2.301.0000000.25.R.191224.zip
DH-SD-6C3230UE-HN	2.6.01.05.21874 DH_SD-Eos_Chn_PN_Stream3_V2.810.0000000.4.R.200509.zip
DH-SD6C84FX-GN-A	2.6.01.05.23291 DH_SD-Prometheus_Chn_PN_Stream3_V2.810.0000001.3.R.200608.zip
DH-SD-1A1404XB-GNR-D	2.6.01.05.23291 DH_SD-Prometheus_Chn_PN_Stream3_V2.810.0000001.3.R.200608.zip
DH-SD-8A1440WA-HNF	2.6.01.05.25344 DH_SD-Fafnir_Chn_PN_Stream3-NormalV2_V2.810.0000014.0.R.200803.zip
SmartPSS	2.7.05.01.01037 DH_SMARTPSS-Win64_Zh_IS_V2.003.0000004.0.R.201021.zip
DSS7016-S2	2.6.01.13.00174 Geeral_SMARTDSS7016_Chn_Basic_V1.003.0000001.1.R.20200911.tar.gz
H8900	2.7.01.08.07002 General_DSS-H8900_Chn_Basic_V3.001.0000004.11.R.20201113.tar.gz
C9100	2.7.01.01.00892 General_DSSC9100_MultiLang_Phoenix_V3.006.0000000.1.R.200730.tar.gz
DSSPRO	2.7.07.04.00411 General_AGS-DSSPRO_Chn_Base_PS_V2.000.0000000.3.R.20201023.tar.gz
Smartplayer	2.8.02.01.00494 General_SmartPlayer-Win32_Chn_IS_V4.001.0000001.0.R.200916.zip
CONFIG TOOL	2.8.02.01.00524 General_ConfigTool_ChnEng_V5.000.0000001.3.R.2020091

	2.zip
PlaySDK	2.8.01.01.01487 General_PlaySDK_Chn_Windows32_IS_V3.043.0000001.2.R. 200821.zip
NetSDK	2.8.01.01.01585 General_NetSDK_ChnEng_iOS_IS_V3.052.0000002.0.R.2011 03.zip
DiskManager	2.8.02.01.00430 General_DiskManager-Win32_Chn_V1.000.0000003.2.R.200 422.7z
DH-NVD0105DH-4K	2.6.02.11.00029 General_NVD0105DH-4K-MCU_V1.000.0000000.1.R.201807 28.he
DH-NVD0905DH-4K	2.1.02.01.18255 General_NVD0905DH-4K_Chn_SDA_V3.200.0000004.0.R.18 0122.BIN
NKB1000	2.6.01.09.00656 General_NKB1000_Chn_V3.621.0000000.0.R.200302.zip
NKB5000	2.6.01.09.00661 General_NKB5000_Chn_V3.212.0000001.0.R.200318.BIN

## 1.8 Pending Issues

None.

## 1.9 Update Guide

- You can upgrade the NVR by ConfigTool, web and USB flash drive. For details, see Upgrade Guide.
- Services such as recording and live view will be paused during the upgrade process. The NVR works normally after upgrade and rebooting.
- The upgrade does not affect previous settings of the NVR.
- Do not power off during the upgrade process, or the NVR will not boot up properly.

**ZHEJIANG DAHUA VISION TECHNOLOGY CO., LTD.**

Address: No.1199, Bin'an Road, Binjiang District, Hangzhou, P.R. China

Postcode: 310053

Tel: +86-571-87688883

Fax: +86-571-87688815

Email: [overseas@dahuatech.com](mailto:overseas@dahuatech.com)

Website: [www.dahuasecurity.com](http://www.dahuasecurity.com)