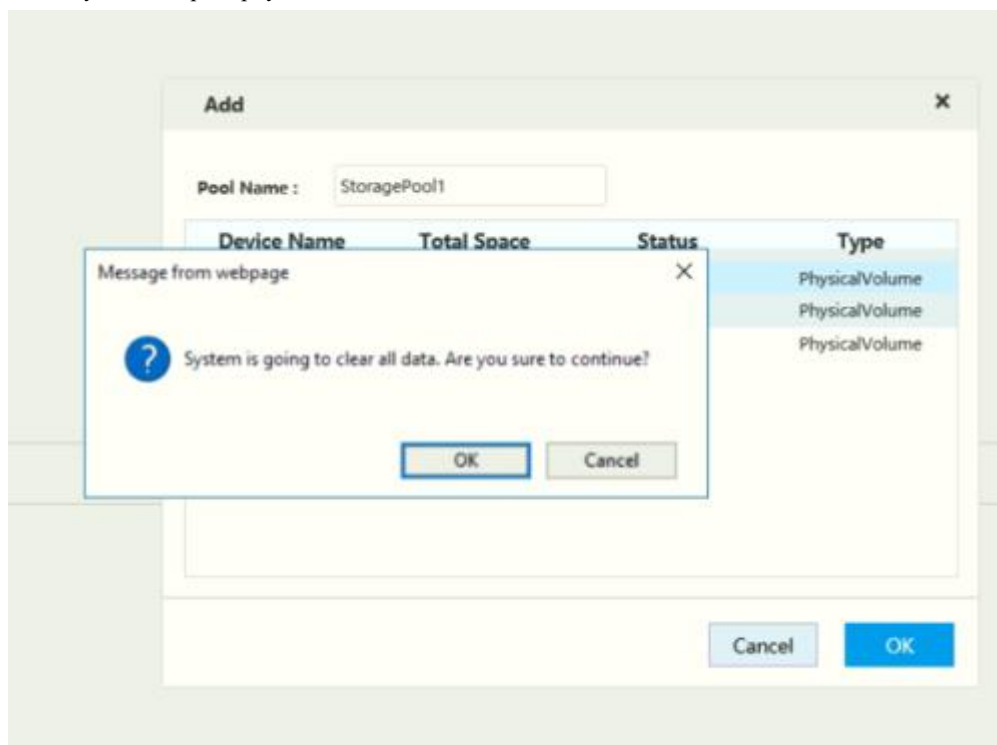


4. The system will prompt you that all data in the HDD will be formatted, click OK to continue.



5. Your Storage Pool is now created. Repeat step #2 if you have multiple RAID Array or disk for your EVS.



6. Go to **Share Account** menu and then click on **Add**.



7. Enter Username and Password you wish to create for your Storage allocation, then click **OK**.

Add User ✕

User Name

Server Type

Password

Confirm Password

Memo

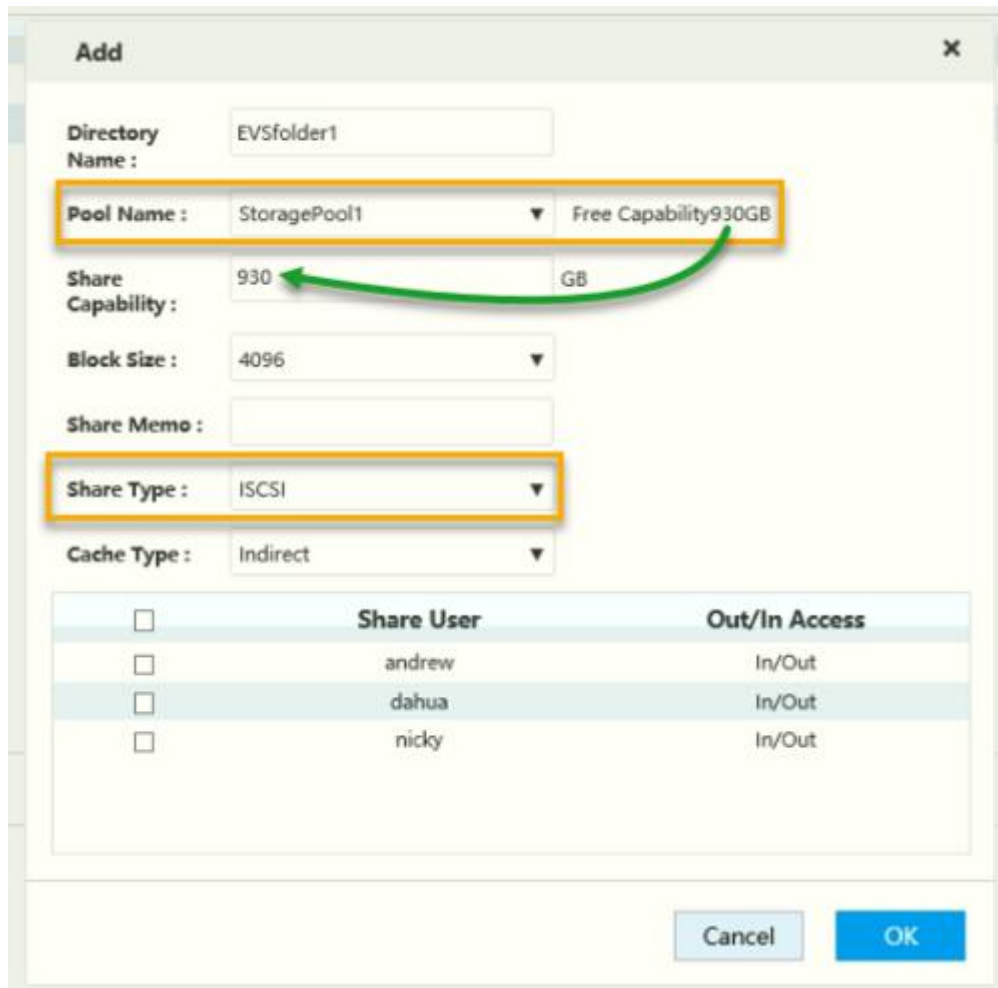
8. Your Share Account is now created.



9. Go to **Share Folder** menu and then click on **Add**.



10. Enter the Directory Name, and then select your storage pool that created on step 2. Choose Share Type to ISCSI, and do not select any share user. Then, click **OK**.



11. Your share folder is now created. Repeat step #10 if you have multiple storage pool created for your EVS.



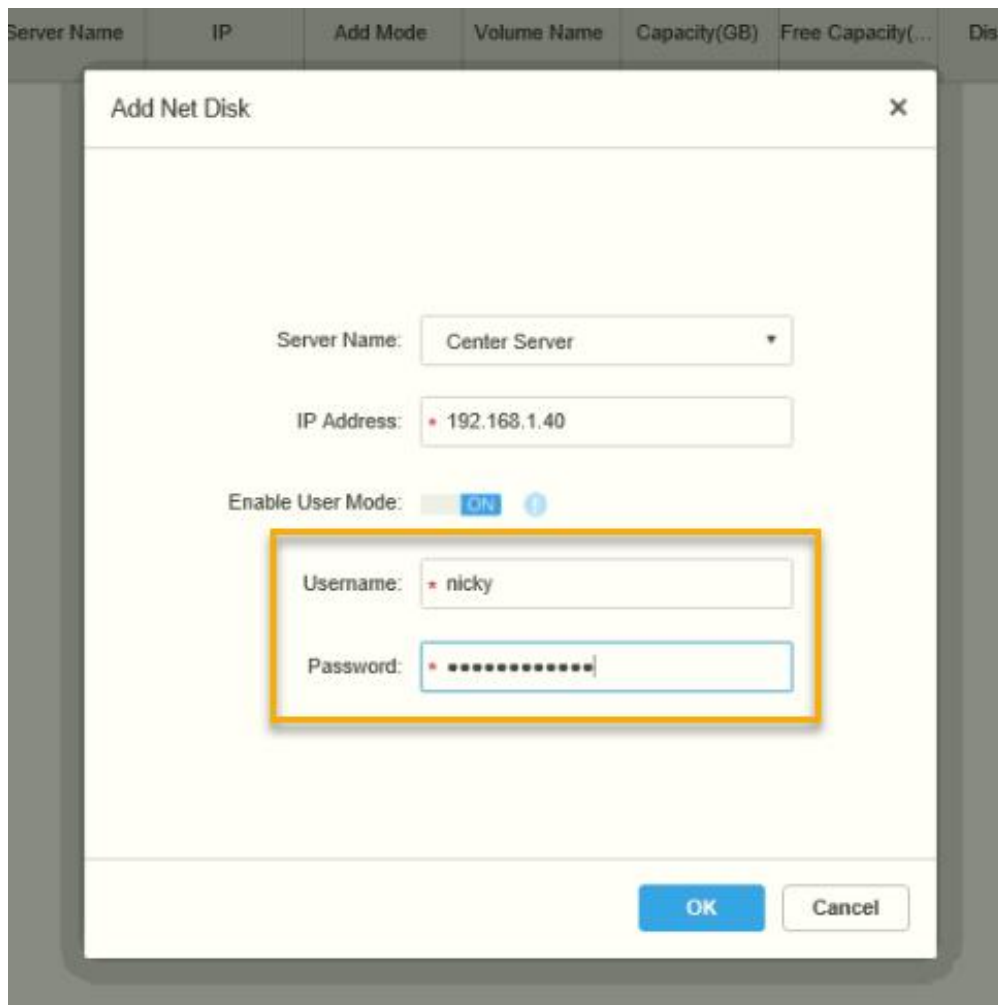
12. Your EVS is now ready to be added to DSS.

13. Login to DSS Web Manager, and go to Storage.

14. Go to **Storage Config** and click on **Add**.

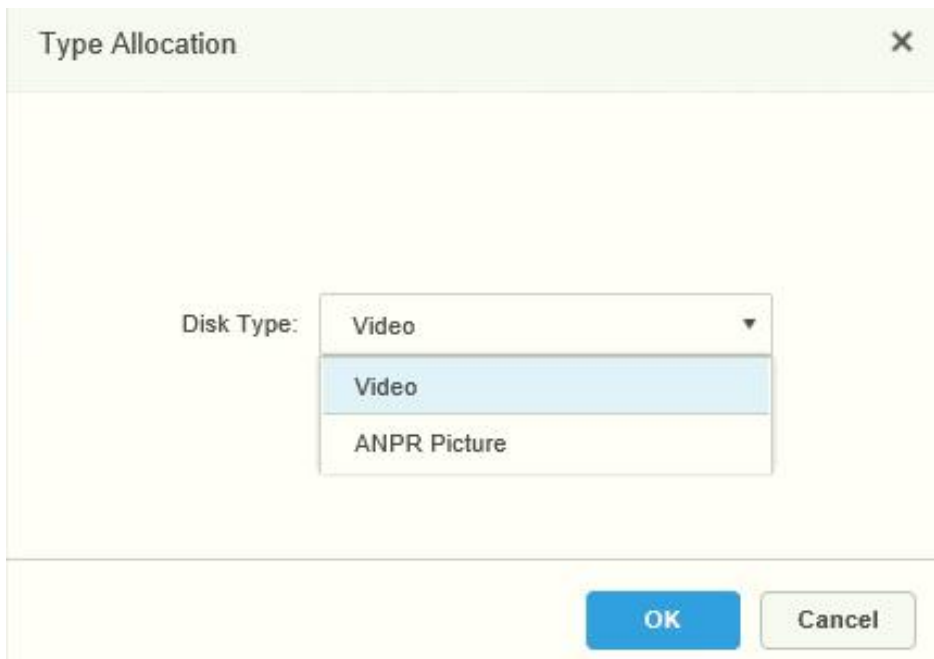
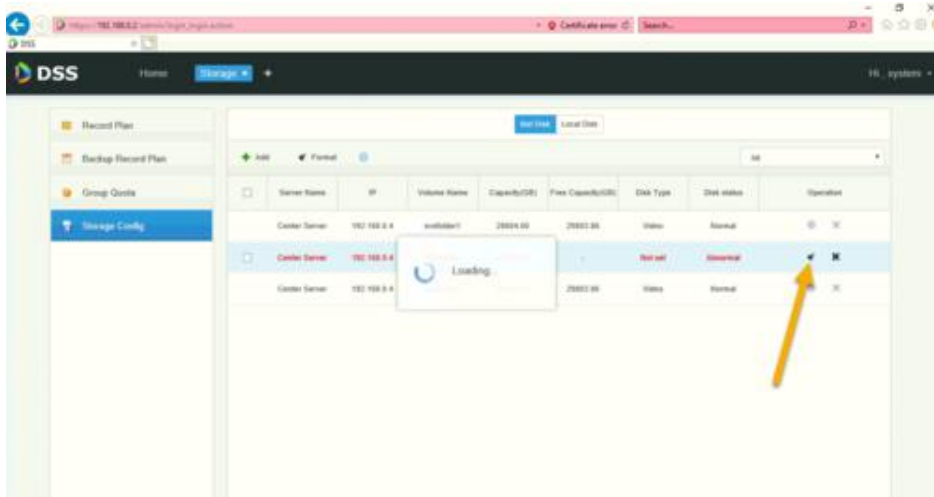


15. Enter EVS IP Address and username and password that created under Share Account in EVS (Step #7). Click OK.



16. DSS will retrieve all existing storage pool that created in EVS. Click on the brush icon to to format and initialize the HDD in DSS. You will be asked whether you want to set this storage pool for video recording or ANPR Picture.

If you have multiple storage pool, you must click format on each storage pool.



17. Once HDD is formatted, the storage pool status will show Normal, and this is ready to use.

