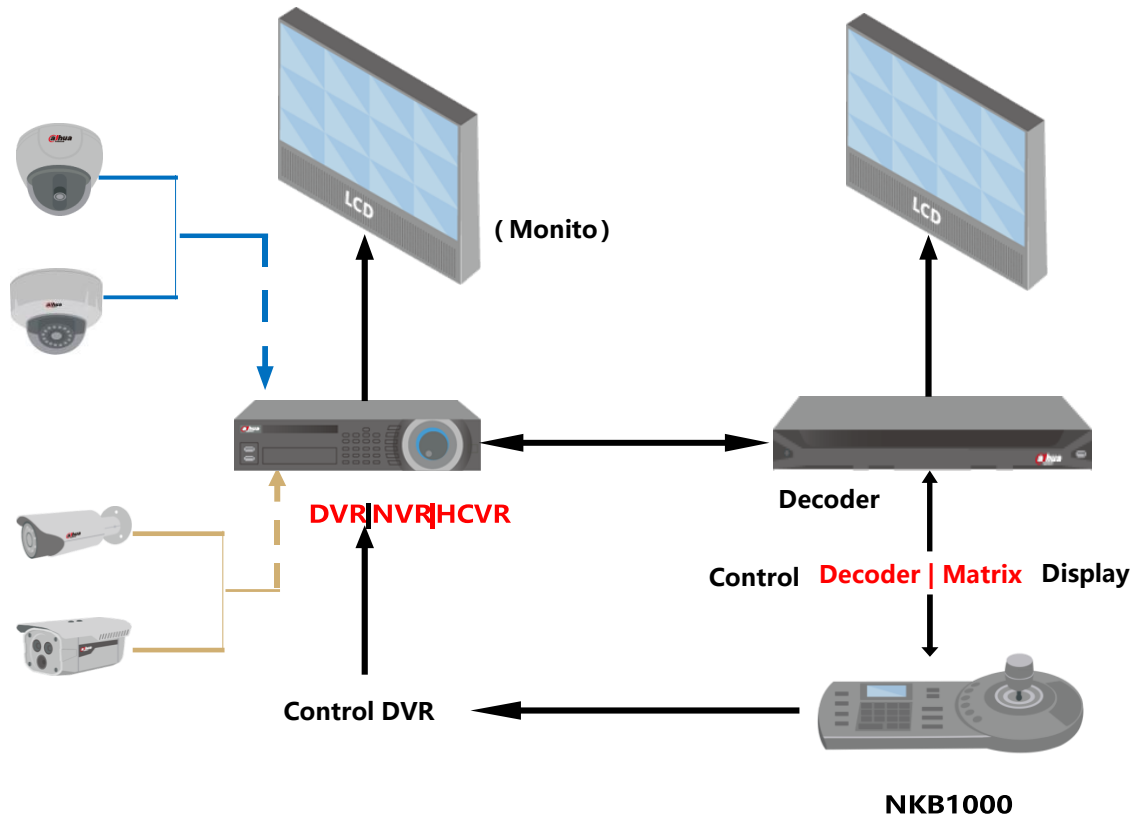


## 一、 NKB1000 Control Decoder NVD

### 1. Topology



### 2. Decoder Operation

(Support NVS0104/0404/0904/1604DH, NVS0104DH-4K,

NVD0405DH-4K)

**Step 1:** Login in decoder web, Click the **[Splicing Screens]** button.

**Important**

The splicing video wall (display pane) can be used as one physical TV screen. It can share the device on the device tree and supports monitor enable/disable function. It does not support channel map and playback function.

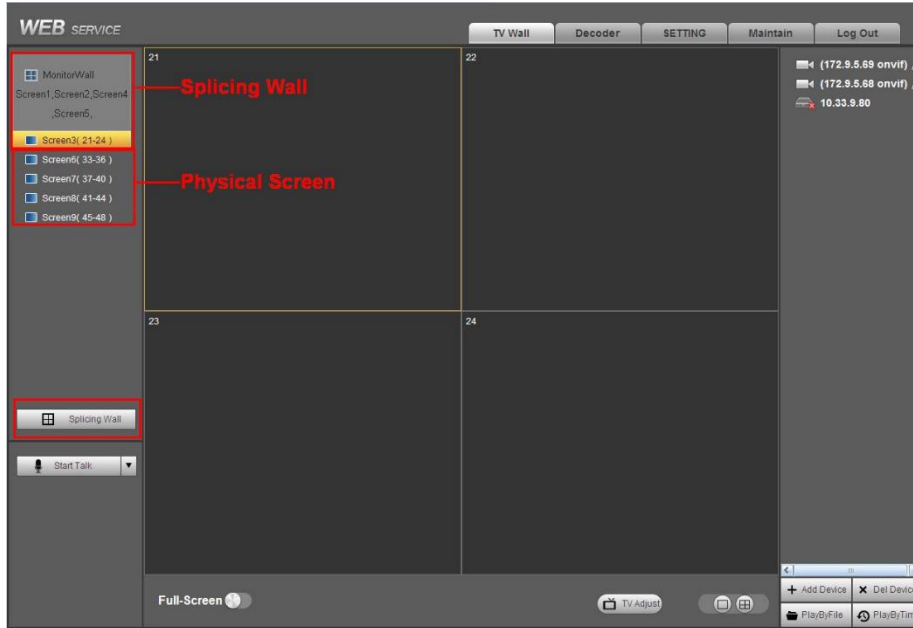



Figure 1

Please follow the contents below for a splicing video wall setup.

### Step 1

In the main interface, click the Splice button  Splicing Wall on the left pane; you can see system pops up the following interface. See Figure 2.

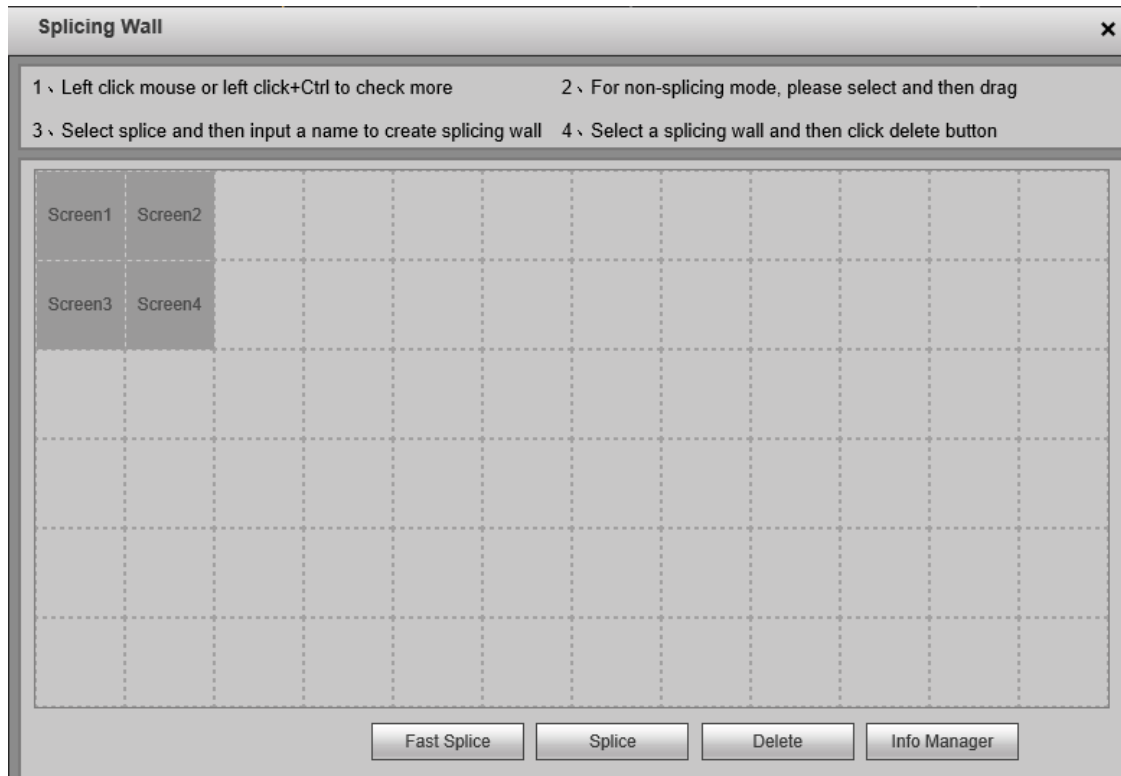


Figure 2

## Step 2

Select screens. See Figure 0.

- Left click mouse to select one.
- Left click mouse +Ctrl button to select more screens.

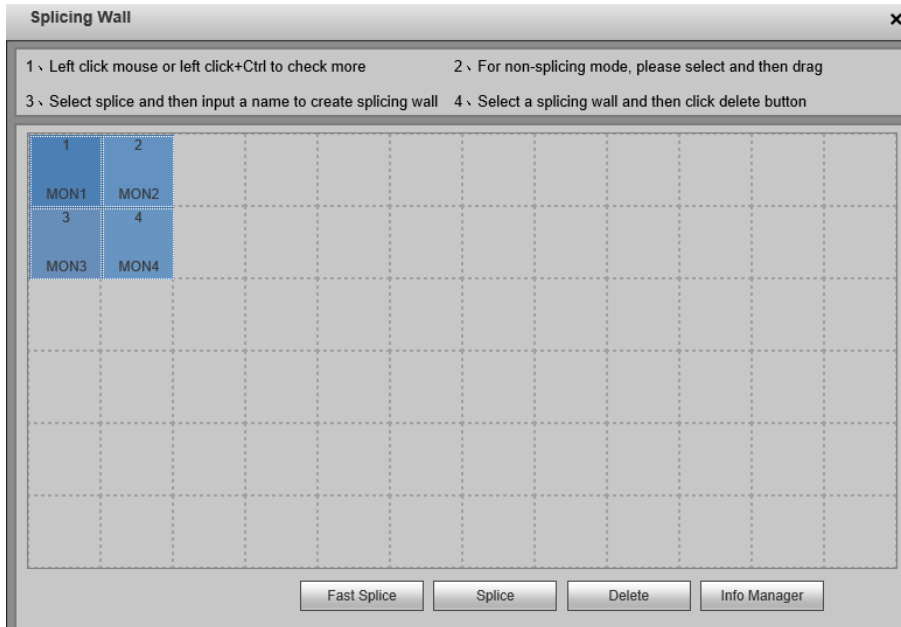



Figure 0

**Step 3**

Click  button, you can see an interface shown as in Figure 4.

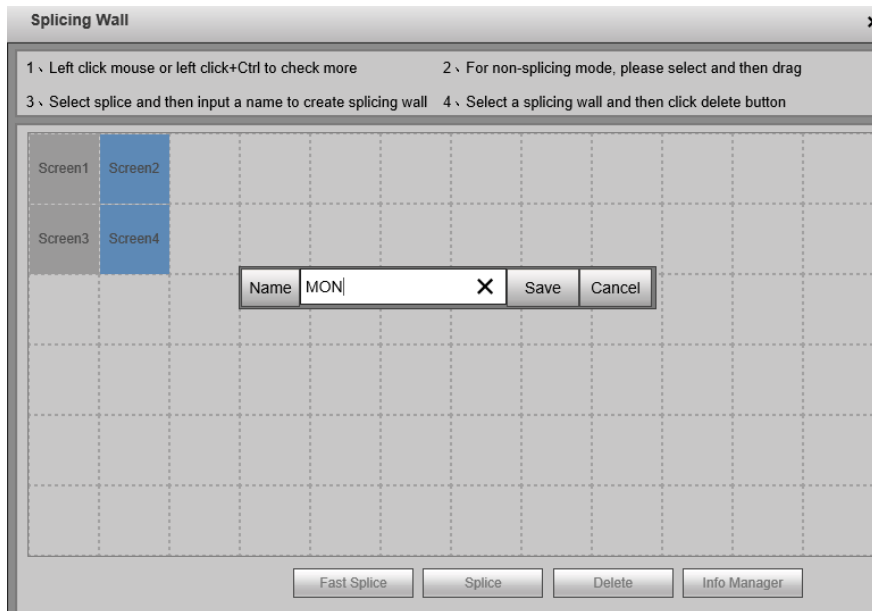


Figure 4

**Step 4**

In Figure 4, you can input customized splicing wall name. Click Save button to save current setup.



**Step 5**

Now you can close splicing wall interface and then go back to the main interface. The splicing wall can be used as a physical screen. It supports 1/4/9/16 split, add/delete device, open/close all-channel monitor.

**Note**

The general operation is the same as the physical screen. But for the splicing wall, there is no playback function and you cannot control the corresponding physical screens of the splicing wall.

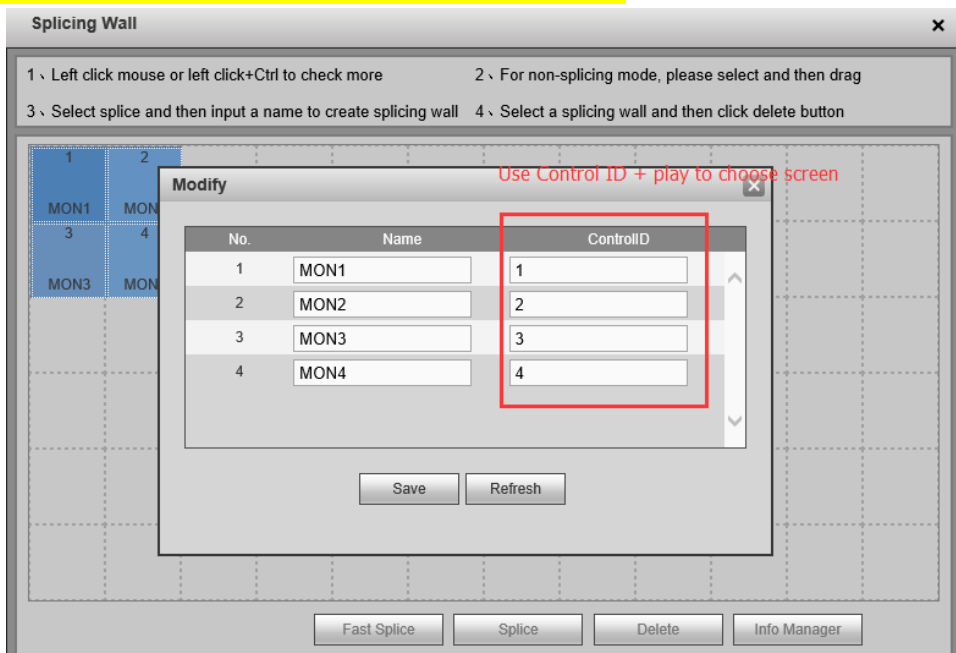
**Cancel splicing wall**

In the main interface, click the Splice button  Splicing Wall on the left pane; you can go to Figure 2. Select a splicing wall first and then click  button, you can remove the selected splicing wall.

**Note**

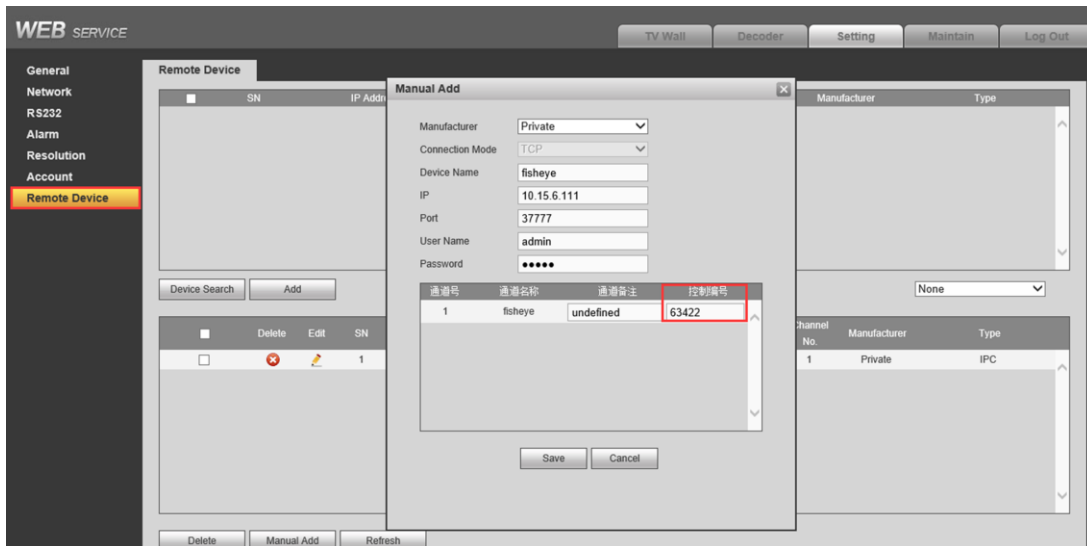
The corresponding physical screens are off after you created a splicing wall. After you delete the splicing wall, the corresponding physical screens are off too.

**Tips:** Click **Info Manager**, check and edit corresponding screen Control ID ( **The Control ID would be adopted for network keyboard** )

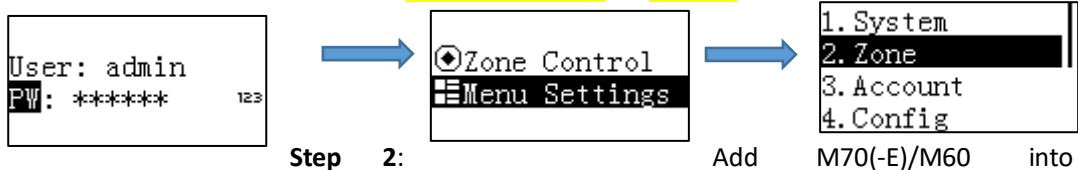


**Step 3. Setting → Remote Device**

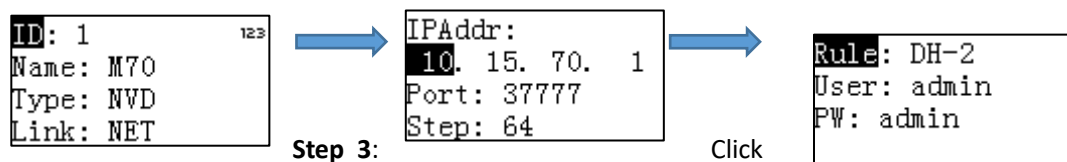
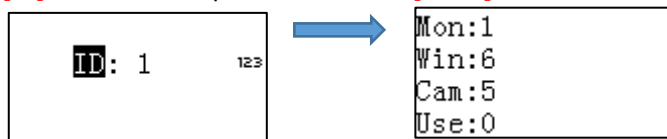
To add input channels and set Control ID for them.



### 3. NKB1000 Operation(Default PW 888888)

**Step**
**A. NKB1000 Operation**
**Step 1:** Login in NKB1000, and click **[Menu Setting]** --> **[Zone]**


NKB1000 via NVD type.


**[ID]** button, and input M70 ID, Click **[Enter]** button, connect M70 via net.

**Step 4:** Operation:

- Num + [PLAY]: choose the screen
- Num + [MULT]: set the split mode
- Num + [PTZ]: choose the specific window
- Num + [CAM]: choose the specific channel and display on the window and if this is a SD

channel, then you can control the PTZ function via the joystick of keyboard.

### Key Corresponding List

Function list	The Example	The sample function
Choose output screen	5+ PLAY(screen)	Choose No.5 output screen
Choose split mode	4+ MULT(split)	Change current screen to 4 split
Choose window	2+ PTZ (window)	Choose No.2 window in current screen
Choose input channel	4+ CAM(channel)	Display No.4 channel on current window <b>Tips:</b> 0+CAM to close the channel in current window
Prior channel	SHIFT (switch)	Channel -1
Next channel	ENTER(ensure)	Channel+1
Clear one digit	Esc(exit)	Clear one digit that you just input
Mode switch	SETUP(set)	Operation   Edit mode(Use Num + Preset to set preset)
Main   Sub stream set	1+ SETUP	Choose stream type for display on the screen.
Clear input zone	OTHER(SD menu)	Press OTHER to clear input zone under operation mode
Auxiliary function	AUX	0+AUX, execute tour for all screens (Open & Close) 1+AUX, execute tour for current screen (Open & Close) 2+AUX, open all channels image 3+AUX, close all channels image
Maximize one window	4+ FN	Switch to focus on No.4 window and maximize it to display full screen
Restore the full screen widow	0+ FN(or FN)	Restore the full screen widow to original status
Disconnect	ID	
SD menu	OTHER	Press OTHER under edit mode
Preset	PRESET	Press Num+PRESET to call preset under operation mode; Press Num+PRESET to call preset under edit mode
Scan	SCAN	
Pan	PAN	
Tour	TOUR	
Pattern	PATTERN	



## 二、NKB1000 控制解码器 NVD 操作说明

R&D: 周峰 2 671513

分类说明：操作步骤-绿色框 注意点-紫色框 特殊功能-棕色框

键盘 NKB1000（其他型号不支持）——主要控制解码器和 DVR|NVR|CVR、IPC、球机等设备。

现场接线方案图如下：

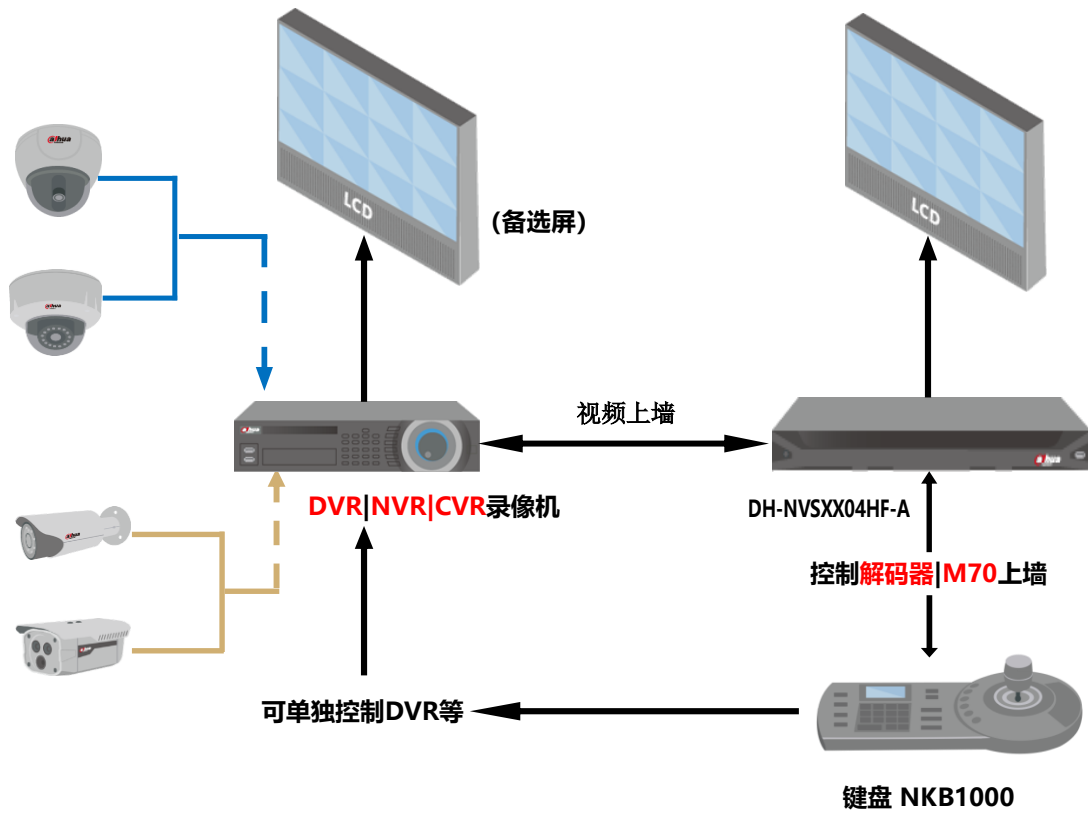
以下方案适合于大交通、交警、公安、平安城市、智能楼宇、文教卫、政企、金融、司法等各大行业线、事业部。特别适用于海外低成本方案。

（中小型方案对成本关注较高的，推荐 NKB1000，大中型项目推荐 NKB300）



## 1、拓扑图

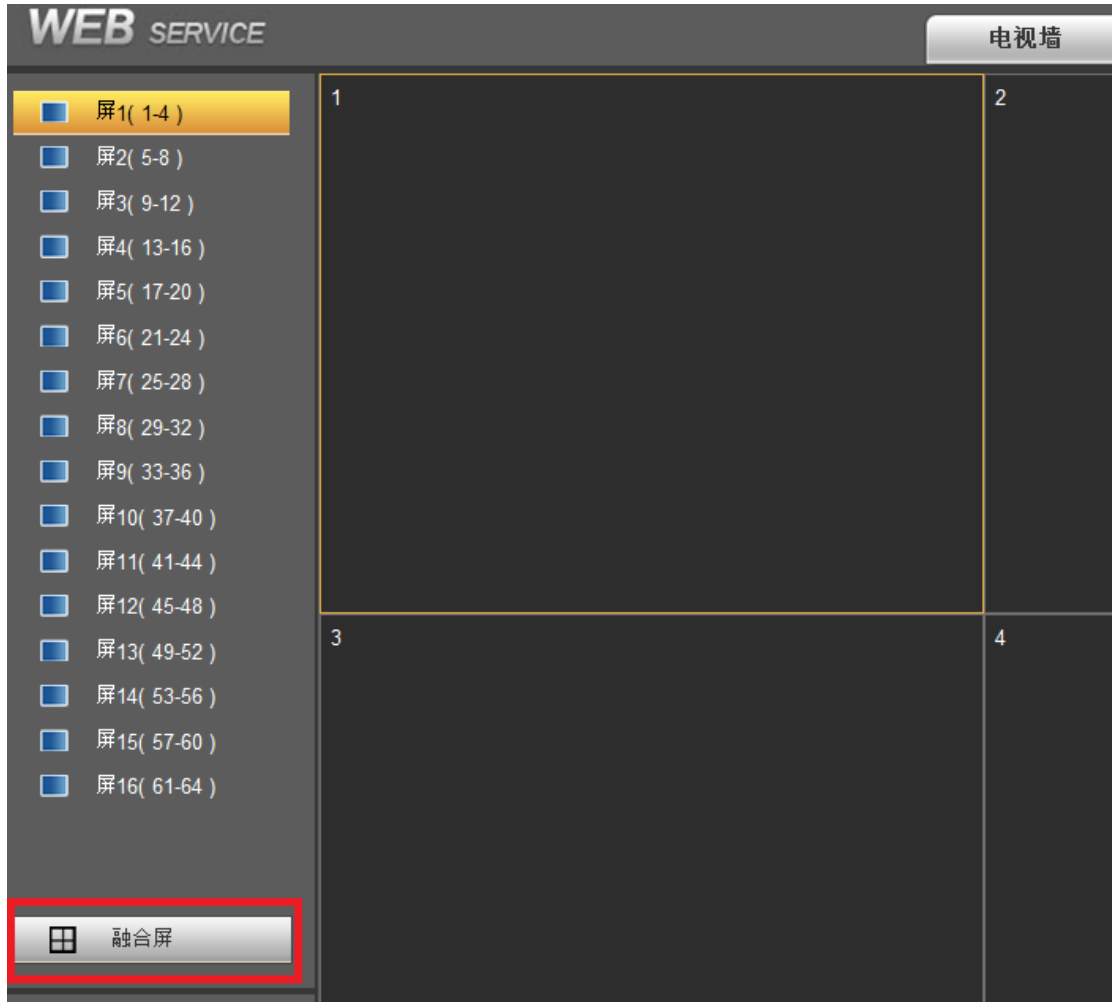
网络键盘NKB1000控制解码设备上墙



## 2、解码器端相关操作

**(支持 4\9\16 全系列) (程序联系周阳 662700)**

**步骤 1**：登陆解码器 web, 点击下图**融合屏**按钮。



**注**: 现场环境有平台的话就**不要**执行**步骤 2**, 从平台添加解码器 (需要勾选支持融合屏)



**解码器只有融合屏模式支持网络键盘 NKB1000。**

**步骤 2**：点击**快速融合**按钮, 可实现对解码器的快速 1\*1 配置。

**【技巧】**解码器同时支持 2\*2 等多屏融合, 操作如下: 先快速融合, 再把需要的几个删除, 融合成融合屏。

### 融合屏配置

1、鼠标左键框选或者左键+Ctrl多选  
2、没融合状态下，选中后可以整体拖  
3、点击融合，输入名称，生成融合屏  
4、删除融合屏，只要选中，点击删除

1 MON1	5 MON5	9 MON9	13 MON13	<b>融合后为蓝色</b>	
2 MON2	6 MON6	10 MON10	14 MON14		
3 MON3	7 MON7	屏11	屏15		<b>点击删除按钮后为灰色。</b> <b>4个可以单独融合成2*2融合屏</b>
4 MON4	8 MON8	屏12	屏16		

快速融合    **融合**    删除

**注**：点击**信息管理**，可查看和编辑相应的屏幕控制编号。（编号后续键盘控制时用到）



**步骤 3:** 系统设置 → 远程设备, 添加相应的输入源, 点击下图编辑 (红框) 按钮, 可相应通道的控制编号。(编号后续键盘控制时用到)



### 3、键盘 NKB1000 端相关操作

(默认密码 888888)

步骤 4: 菜单选项 → 控点设置 (按下图从前到后操作)

⓪控点操作 ☰菜单选项	1. 系统管理 2. 控点设置 3. 用户管理 4. 配置管理	ID号: *1 设备名: 1 类型: NVD 连接: NET
控点IP: 172. 9. 5. 41 端口: 37777 步长: 64	协议: DH-2 用户: admin 密码: admin	

注: 设备类型选择 NVD, 步长 64。(另外 DVM 代表 M6070 设备)。

步骤 5: 控点查找

ID号: 1	屏幕:1 窗口:3 通道:2 0
--------	---------------------------

#### 键值对应表

功能清单	示例按键	示例功能
选择输出屏	5+ PLAY (屏)	选择编号为 5 的输出屏幕;
选择分割数	4+MULT (分割)	对当前屏幕 4 分割
选择 2 号窗口	2+PTZ (窗)	选择当前屏幕的第 2 个窗口
选择输入源	4+ CAM (通道)	上墙编号为 4 的输入源 注: 0+CAM 为关闭当前窗口视频源
前一视频源	SHIFT (切换)	输入源-1
后一视频源	ENTER (确认)	输入源+1
清除一位	ESC (退出)	
模式切换	SETUP (设置)	操作模式 编辑模式 (可数字+Preset 设置预置点)

主 辅码流设置	1+SETUP	选择解码器等上墙的码流
清空输入区	OTHER(球机菜单)	在操作模式下，按 OTHER 键清空
辅助功能	AUX	0+AUX，执行所有屏轮巡（开&关） 1+AUX，执行当前屏轮巡（开&关） 2+AUX，打开所有视频源； 3+AUX，关闭所有视频源
第 4 窗口最大化	4+FN 或者	切换聚焦窗口并放大 4 窗口到全屏
窗口最大化还原	0+FN (直接 FN)	窗口最大化还原
断开连接	ID	
球机菜单	OTHER	编辑模式下，按 OTHER 键有效
预置点	PRESET	操作模式下 12+PRESET，调用预置点 12； 编辑模式下 12+PRESET，设置预置点 12；
线扫	SCAN	
水平旋转	PAN	
巡航	TOUR	
巡迹	PATTERN	

