

# Fast operation of IP Apartment System

2017.8

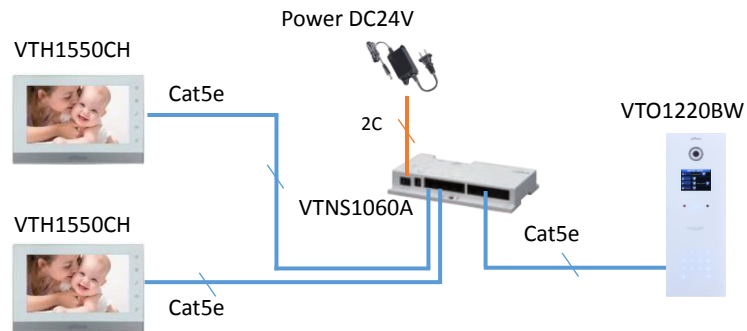
# Content

<b>1. System Structure .....</b>	<b>3</b>
1.1 Topology .....	3
1.2 Demo environment .....	3
1.3 Firmware and software .....	4
<b>2. How to configure: 1 VTO + m VTH.....</b>	<b>5</b>
1.1 How to setup the VTO .....	5
1.2 How to setup the master VTH .....	7
1.3 How to setup the extension VTH .....	9
1.4 Check result.....	10
<b>3. How to add IPC.....</b>	<b>12</b>
3.1 How to add public IPC .....	12
3.2 How to add privacy IPC .....	13
3.3 Check result.....	15
<b>4. How to issue card .....</b>	<b>17</b>
4.1 How to issue card on VTO web interface .....	17
4.2 Locally issue card.....	18
4.3 Check result.....	21
<b>5. How to configure: SmartPSS.....</b>	<b>22</b>
5.1 How to register to the platform .....	22
9.2 Check result.....	24
<b>6. How to add address book in VTH.....</b>	<b>25</b>

## 1. System Structure

This document listed the involved firmware and software, and explained the configuration of IP apartment solution, including the VTO, VTH, IP Camera and IP switch.

### 1.1 Topology





**Note:** VTH1550CH can be powered by VTNS1060A. Moreover, it can be powered individually with 12V/1A if you use other IP switch.

### 1.2 Demo environment



### 1.3 Firmware and software

VTO1220BW	<b>General_VTOXXX_Eng_P_16M_V3.120.0000.0.R.20170803</b> Device1 IP: 192.168.1.110 Building No: 01 Unit No: 1 VTO NO: 6901	VT cybersecurity baseline
VTH1550CH	<b>General_VTH151X_Eng_P_V4.000.0000.0.R.20170803</b> Device IP: 192.168.1.106 Room NO: 101	VT cybersecurity baseline V4.0 indicates NEW UI
VTO1550CH	<b>General_VTH151X_Eng_P_V4.000.0000.0.R.20170803</b> Device IP: 192.168.1.108 Room No: 101-1	VT cybersecurity baseline
IPC-HDW1220SN	Software Version: 2.420.0000.14.R, build : 2016-04-18 IP: 192.168.1.107	
IE 11	 Internet Explorer <sup>11</sup> Version :11.0.9600.18762	
Chrome	 Google Chrome Version: 60.0.3122.113( 64 bit)	
Windows 7	Windows 7 Enterprise edition	

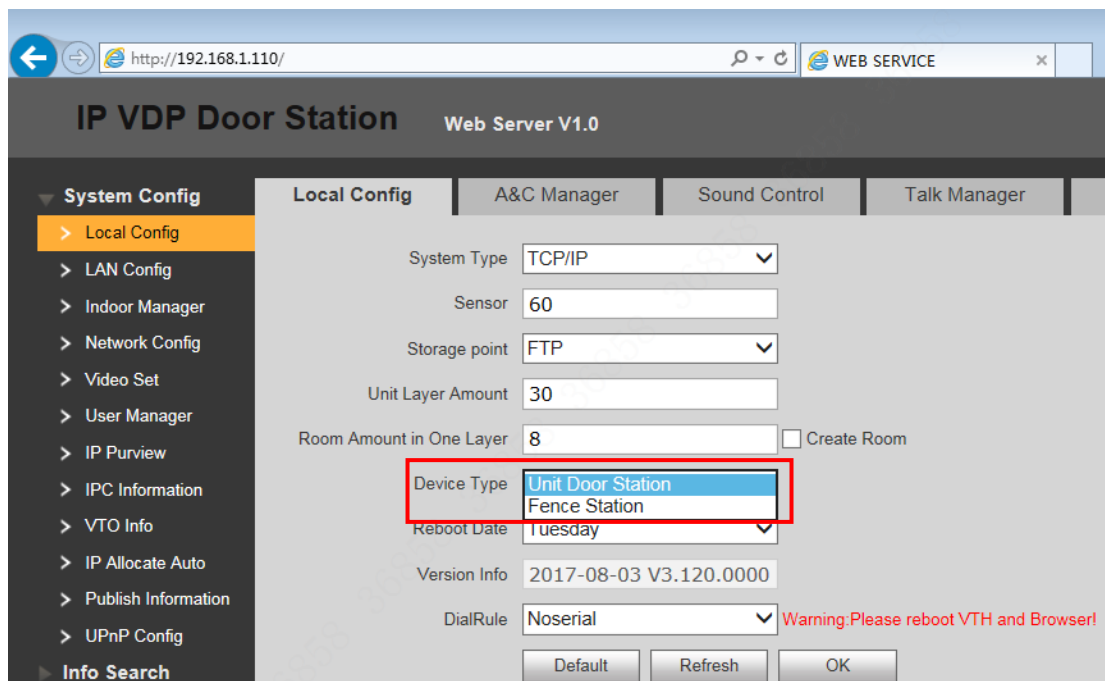
## 2. How to configure: 1 VTO + m VTH

**Note:** When you want to connect the devices, please make sure the IP address of VTO and VTH are in the same network segment.

If there are more than 2 VTHs, you can set group call function of VDP. **Maximum support for 5 VTH.**

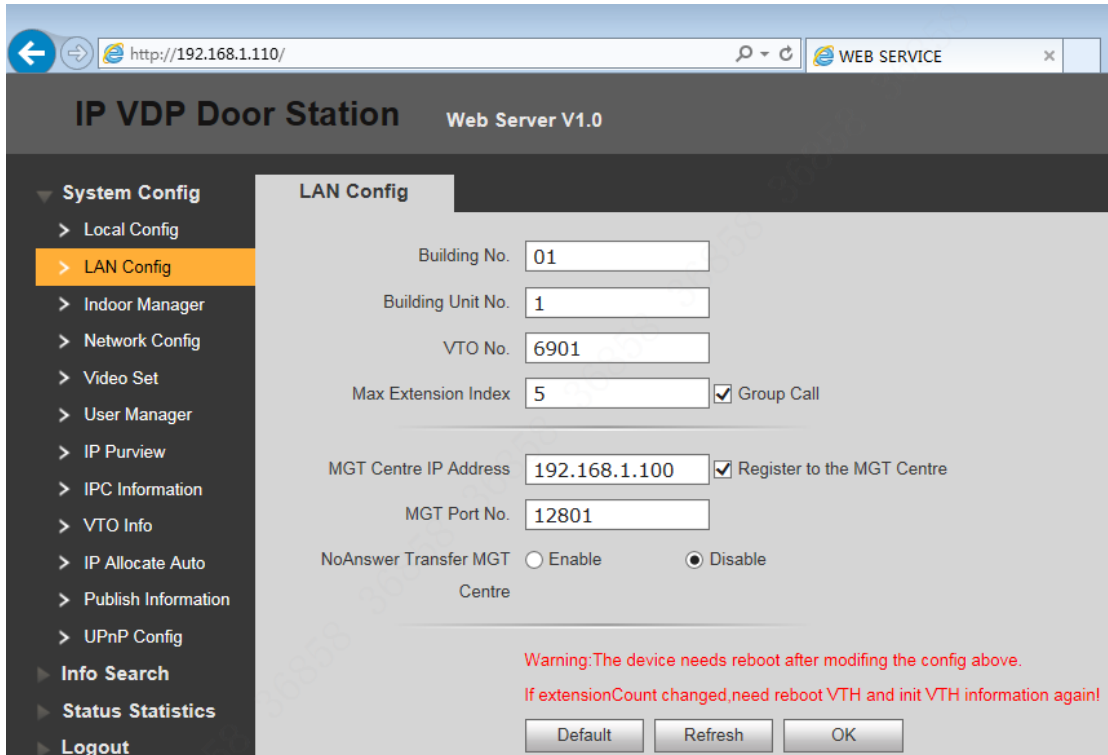
### 1.1 How to setup the VTO

Step 1 Login VTO1220BW web interface <http://192.168.1.110>, system Config -> Local Config, set 'Device Type' as 'Unit Door Station'.

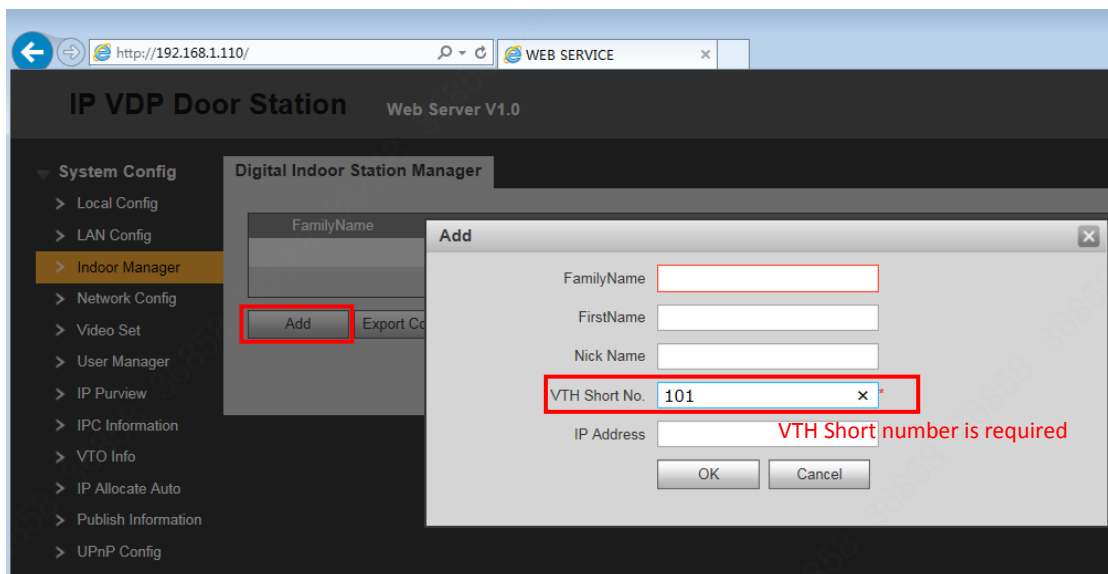


Step 2 Check LAN Config, make sure to tick the 'Group Call', and click OK to save.

**Note:** if you have the MGT center, you can configure the MGT information (for more details, see chapter 5); if not, keep default.



Step 3 System Config -> Indoor Manager, click on 'Add'. You need to input room number of VTH in the 'VTH Short NO', such as 101.



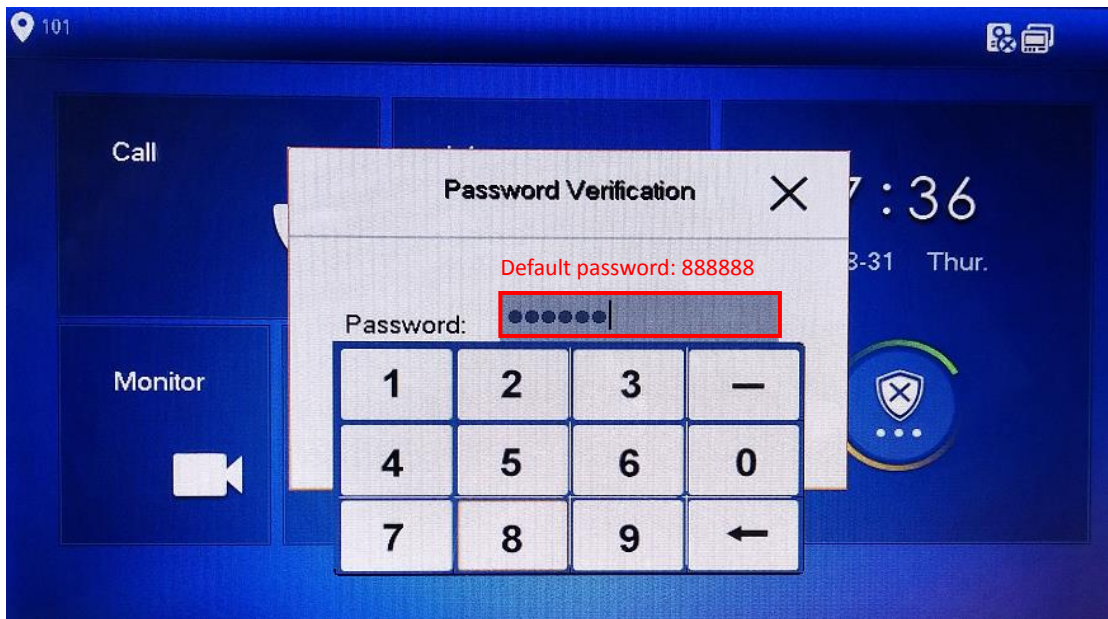
Step 4 Reboot the device.



## 1.2 How to setup the master VTH

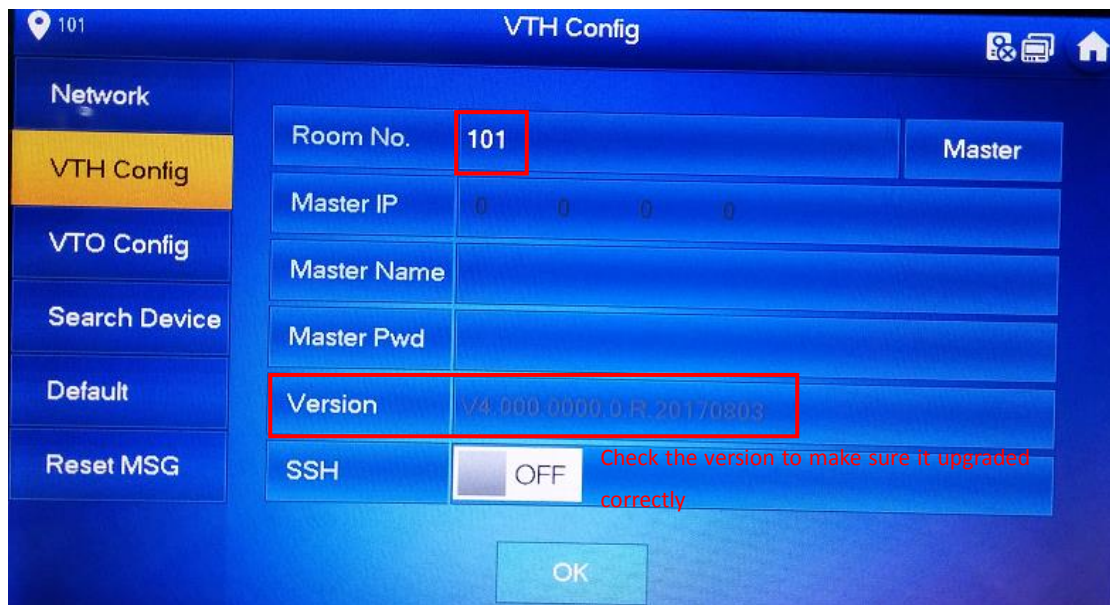
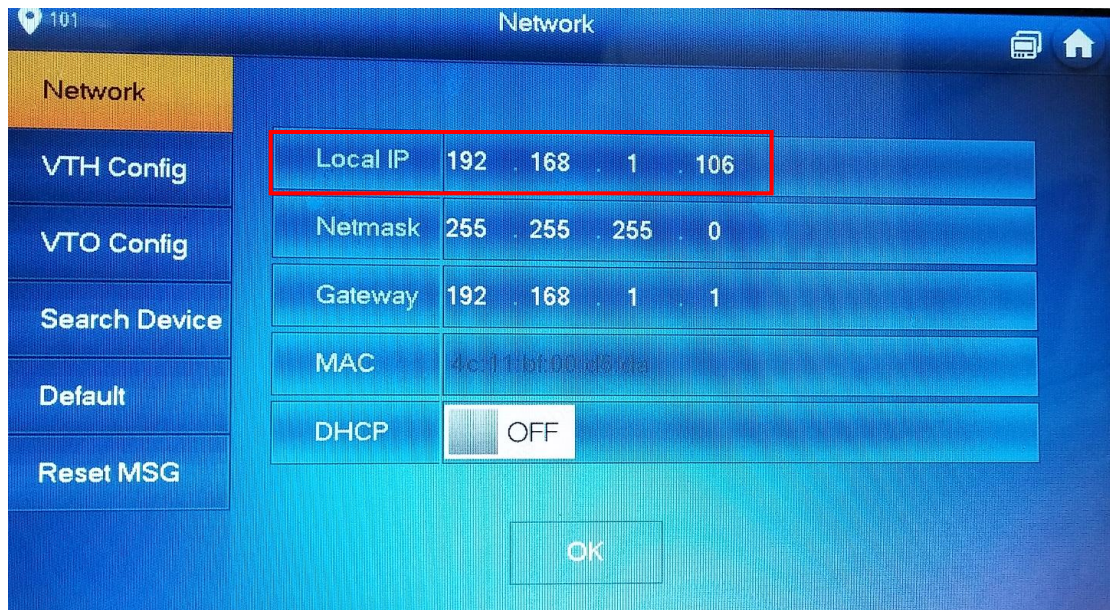
**Note:** maximum support 5 VTH (1 main VTH and 4 extension VTH). The master VTH's room number is set as 101, and extension VTH's room number should set as 101-1,101-2,101-3,101-4.

Step 1 long press the 'setting' icon (for about 6 seconds) -> password verification (default password is 888888). Then enter to project setting.



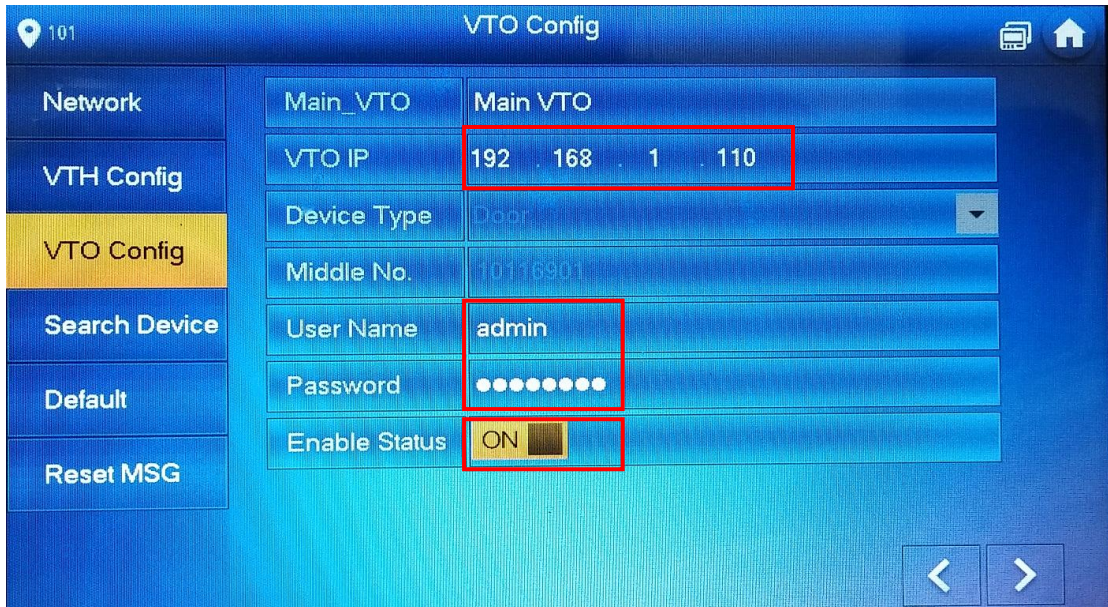
Step 2 Check 'Network', setup the IP of VTH. Check 'VTH Config', set Room number of VTH, it should be the same with the VTH Short number in VTO web setting.





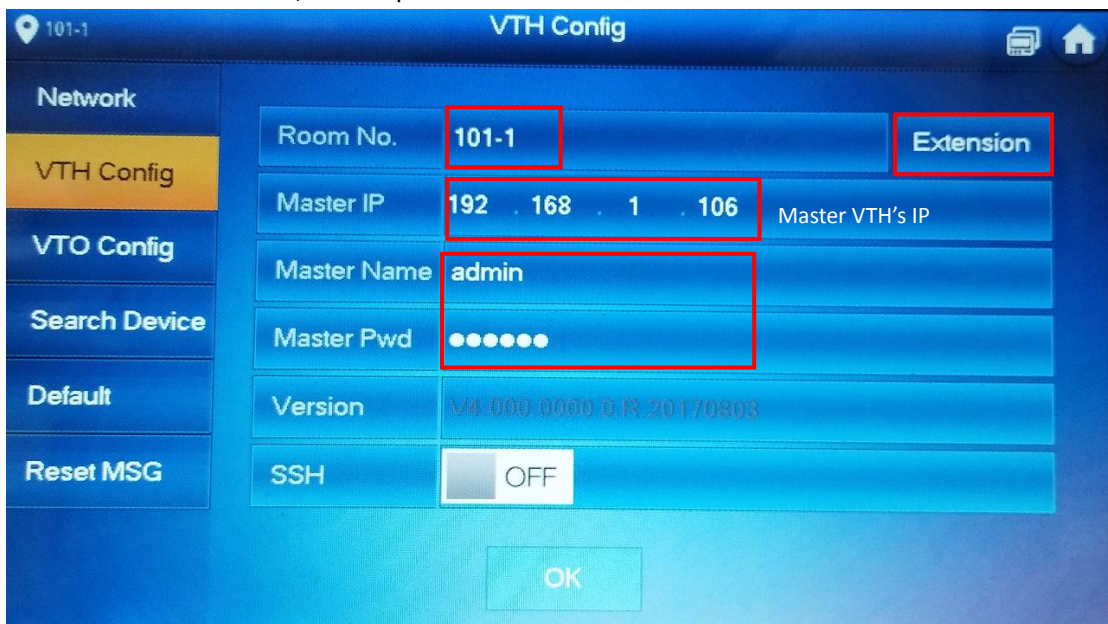
Step 3 Add VTO1220BW in 'VTO Config', setup the IP address, username and password of VTO, and enable it. The username and password are the VTO web interface login 'Username' and 'Password'.





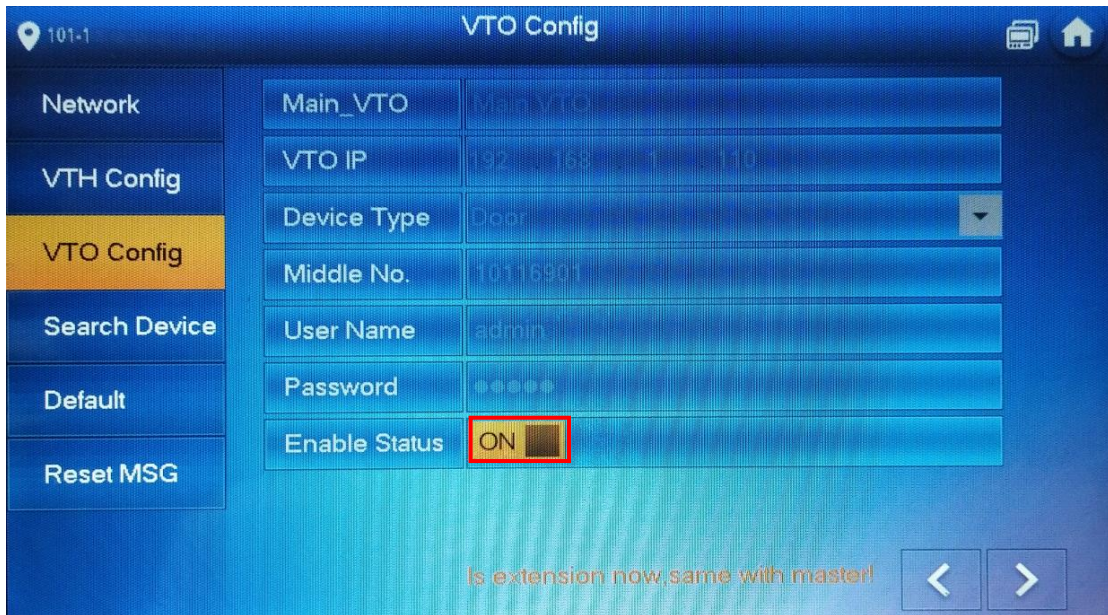
### 1.3 How to setup the extension VTH

Step 1 Setup extension VTH's room number in 'VTH Config', press 'Master' and switch to 'Extension'. Set the room number as 101-1, and input the master VTH's IP, master name: admin, master pwd: 888888.



Step 2 After setting up, the VTO information of master VTH has been synchronized to extension VTH, and then enable it.





#### 1.4 Check result

After the above operation steps, if the top right corner of VTH shows an icon with 'X'

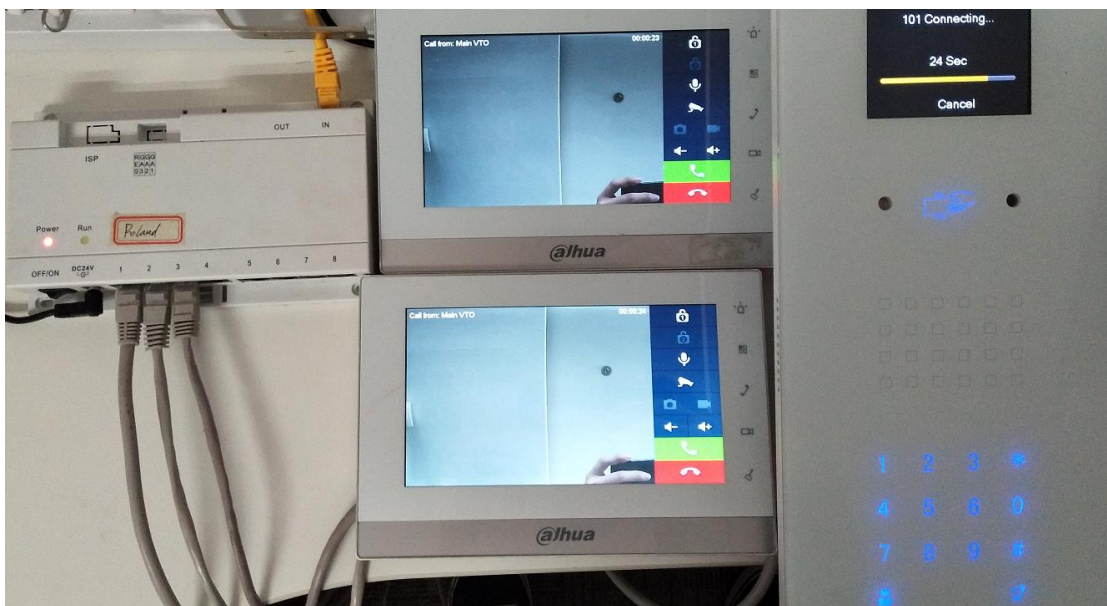
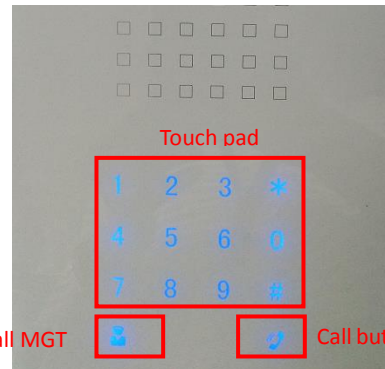


, means configuration failed. If shows



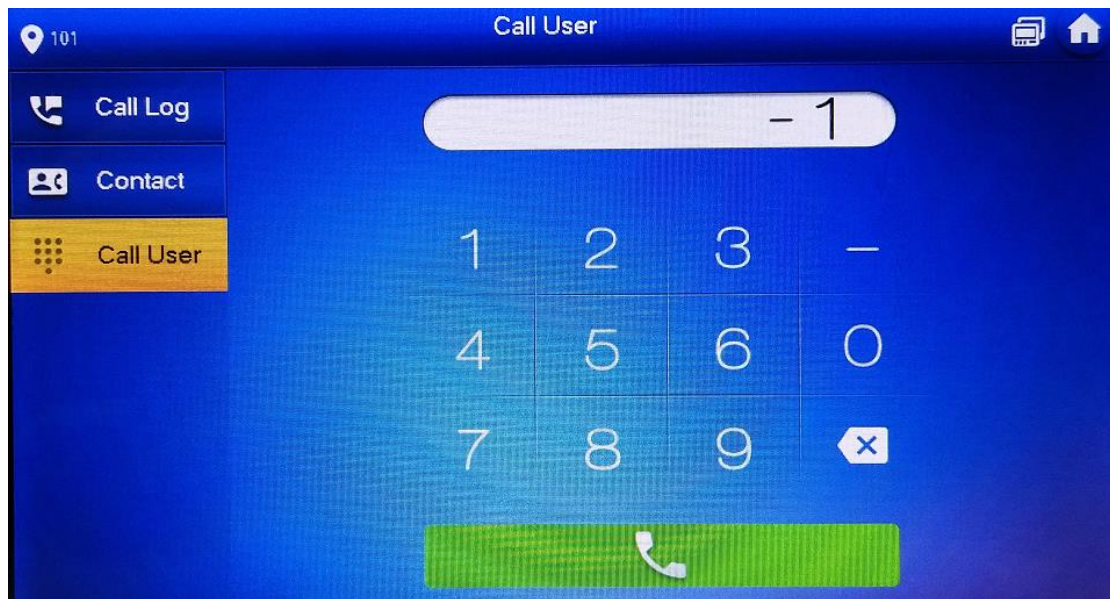
, it means successfully.

Input the room number '101' on the touch pad of VTO1220BW and press the call button.



➤ **Master VTH calls extension VTH**

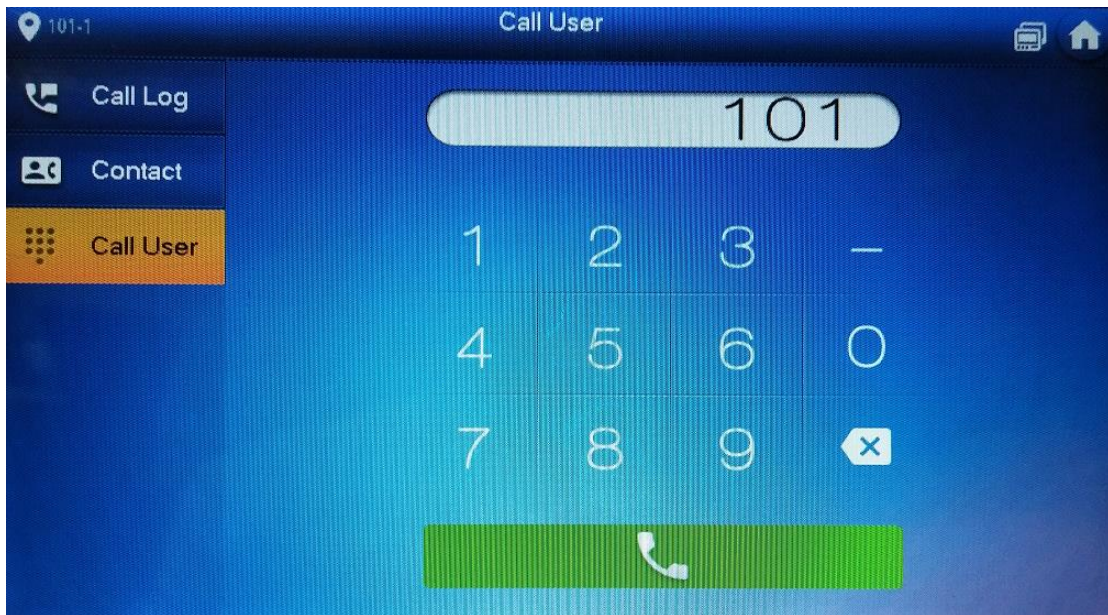
Call -> Call User, input '-1', and press the call button.



➤ **Extension VTH calls master VTH**

Call -> Call User, input room number '101', and press the call button.





### 3. How to add IPC

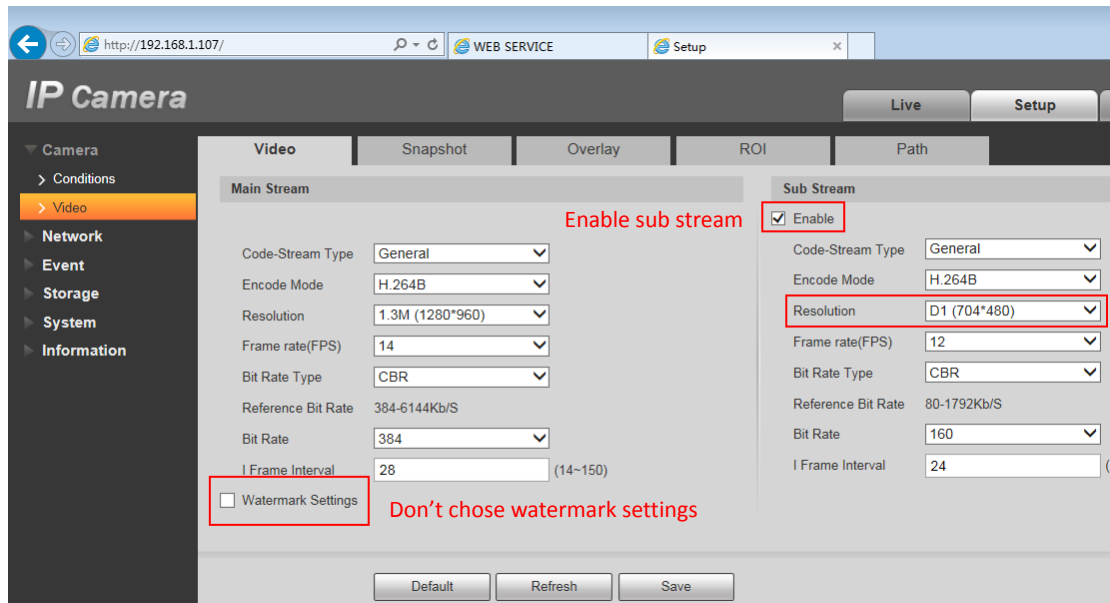
There are two different ways to add IPC: add IPC at VTO web interface (24ch) or add IPC at VTH (8ch). If you add IPC at VTO web interface, all the VTHs added on the VTO can monitor the IPC. If you add IPC at one VTH, only this VTH can monitor the IPC.

#### 3.1 How to add public IPC

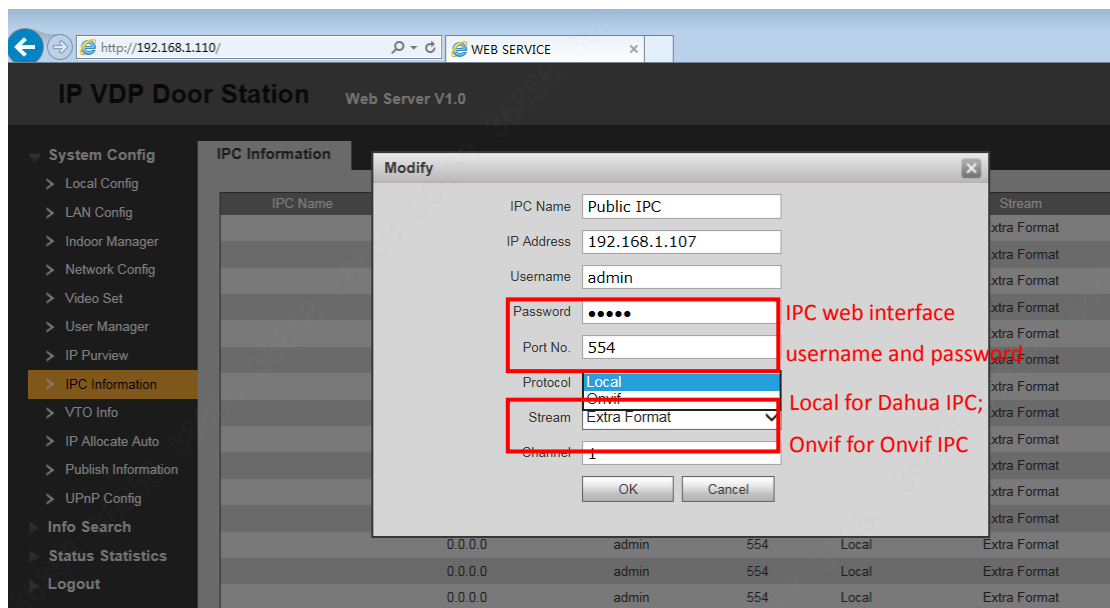
Step 1 Login IPC web interface <http://192.168.1.107> , Setup -> Camera -> Video.

**Note:** For cybersecurity baseline, VTH monitor support both main stream and sub stream of IPC (Resolution below 720P, H.265 is not supported). Sub stream is recommended.

**Don't select watermark settings.**



- Step 2 Login in VTO web interface <http://192.168.1.110> , System Config -> IPC Information, click 'Modify' icon to add IPC.
- Step 3 Setup IPC name, IP, Username and Password.
- Step 4 Select the protocol: Local for Dahua IPC and Onvif for Onvif IPC. Other information keep default.

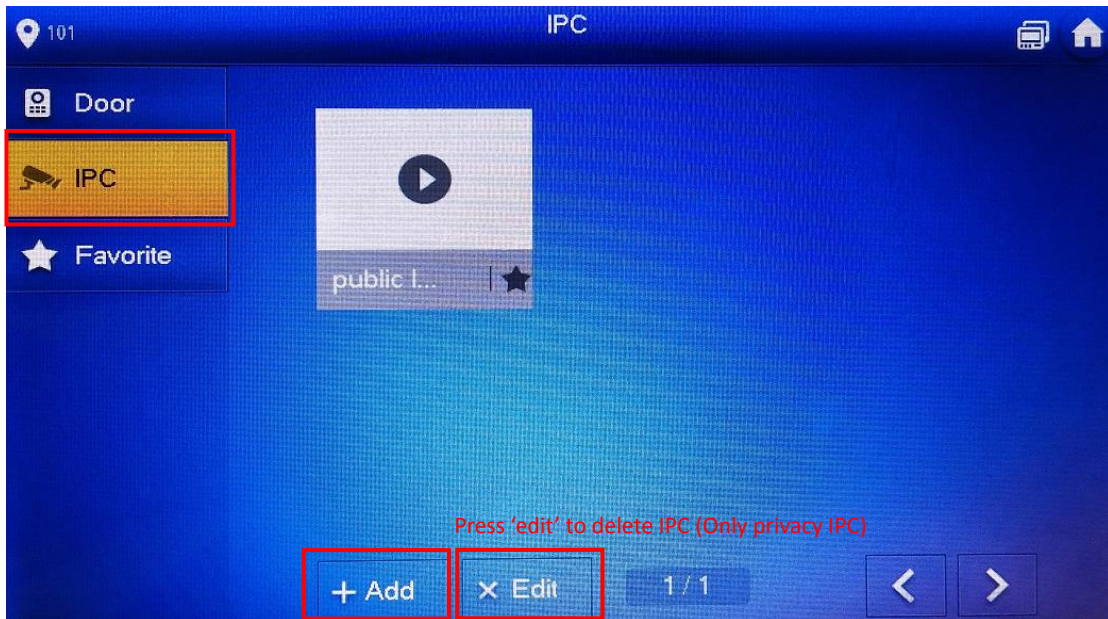


### 3.2 How to add privacy IPC

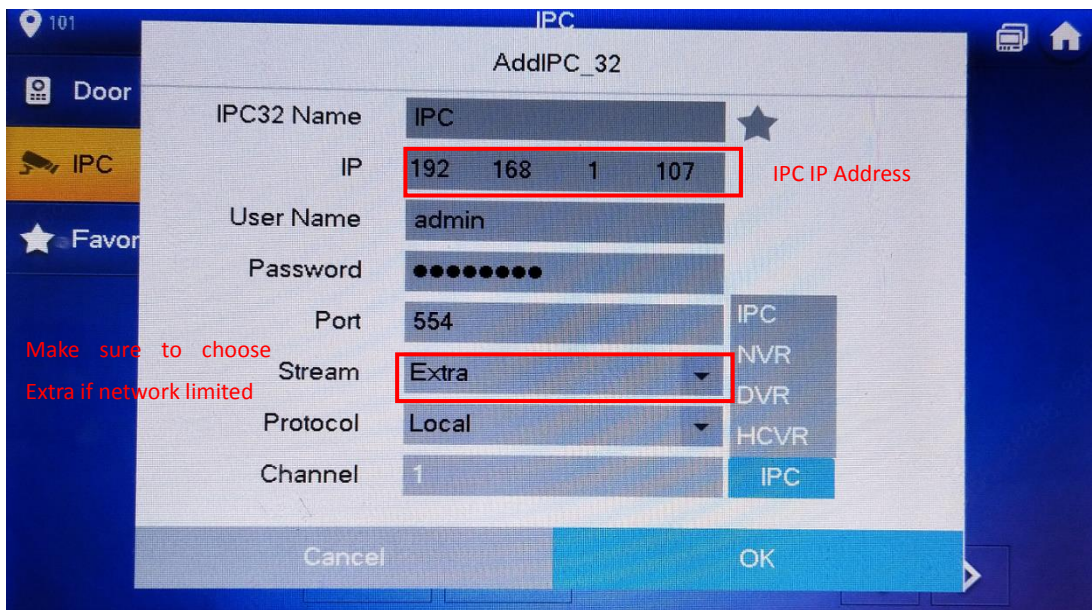
You can add IPC directly, and you can add IPC on one certain channel of NVR/ DVR/HCVR as well.

- Step 1 Press 'Monitor' icon, select 'IPC'.



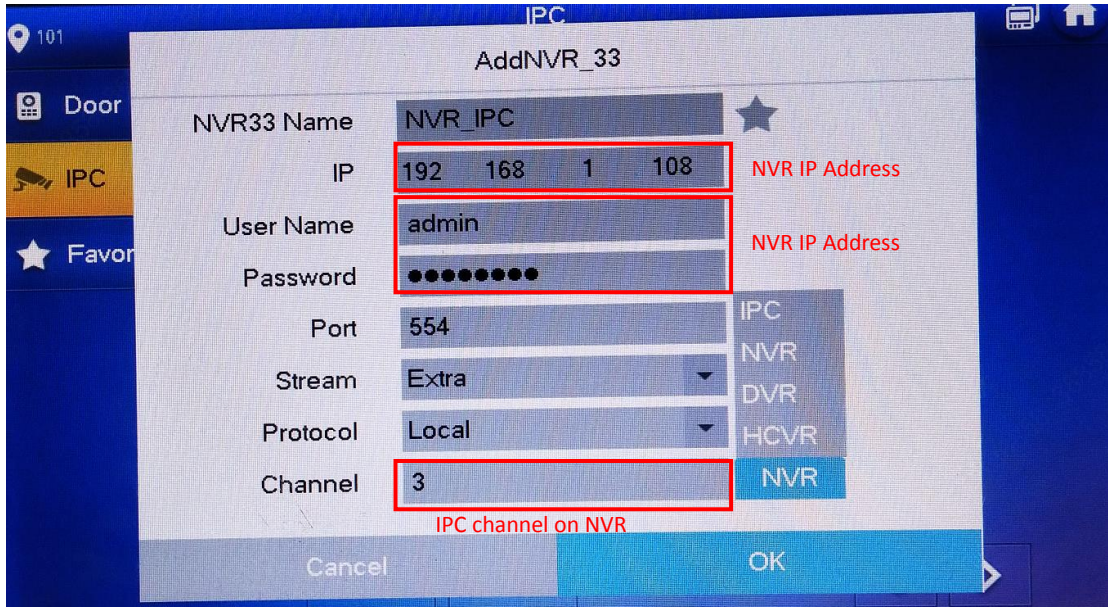


Step 2 Press '+Add' to add new privacy IPC. If the network bandwidth is limited, you had better choose 'Extra'.



Add IPC which is connected on NVR:





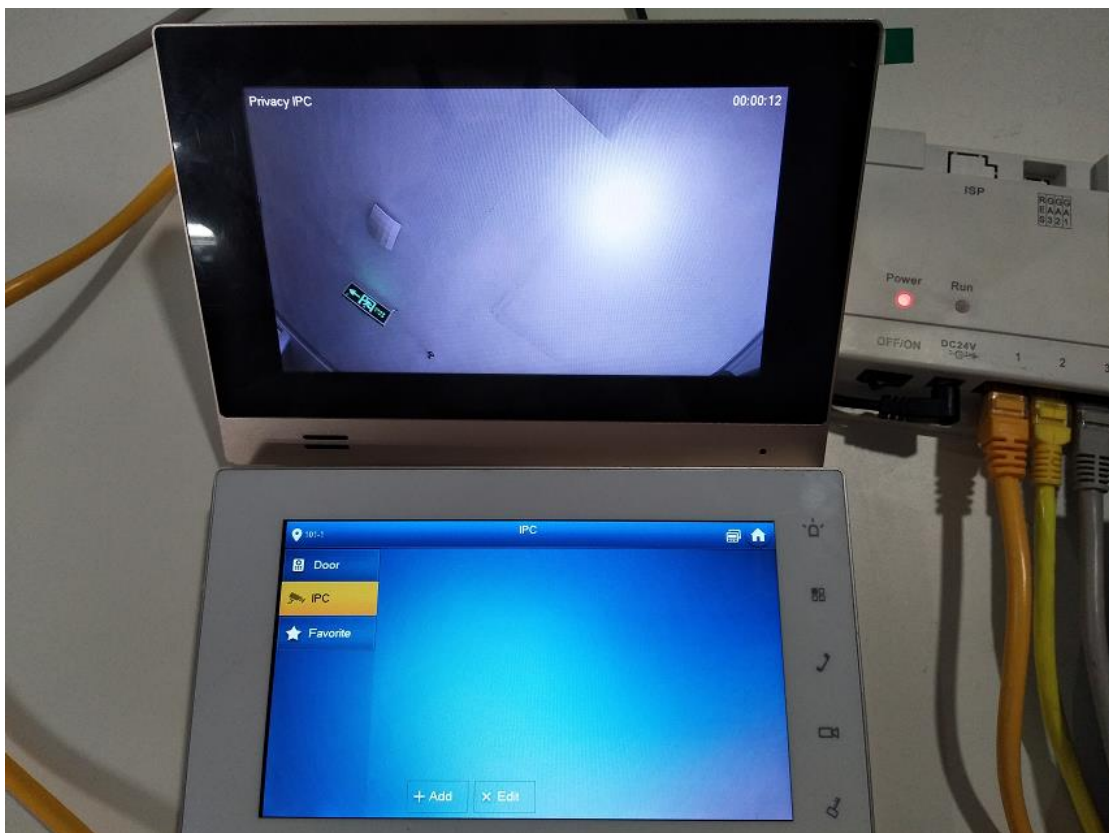
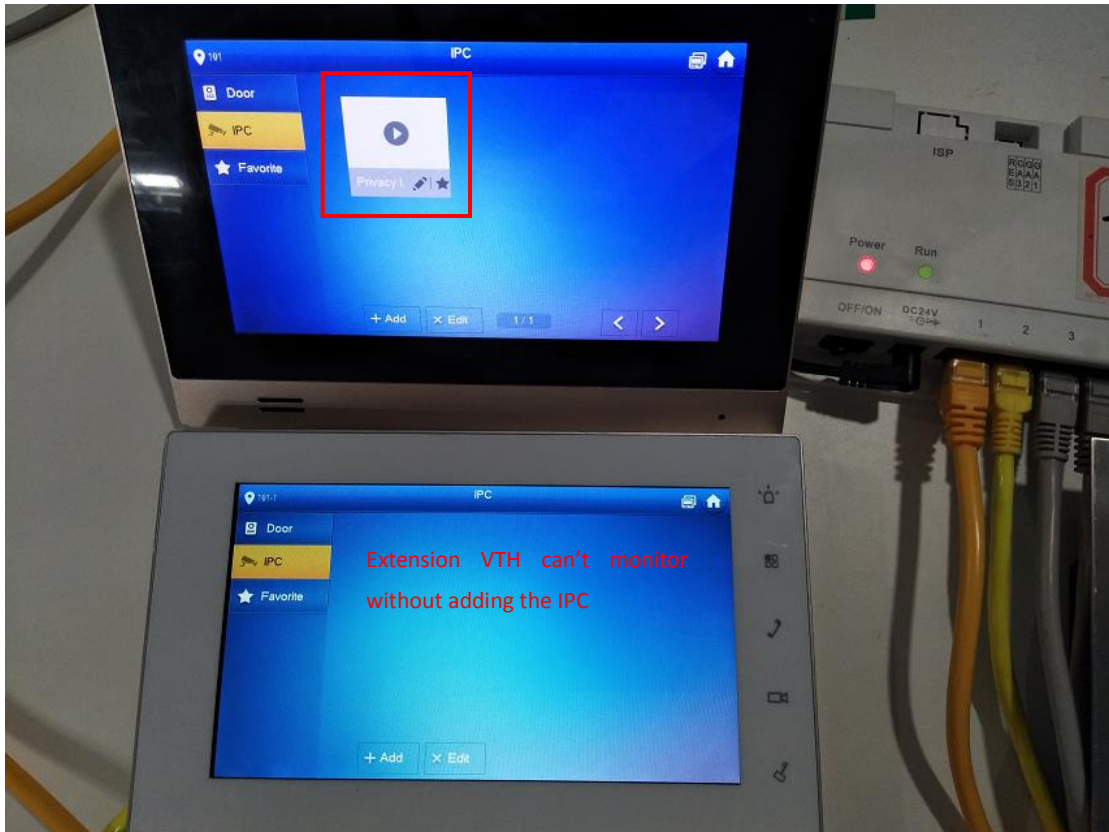
### 3.3 Check result

Press 'Monitor' icon, select 'IPC', then you can see all added IPC including public IPC and privacy IPC.

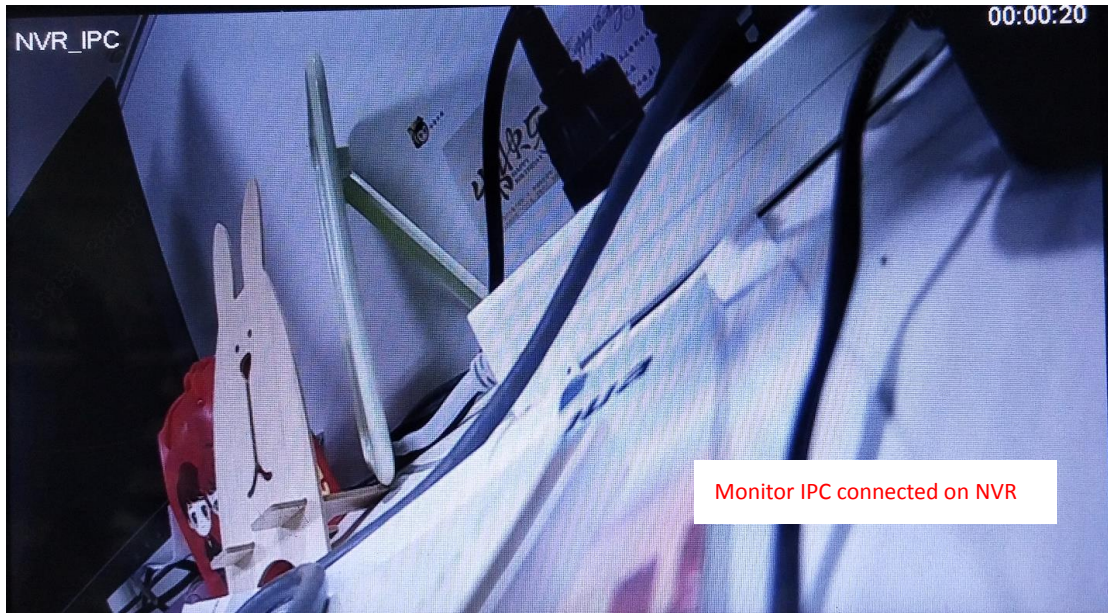
You can monitor the public IPC at master and extension VTH.



You can monitor the privacy IPC only at the VTH who added it.





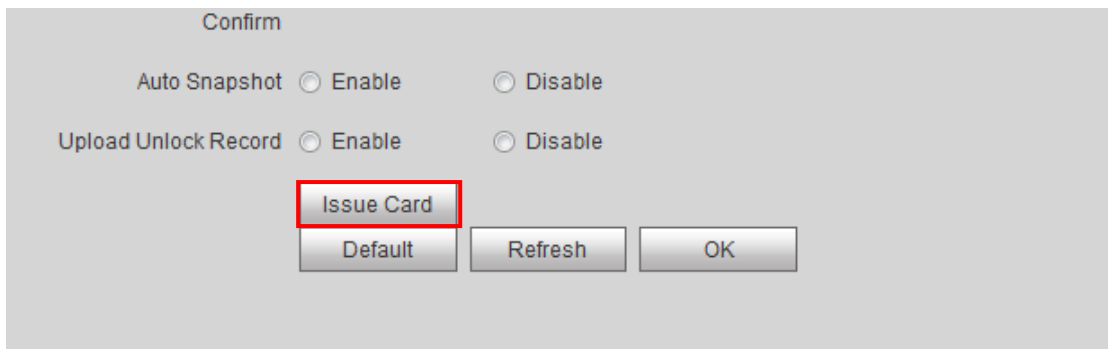


#### 4. How to issue card

There are two ways to issue card: issue card on VTO web interface and issue card locally.

##### 4.1 How to issue card on VTO web interface

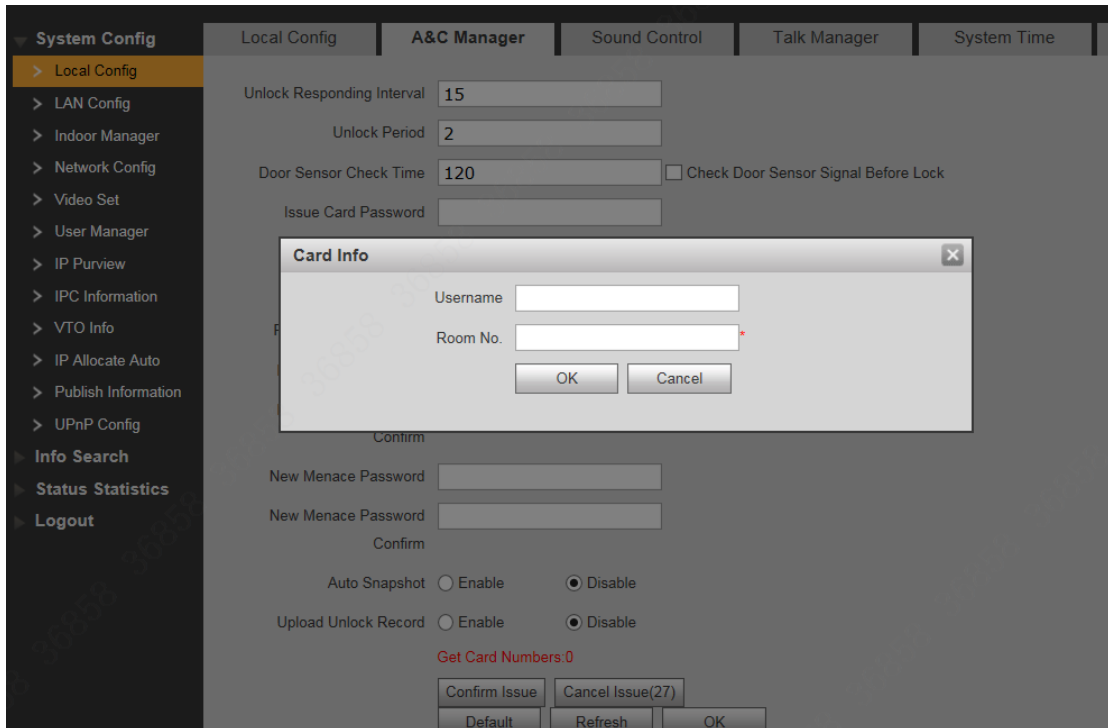
Step 1 Check system config -> Local Config -> A&C Manager, click on 'Issue Card'.



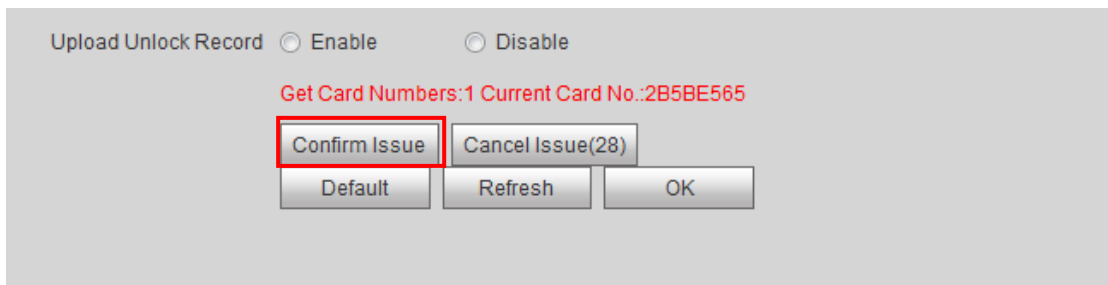
Step 2: Brush your card on VTO1220BW card reading area.



Step 3: There will be a pop-up at the top of VTO web interface. Fill in the “Username “and “Room number”.

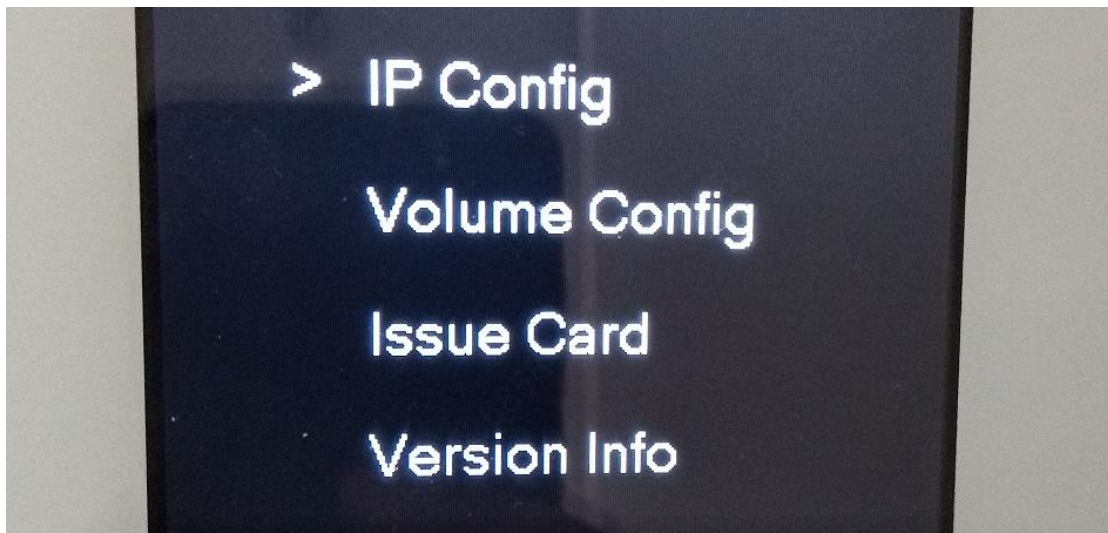


Step 4: Click on Confirm Issue.

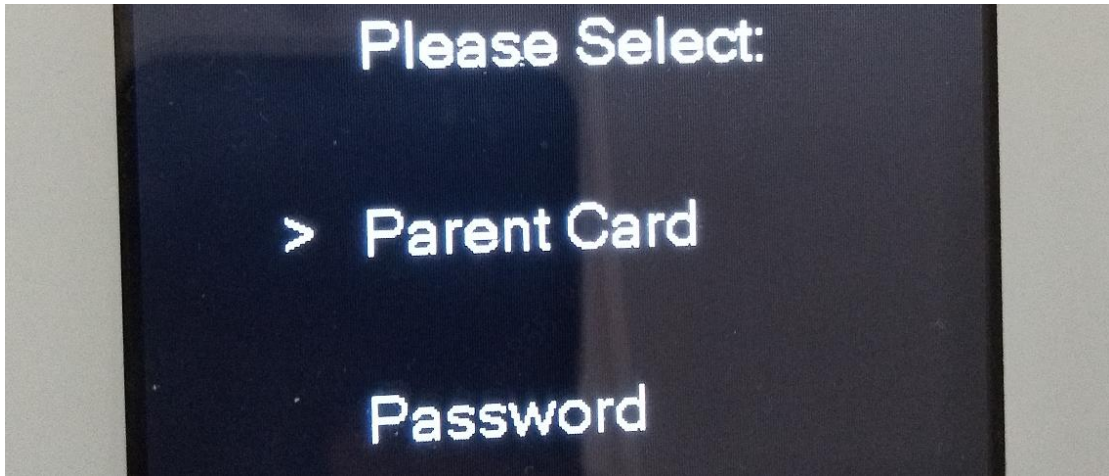


#### 4.2 Locally issue card

Step 1 Press '\*' on the VTO touch pad, and input project password( default psw is 888888), then press '#' to enter the main menu.

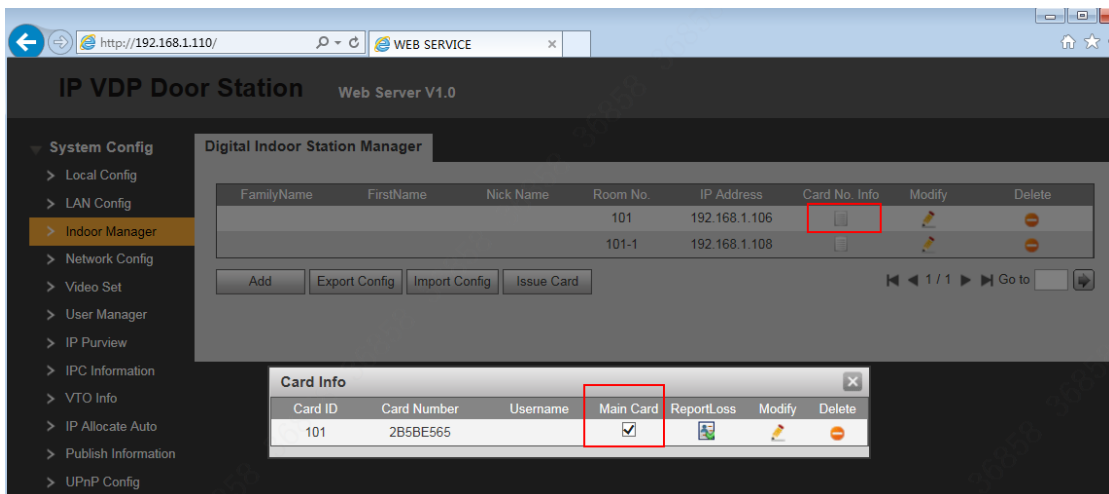


Step 2 Press 2 and 8 to move the cursor, select 'Issue Card'. There are two types of verification ways to issue card: 'Parent Card' and 'Password'.



➤ **Parent Card verification:**

(1) Firstly, you need to issue a card on VTO web interface as the above steps and set it as parent card. VTO web interface, check Indoor Manager, click 'Card NO Info', set the card as 'Main Card'.



(2) Select 'Parent Card', then Brush the parent card.



(3) Send room number.





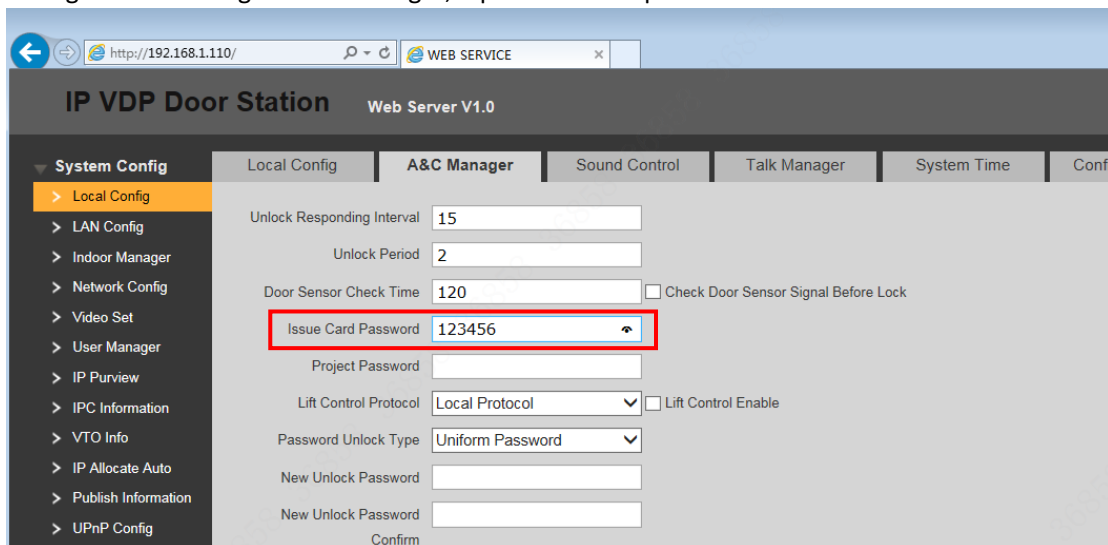
(4) Brush the son card (the new mifare card).



(5) Issue card successfully.

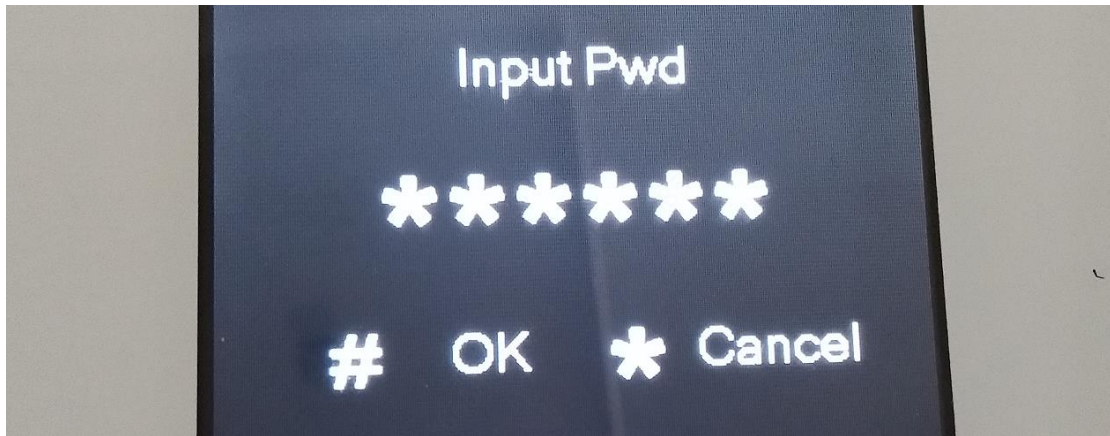
➤ **Password verification:**

(1) Firstly, you need to set the issue card password on VTO web interface. Check System Config -> Local Config -> A&C Manager, input issue card password and click 'OK' to save.



(2) Select 'Password', and input the issue card password.





(3) Send room number.



(4) Brush the son card (the new mifare card).



(5) Issue card successfully.

#### 4.3 Check result

Swipe your card in the card area to open the door.



## 5. How to configure: SmartPSS

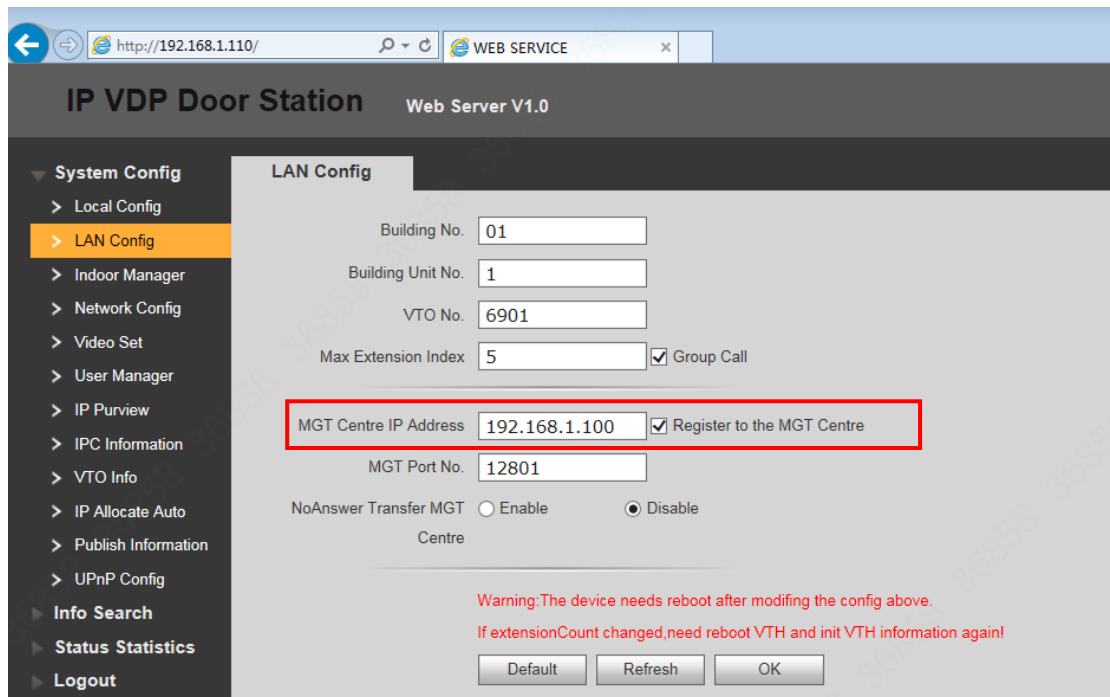
### 5.1 How to register to the platform

Step 1 VTO web interface- > System Config - >LAN Config, input MGT center IP Address, and check 'Register to the MGT'.

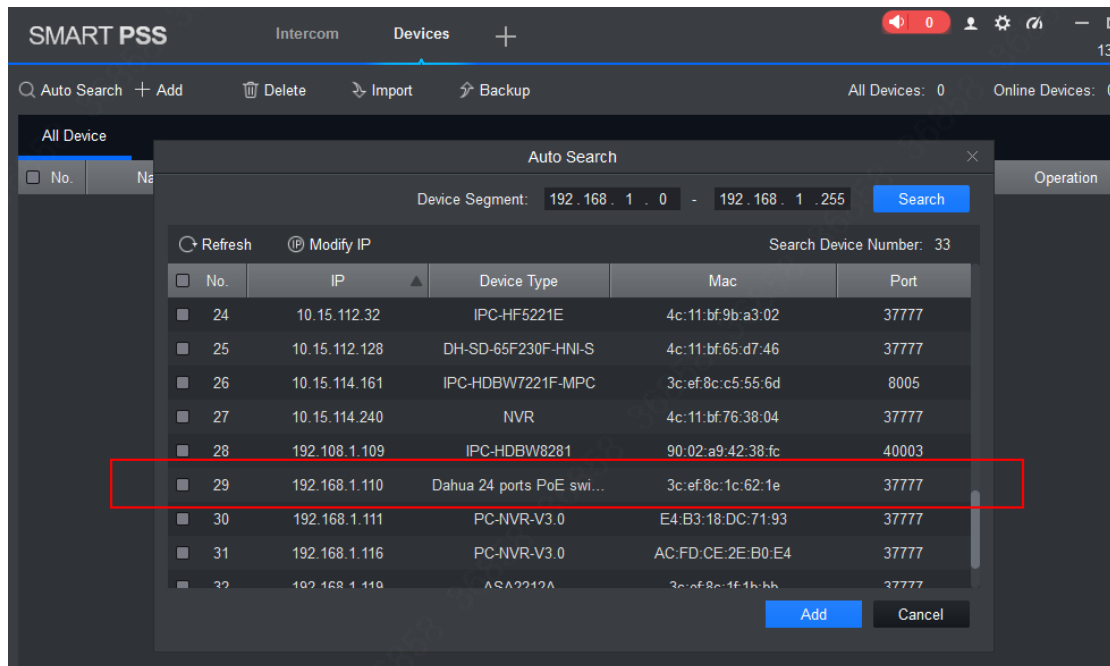
Step 2 If you enable 'No answer transfer to MGT', the call will transfer to MGT when nobody answered.

**Note:** 'No Answer Transfer' and 'Leaving Message' functions have only one enable at one time. If you want to enable 'No Answer Transfer' function, you must set 'VTO Message Time' as 0 second (setting -> General -> Other).

Step 3 Click 'OK' to save and reboot the device.



Step 4 Add device on SmartPSS. Click 'Auto Search' to search the devices, and select the VTO and VTH to add.



**Note:** In cybersecurity baseline, you must input the correct account and password. For VTH, account is 'admin', password is projecting password (default 888888).

SMART PSS Intercom Devices + 13:42:09

Auto Search + Add Delete Import Backup All Devices: 3 Online Devices: 3

No.	Name	P/Domain Name	Device Type	Device Model	Port	annel Numl	Online Status	SN	Operation
1	192.168.1.106	192.168.1.106	DVR	VTH1510CH	37777	1/0/8/1	Online	1B00F17PAN00046	[edit] [refresh] [delete]
2	192.168.1.108	192.168.1.108	DVR	VTH1510CH	37777	1/0/8/1	Online	1B00F17PAN00074	[edit] [refresh] [delete]
3	192.168.1.110	192.168.1.110	VTO	VTO1220B	37777	0/0/0/0	Online	PFZ3FZ01300006	[edit] [refresh] [delete]

Step 6 Modify VTS Address to the MGT center IP address.

SMART PSS Intercom Devices +

Admin Online  
Tel 80000000

Set VTS Address

VTS Address 192.168.1.100

OK Cancel

## 5.2 Check result

➤ MGT center Calls VTH:

SMART PSS Intercom Devices + 11:28:01

Contact Input Search Criteria Please input search criteria, as 1#1#101

默认分组

1-101  
1#1#101

VT Name  
VT Phone

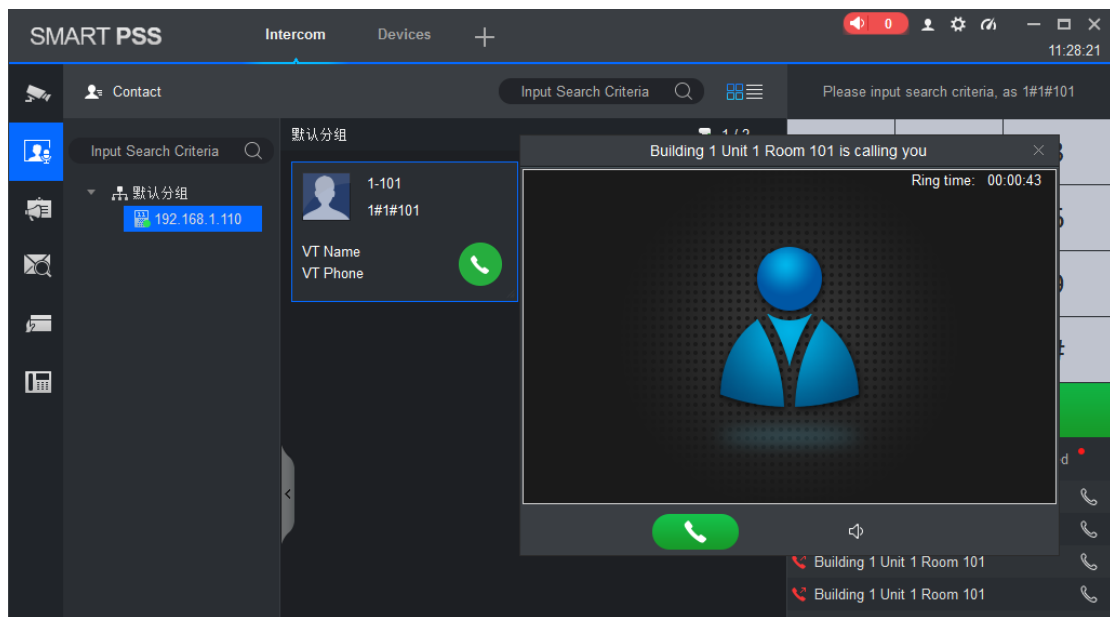
You are calling: Building 1 Unit 1 Room 101  
Ring time:

Calling, please wait a moment...

Building 1 Unit 1 Room 101

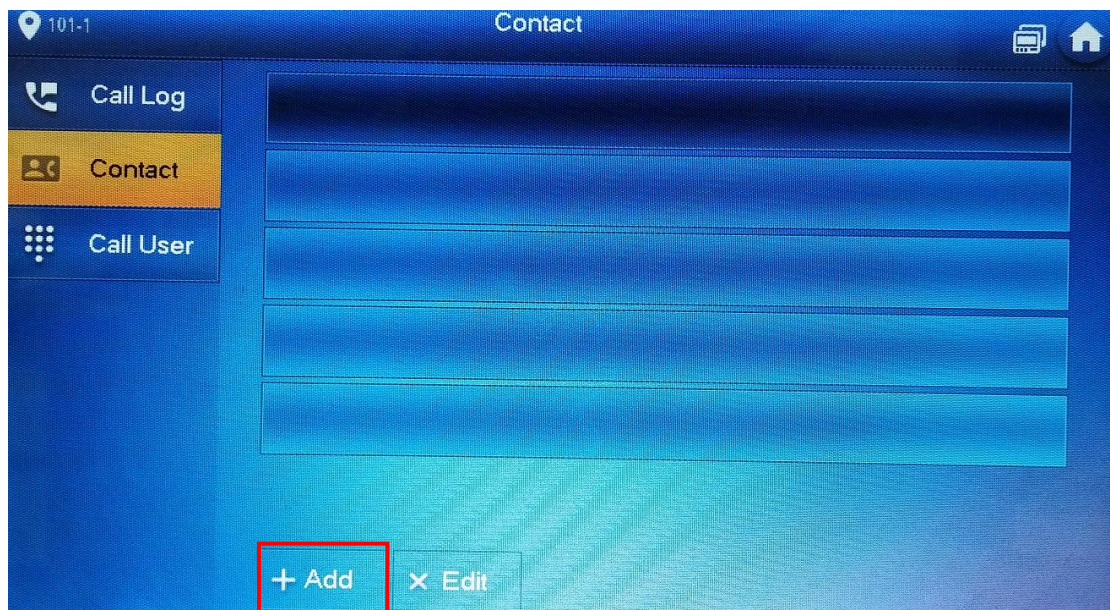


➤ **VTH Calls MGT center:**

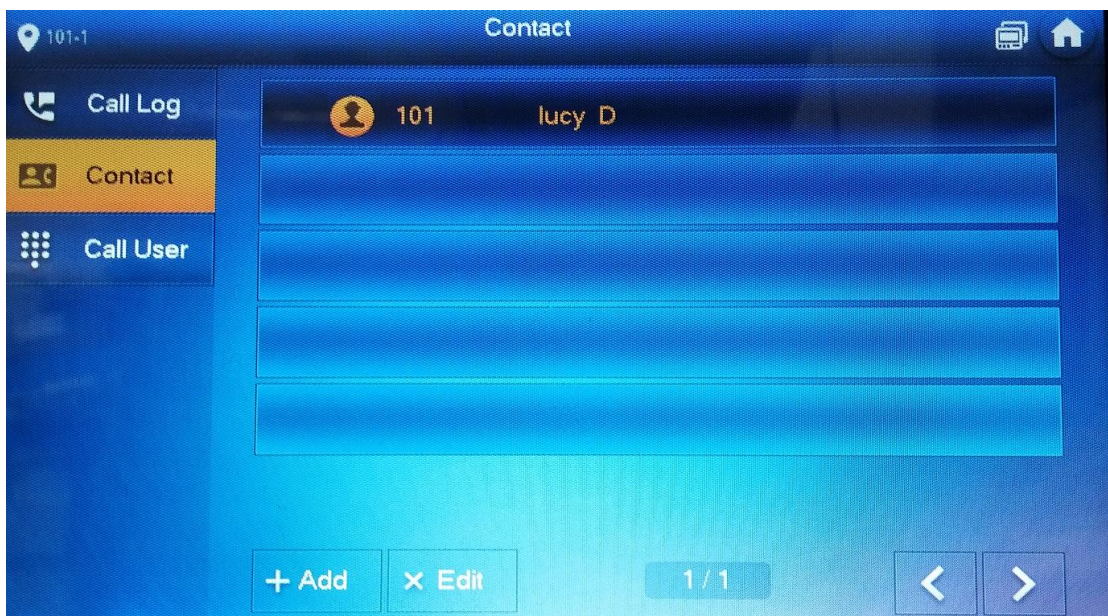
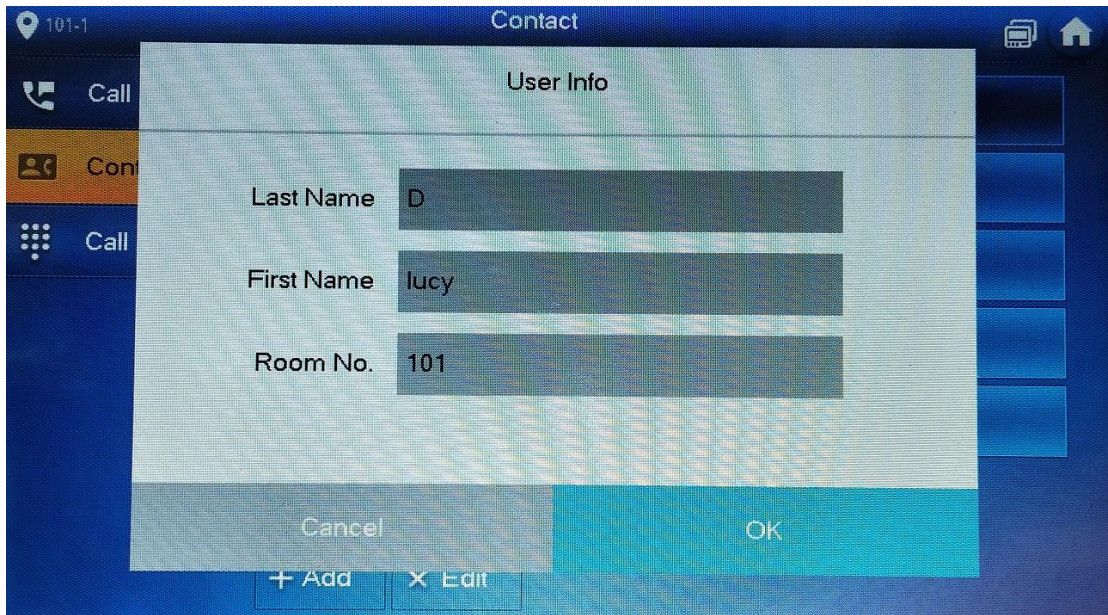



**6. How to add address book in VTH**

Step 1 Press 'Call' button, check 'Contact' -> Add, input the contact information.







Step 2 Call the contact. Press the item of your contact, click the  button to send the call.



