

Success Case of Oversea Parking Guidance System

Base on the video analysis technology



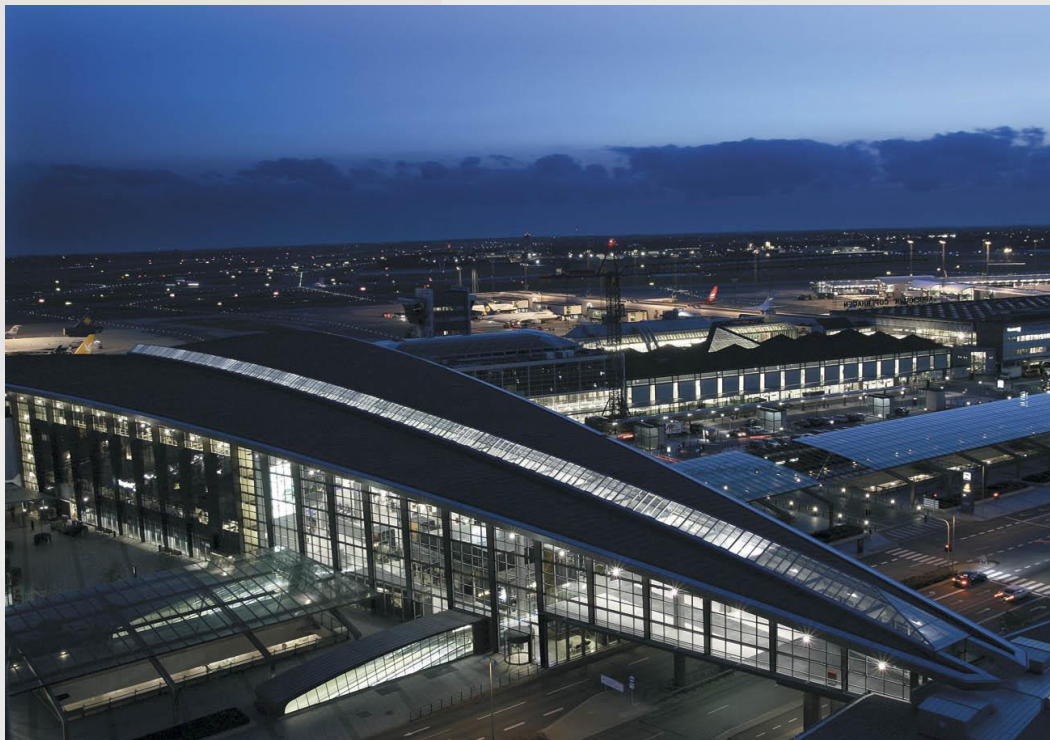
Solution: Jiang_cheng@dahuatech.com

Zhang_jieruo@dahuatech.com



European Parking Project

Denmark Copenhagen Airport



*Work together with Scanview System

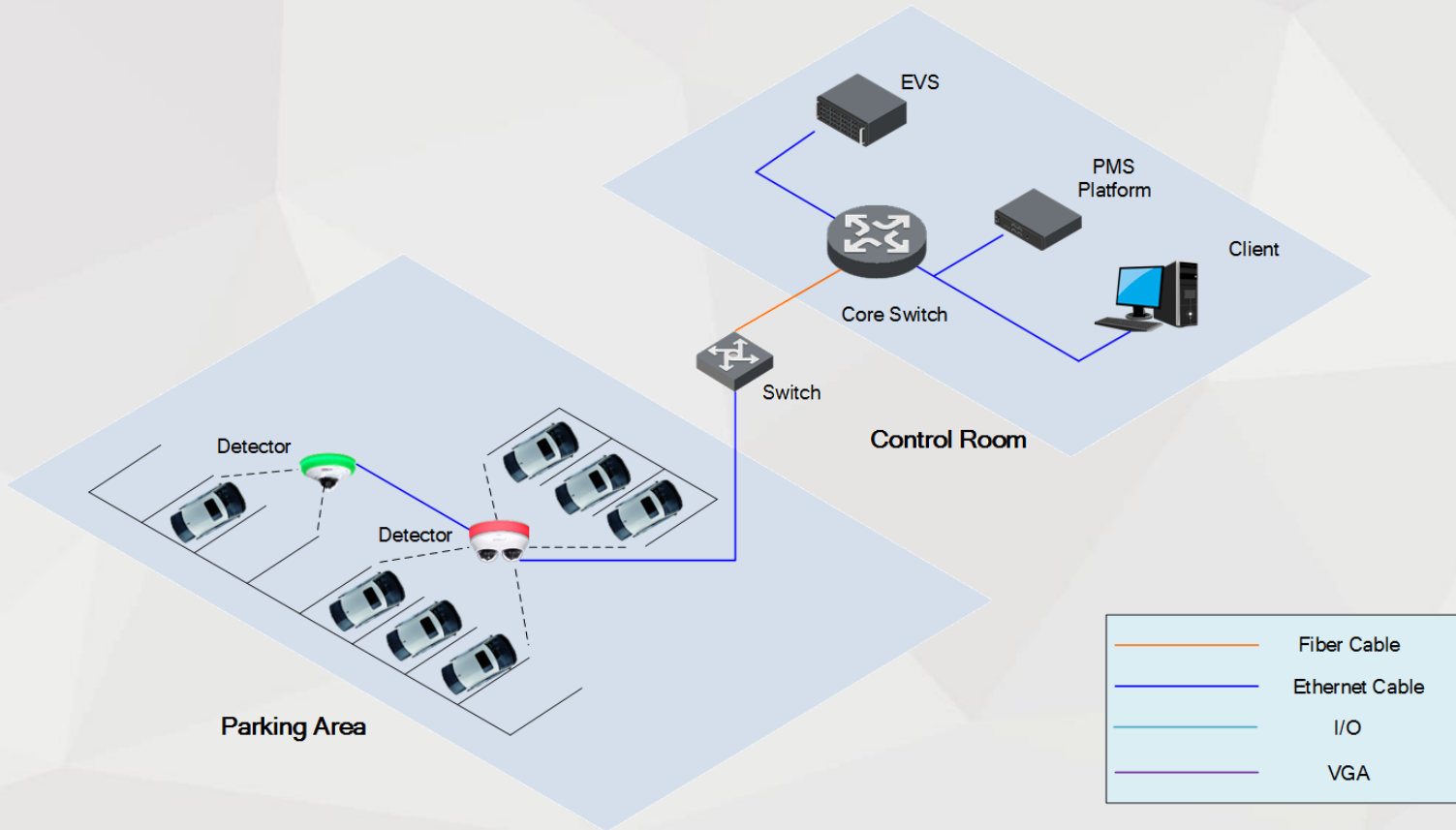
■ Project Overview

- 950 Parking spaces /199 Dual-lens Detection Camera (first stage)
- PMS

■ Project Requirement

- Parking Guidance System
- Providing indispensable data to third-part platform, base on the premise that define the parking price policies.
- Business Intelligent Analysis
- Double-parking Detection

System Topology



Parking Guide System



Spot Detector

Detection camera will tell you if the parking spot is occupied or not. Also provide video stream to the storage system.



ANPR

Automatically identify the current parking space of the license plate information, and provide the plate number to "Vehicle Locating System"



Double Parking Alarm

PMS Home Live Playback **Event Center** Map Available Parking Spaces: 0

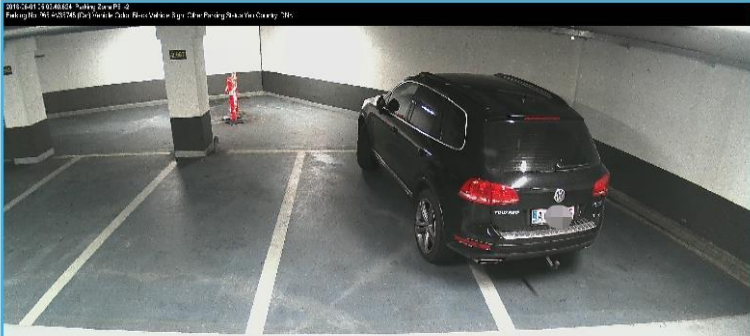
Device: Pending Processed

Event

Alarm Type: Double parking

Alarm Time	Parking Spcace	Car plate	Owner	Car group	Operation
2018-06-01 05:17:06	P8_-2_968			Unknown	
2018-06-01 05:02:40	P8_-2_969	AV_15		Unknown	
2018-06-01 01:58:17	P8_-1_966			Unknown	
2018-06-01 01:10:11	P8_-1_518			Unknown	

Double Parking Alarm



06/01 00:00-06/01 23:59 Search 20 per records 1 / 1



Double-parking Detection

Based on video analysis technology, determine whether the vehicle occupies two parking spaces



Automatically Warning

Automatically alert on the platform when the Double-parking event is detected.

Comprehensive Surveillance

The screenshot displays the PMS interface with a table of parking records. A video playback window is overlaid on the table, showing a car in a parking space. The table has the following columns: Entry Picture, Exit Picture, Plate No., Entry Time, Exit Time, Parking, and Operation. The records are as follows:

Entry Picture	Exit Picture	Plate No.	Entry Time	Exit Time	Parking	Operation
		4M2670	2018-04-26 21:27:50	2018-04-26 22:57:46	E014	
		-	2018-04-26 21:15:04	2018-04-26 22:57:46	E213	
		-	-	-	D303	
		B160972	-	-	F161	
		3ALB151	-	-	O132	
		4K90358	-	-	B232	
		4LP3008	-	-	B050	
		2SP4076	-	-	B132	
		6ATK700	-	-	B180	
		5U49417	-	-	B151	
		38T10617	-	-	B087	
		2J9F991	2018-04-26 21:10:21	2018-04-26 22:49:22	E011	
		6AT5296	2018-04-26 22:17:55	-	D182	
		QF5V	2018-04-26 22:14:07	-	F111	

The video playback window shows a car in a parking space with a yellow pillar and orange cones. The playback controls show a progress bar from 00:00:02 to 00:04:33.



Video Surveillance

Offers 24x7 surveillance features using the LPR Camera and Space Detector.

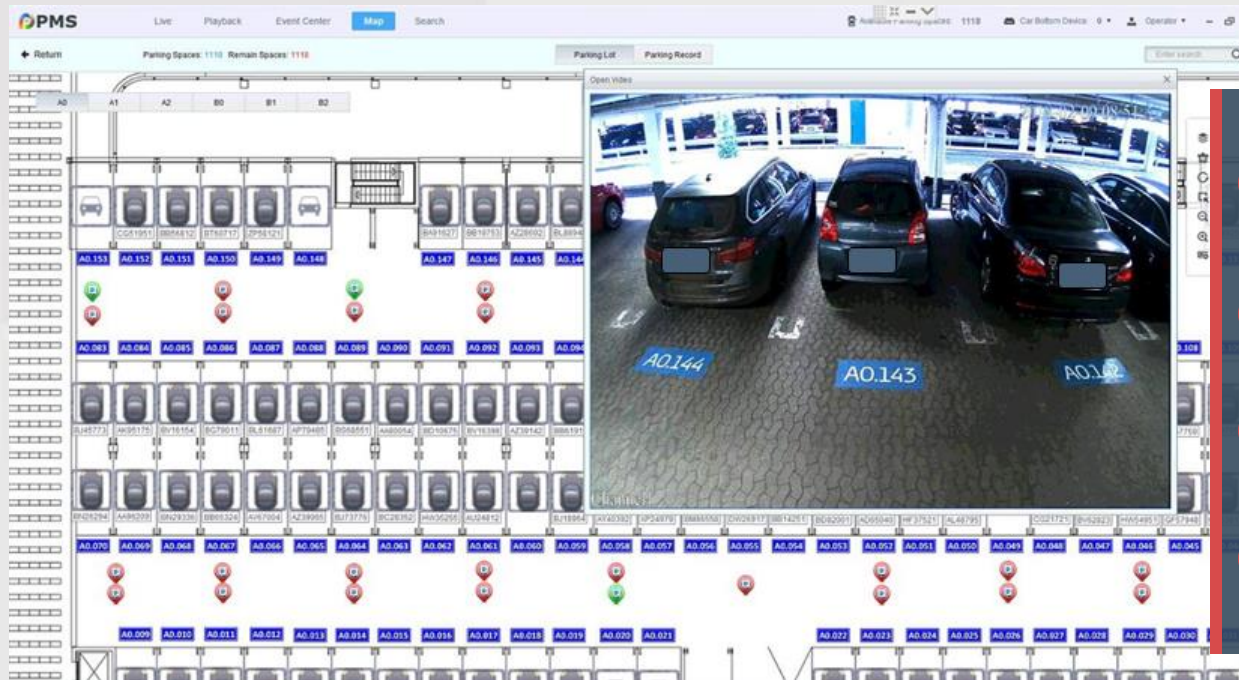


Searching Everything

Search the video and image by date/time/license plate number from the storage.



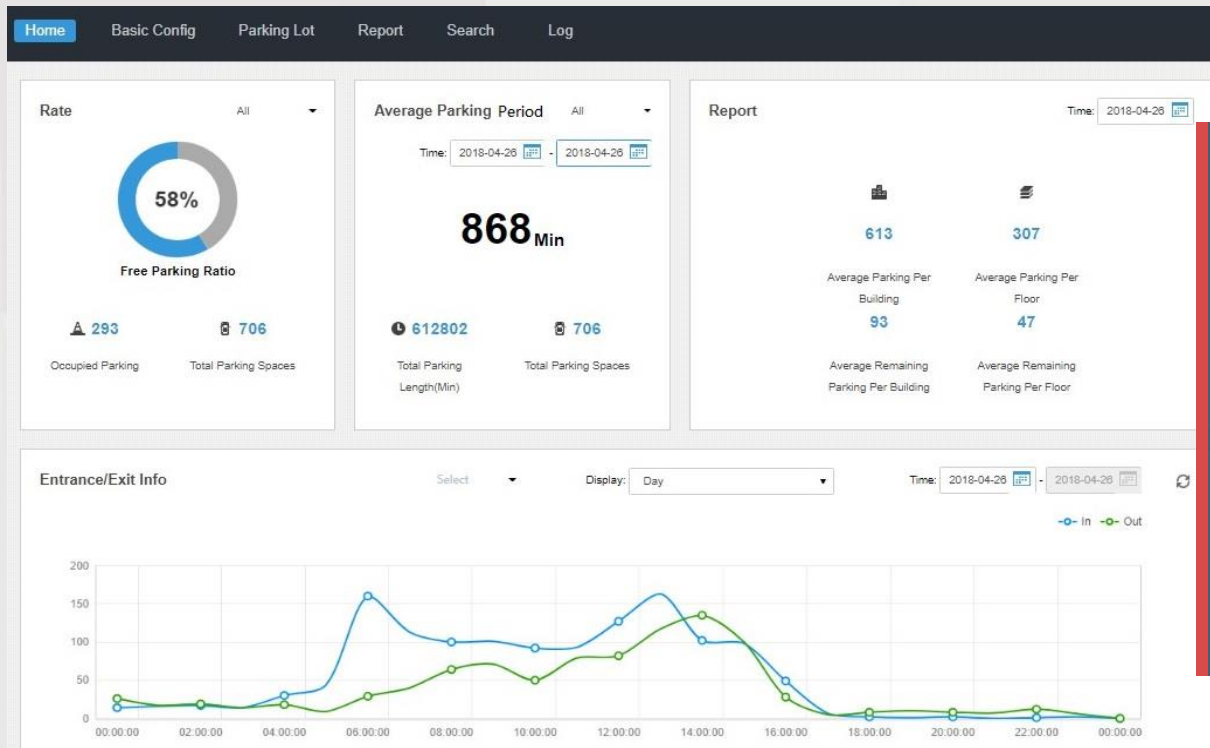
Controlling Everything On The E-Map



- ✓ **Visual Management:** Specially design for parking management. Visual interface and operation.
- ✓ **Spaces & Devices Status:** visually display the status of the Parking Spaces & device in the map.
- ✓ **Preview & Playback:** providing video preview and playback.
- ✓ **Find The Car:** base on ANPR technical, you can find out the exactly spot for specific vehicle.



Professional Parking Management System



All Relevant Information: Clearly sees the detail with software platform, monitor your entire facility. you can use the data to streamline costs and maximize efficiency.

Smart Search: Search the video and image by date/time/license plate.

Parking Log: Rich parking, entry and exit history log, including vehicle picture, license plate, parking spaces, time information and etc..



Third-part Platform Integration (Under-integration)



Dahua Technology Co., Ltd.

Dahua Parking Management System Integration Protocol

Version	Date	Author	Description
1.0	2017-03-30	James Cai	

This publication is protected by copyright property and may not be copied, published and distributed in any form without permission of the publisher - Dahua Technology Co., Ltd.

Prices & Products

Read more about our prices and products here.

Budget

The cheapest parking at the airport

7-10 min. walk to the terminals

Outdoor parking

From
360,- /week
Online price

Standard

Best location for the price

5-7 min. walk to the terminals

In- and outdoor car parks

From
1100,- /week
Online price

Standard+

Walking termin

5 min. walk to the terminals

In- and outdoor car parks

From
1250,- /week
Online price

Direct

Park right by the check-in area

5 min. walk to the terminals

In- and outdoor car parks

From
1250,- /week
Online price

We Park You Fly

Let us park the car

5 min. walk to the terminals

In- and outdoor car parks

From
1250,- /week
Online price



Provide Integration Service: Define the protocol of data, if necessary; including Number Plate, parking spot ID, type of illegal parking and so on.



Provides Data Support For Customers' Business: e.g. different pricing for different parking spaces, optimization of parking traffic flow, provision of VIP parking service, etc..

Manage your reservation

Change, cancel or re-send your parking reservation

Denmark Billund Airport



*Work together with Scanview System

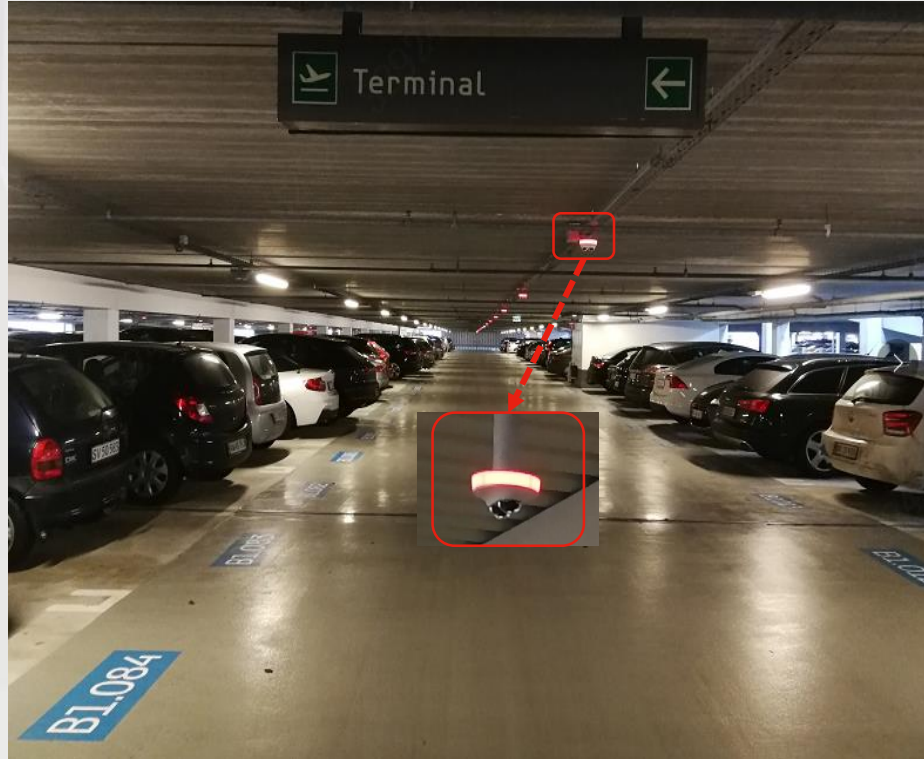
■ Project Overview

- 1217 Parking Spaces/230 Dual-lens Detection Camera
- 3 Guidance Screen
- 1 kiosk

■ Project Requirement

- Parking Guidance System
- Find My Car System
- 24*7 hours Video record in the Parking Lot, protect the customer property.

Denmark Airport





Device List

NO.	Device Name	Model	Unit	Quantity
1	Guidance Screen	DHI-IPMPGI-220AA	Set	4
2	Platform Server	DHI-PMS8000	Set	1
3	Storage	DH-EVS7024S-R (30T)	Set	1
4	Storage	DH-EVS7024S-R (24T)	Set	1
5	Switch	DH-PFS6428-24T	Set	3
6	Car Locator	DHI-IPMPGS-200A	Set	1
7	Spot Detection Camera	DHI-ITC314-PH1A-TF2	Set	230



Netherland Jaarbeurs Exhibition Center



■ Project Overview

- 769 Parking spaces /285 Detection Camera/
- 20 Guidance Screen
- 3 kiosk

■ Project Requirement

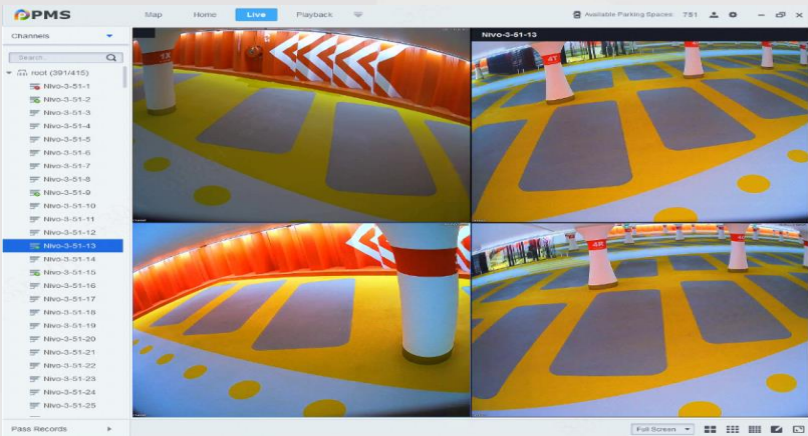
- Parking Guidance System
- Find My Car System
- Integrate with 3 part LED Sign
- 24*7 hours Video record in the Parking Lot, protect the customer property.

Netherlands Jaarbeurs Exhibition Center

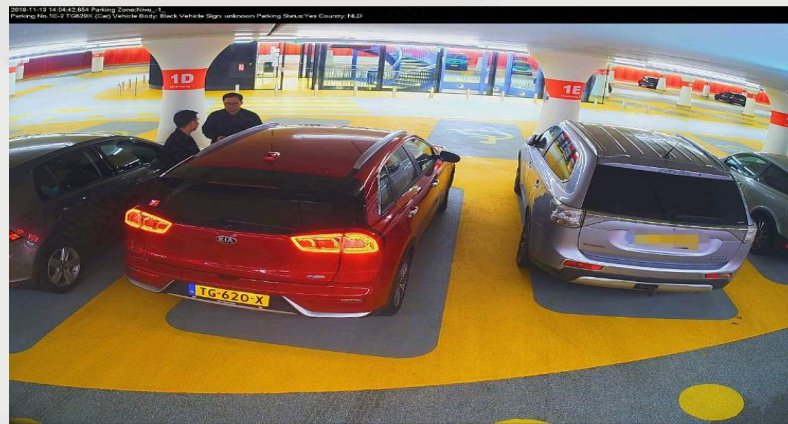
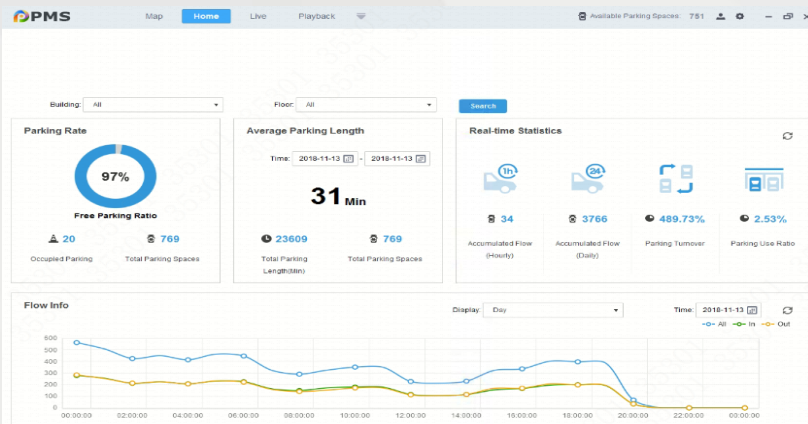




Netherland Jaarbeurs Exhibition Center



Entry Picture	Exit Picture	Plate No.	Entry Time	Exit Time	Parking	Operation
		86	2018-11-12 11:53:49	2018-11-12 11:54:22	Nwo_1_48-1	
		30	2018-11-12 11:54:10	2018-11-12 11:54:16	Nwo_1_1K-1	
		09	2018-11-12 11:53:46	2018-11-12 11:53:59	Nwo_1_1K-1	
		6A	2018-11-12 11:53:09	2018-11-12 11:53:46	Nwo_1_48-1	
		09	2018-11-12 11:52:59	2018-11-12 11:53:40	Nwo_1_1K-1	
		6A	2018-11-12 11:52:03	2018-11-12 11:52:54	Nwo_1_48-1	
		09	2018-11-12 11:52:13	2018-11-12 11:52:56	Nwo_1_1K-1	
		F	2018-11-12 11:52:36	2018-11-12 11:52:36	Nwo_1_3G-4	
			2018-11-12 11:50:47	2018-11-12 11:52:00	Nwo_1_1K-2	
		06	2018-11-12 11:51:43	2018-11-12 11:51:57	Nwo_1_48-1	
		09	2018-11-12 11:51:22	2018-11-12 11:51:57	Nwo_1_1K-1	
		5X	2018-11-12 11:51:12	2018-11-12 11:51:41	Nwo_1_3A-1	
		P66	2018-11-12 11:51:19	2018-11-12 11:51:36	Nwo_1_48-1	
		30	2018-11-12 11:47:30	2018-11-12 11:51:16	Nwo_1_1K-1	



■ Czech Republic Shopping Mall



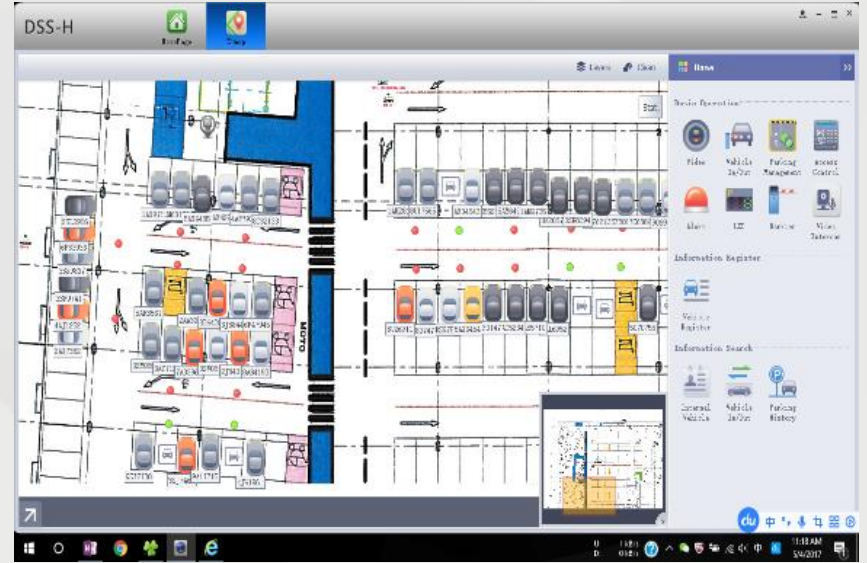
■ Project Overview

- 2500 Parking spaces /925 Detection Camera/ 5 kiosk
- 20 Guidance Screen
- 5 kiosk

■ Project Requirement

- Parking Guidance System
- Find My Car System
- 24*7 hours Video record in the Parking Lot, protect the customer property.

Czech Republic Shopping Mall

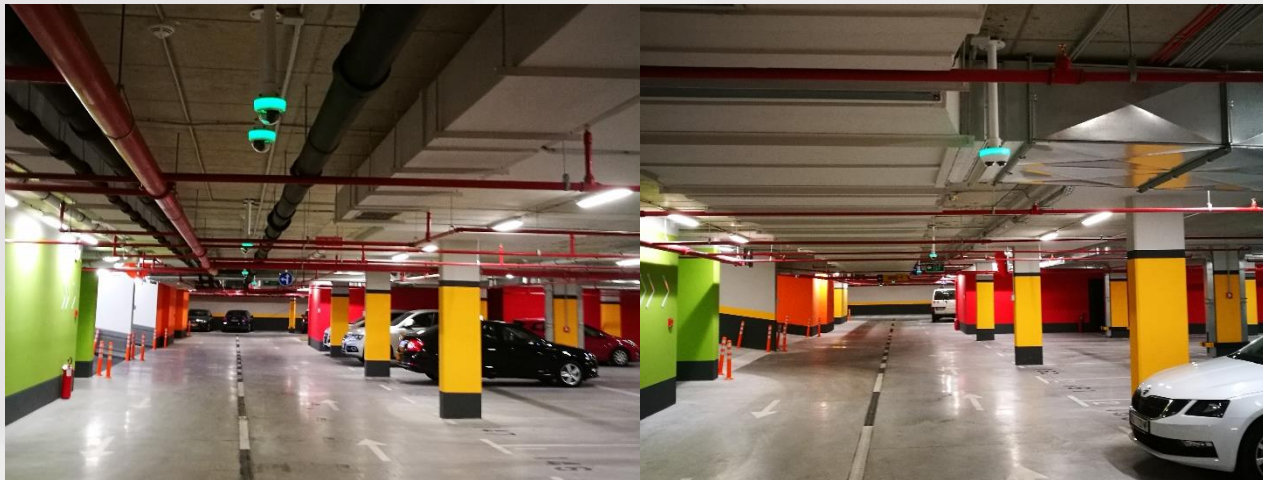




Device List

NO.	Device Name	Model	Unit	Quantity
1	Spot Detection Camera	ITC314-PH1B-F2	Set	900
2	Spot Detection Camera	ITC314-PH1B-F3	Set	25
3	Car Locator	IPMPGS-200AA	Set	2
4	Storage	EVS7048	Set	2
5	Guidance Screen	IPMPGI-230AA	Set	5
6	Guidance Screen	IPMPGI-210AA	Set	10
7	Guidance Screen	IPMPGI-220AA	Set	5
8	Platform Server	PMS8000	Set	1

Serbia Residence Community



■ Project Overview

- 400 parking spaces/115 detection cameras
- 4 access ANPR cameras and VTOs

■ Project Requirement

- Control the entrance and exit by ANPR whitelist
- Private parking spaces management (VIP Management)
- 24*7 hours video record in the parking



Device List

NO.	Device Name	Model	Unit	Quantity
1	Spot Detection Camera	ITC314-PH1B-F2	Set	103
2	Spot Detection Camera	ITC314-PH1A-TF2	Set	13
3	Access ANPR Camera	ITC237-PW1B-IRZ	Set	5
4	Video Intercom	VTO2000A	Set	4
5	Storage	EVS5024	Set	6
6	Platform	PMS	Set	1

Turkey Ispark Parking



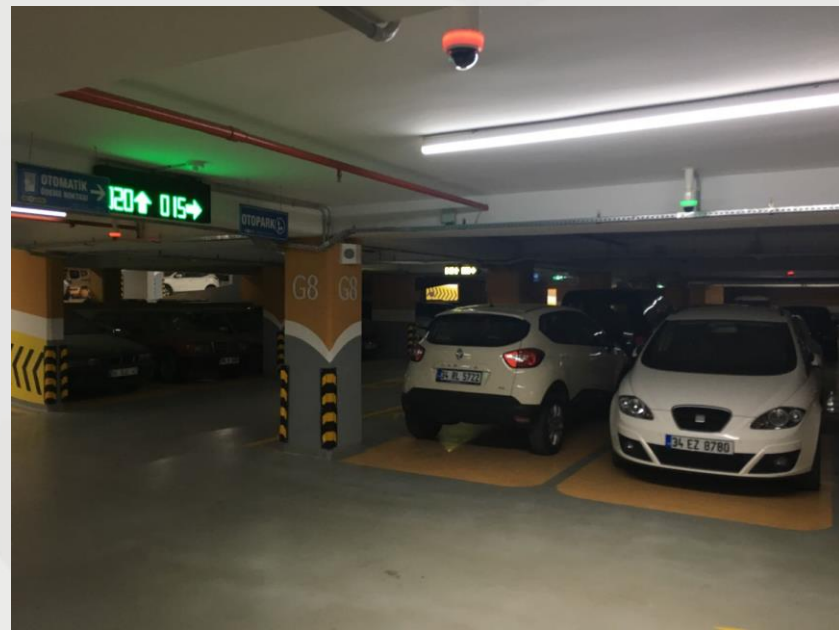
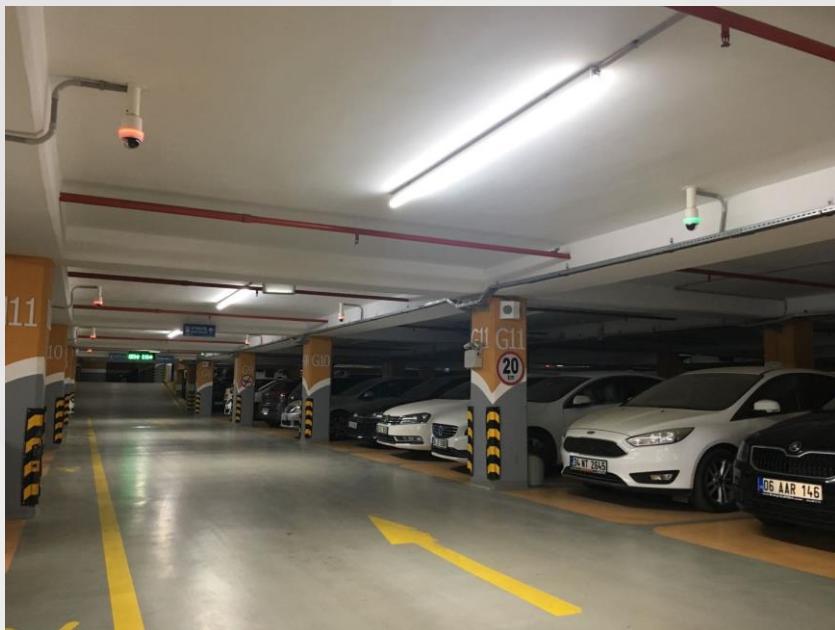
■ Project Overview

- More than 1000 parking spaces
- 537 detection camera
- 120 indoor guidance screens
- 2 outdoor guidance screens

■ Project Requirement

- Parking guidance system
- Find My Car
- 24*7 hours Video record in the Parking Lot, protect the customer property.

Turkey Ispark Parking





Device List

NO.	Device Name	Model	Unit	Quantity
1	Spot Detection Camera	DHI-ITC114-PH1B-F3	Set	111
2	Spot Detection Camera	DHI-ITC314-PH1B-F3	Set	126
3	Spot Detection Camera	DHI-ITC314-PH1A-TF3	Set	300
4	20 Ports Switch (16+4)	PFS4220-16T	Set	7
5	Storage	EVS7024-S	Set	2
6	Platform	PMS8000	Set	1
7	Guidance Screen(Two Layer)	DHI-IPMPGI-221AA	Set	1



Asian Parking Project

Kyrgyzstan Shopping Center



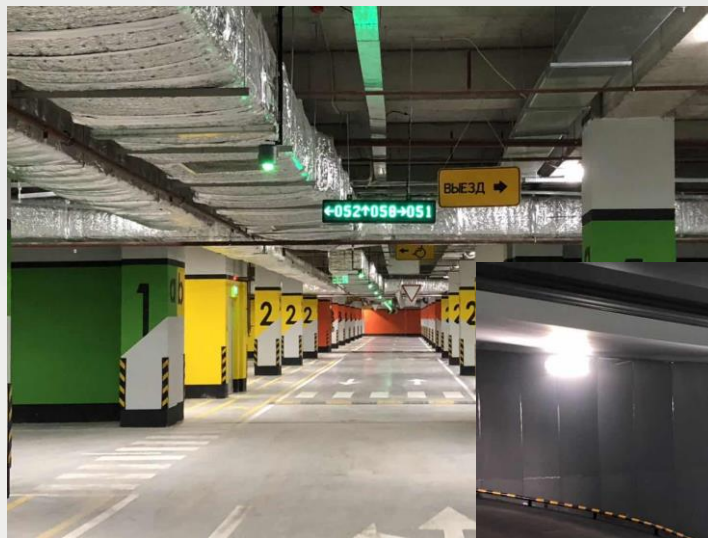
■ Project Overview

- 2 Access ANPR cameras/ 2 Entrance& Exit
- 300 Parking space/ 69 Detection Camera/
- 7 Guidance Screen

■ Project Requirement

- Manual Payment System, create revenue
- Parking Guidance System
- 24*7 hours Video record in the Parking Lot, protect the customer property.

Kyrgyzstan Shopping Center



Mongolian Shopping Center



Project Overview

Shopping mall & Bank's parking Building, higher passenger throughput

- 500 Parking Spaces, 102 Spot Detection Camera
- Manual Payment System, create revenue

Project Requirement

- Parking Guidance
- Manual Payment & parking fee management
- Higher accuracy of license recognition



Device List

NO.	Device Name	Model	Unit	Quantity
1	Access ANPR Camera	DHI-ITC237-PW1A-IRZ	Set	4
2	Barrier	IPMECD-2012A	Set	4
3	Spot Detection Camera	DHI-ITC314-PH1B-F2	Set	102
4	Platform Server	PMS8000	Set	1
5	Recognition Server	DHI-IVS-T7000-R-PRO		1
6	Storage	EVS5024		1
7	Outdoor LED Screen	DHI-IPMECP-218AA DHI-IPMECP-248AA DHI-IPMPGI-211AA-M	set	8
8	Indoor LED Screen	IPMPGI-220AA	Set	5



North American Parking Project

Mexico Shopping Center



■ Project Overview

6 layers parking building near the shopping mall in city center. Nearly 1000 parking spaces in total.

- 17 indoor guidance screens and 2 outdoor guidance screens
- 2 digital signage for information display and car finding
- PMS Platform

■ Mexico Shopping Center



■ Project Overview

Parking guidance;

Find my car and information and ads display

24*7 hours Video record in the Parking Lot, protect the customer property.



Device List

NO.	Device Name	Model	Quantity
1	Spot Detection Camera	ITC214-PH2A-F3	73
2	Spot Detection Camera	ITC314-PH2A-F3	455
3	Guidance Screen	IPMPGI-120AC	17
4	Power Supply	AC100V~240V-53V120W-V-SOY	
5	Guidance Screen(Six Layer)	DHI-IPMPGI-261AA	2
6	Digital Kiosk(Digital Signage with car plate tracking function)	DH-LDV49-SAI200T	2
7	Parking Management Platform	DHI-PMS8000	1
8	EVS	EVS7048D-R	1

Thank You!

