



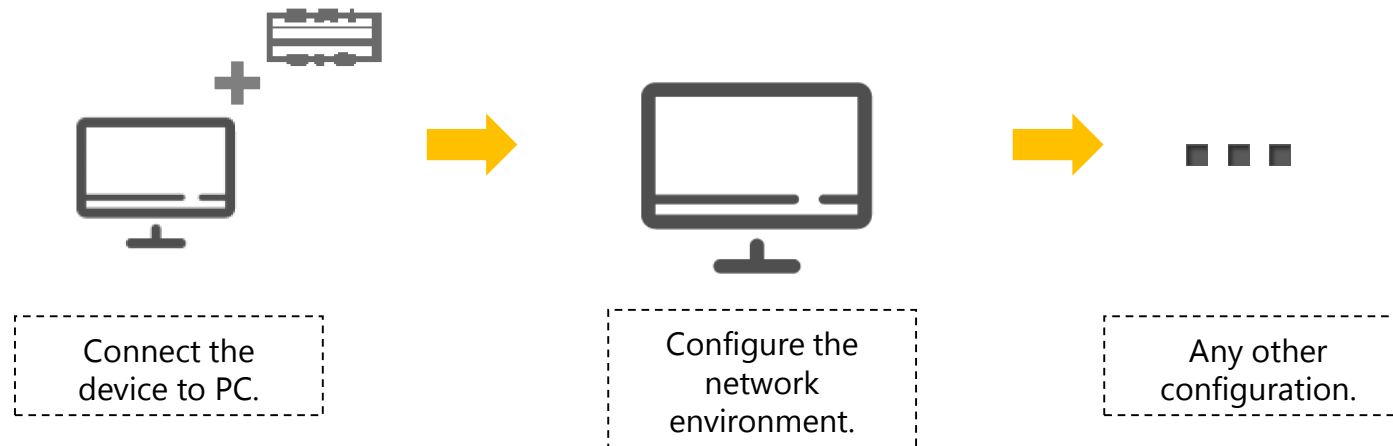
How to Start Access Control Configuration?

CONTENT

- 1. Network Environment Configure**
- 2. Find IP address and Firmware version**
- 3. Upgrade the device**
- 4. Reset the device**

Overview

- In order to start the configuration of the Video Intercom system. First, you have to configure the network environment. And then connect the devices to your management PC.

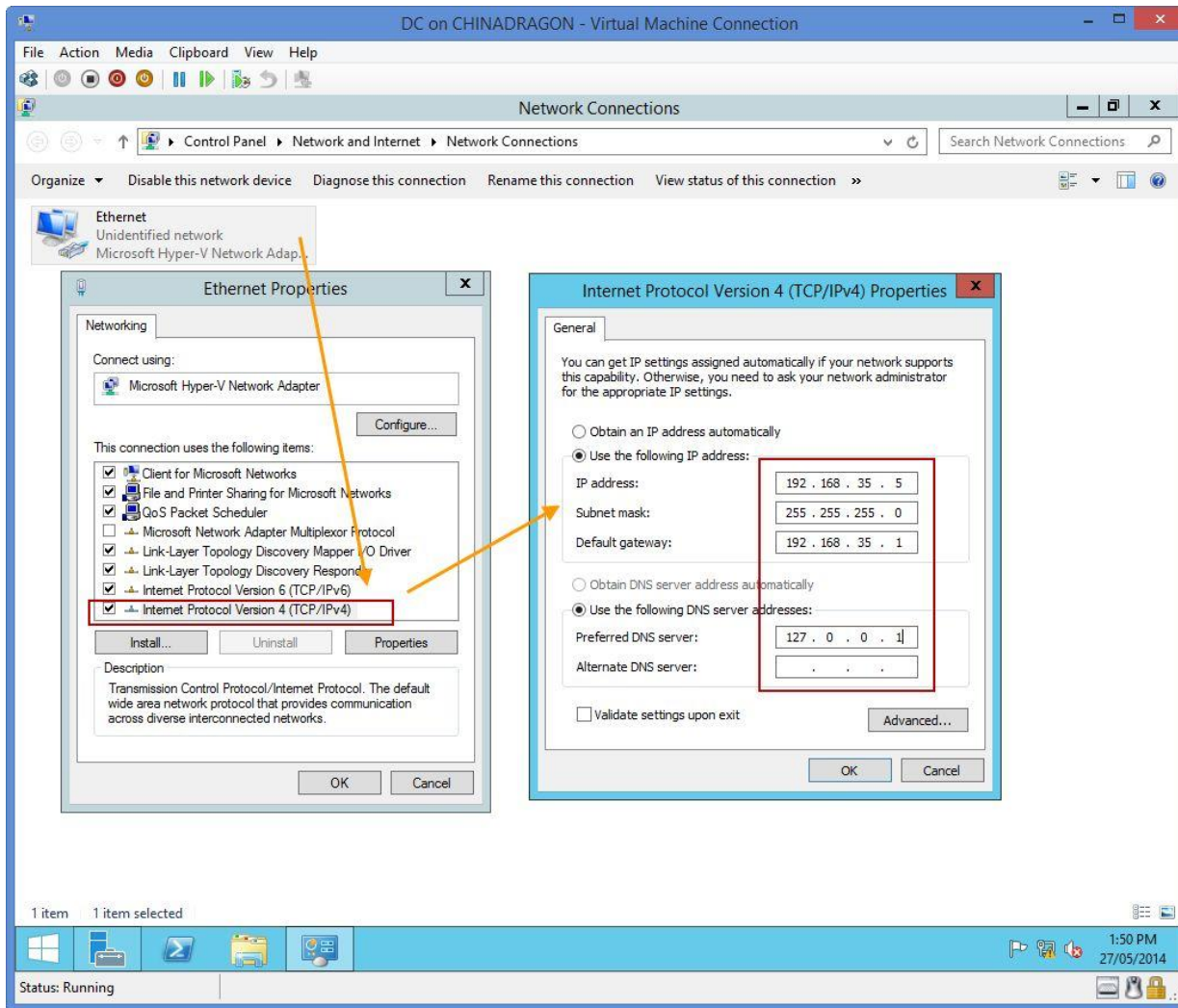




1. Network Environment Configure



Network Environment-Initial Setting



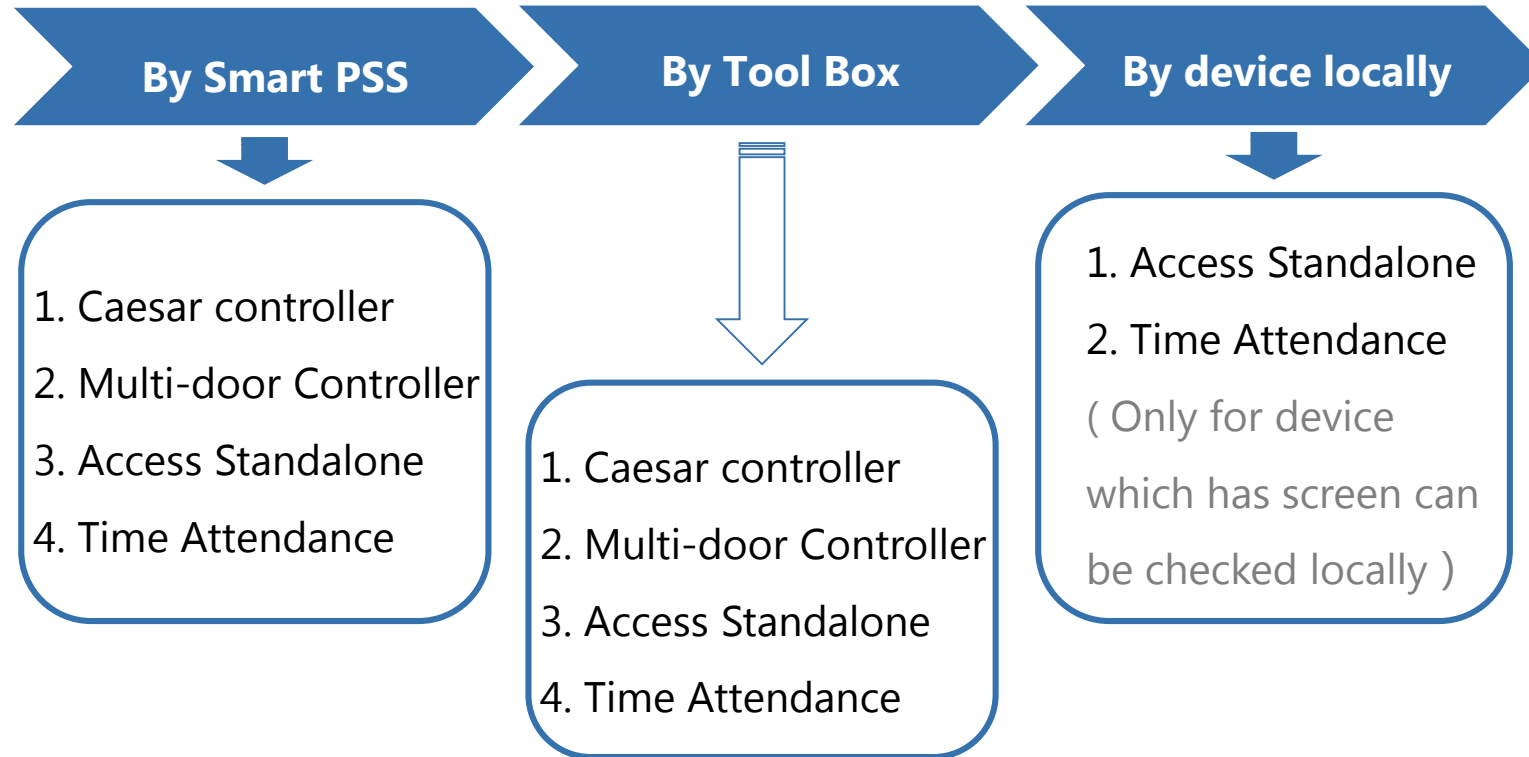
- Before you configure the device, you have to keep your computer and devices in the same network segment.
- ① Connect the device to the computer by TCP/IP.
- ② Set the IP address of your computer to the same segment with the device



2. Find IP address and Firmware version



Find IP Address and Firmware version



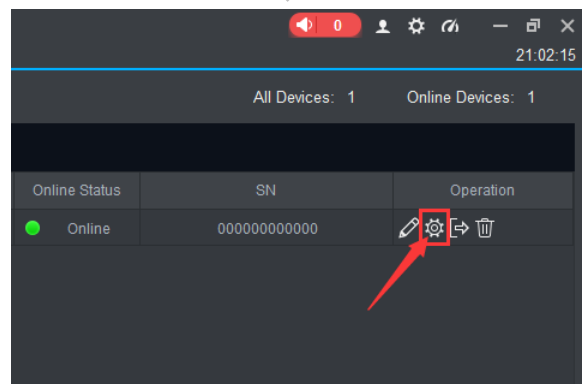
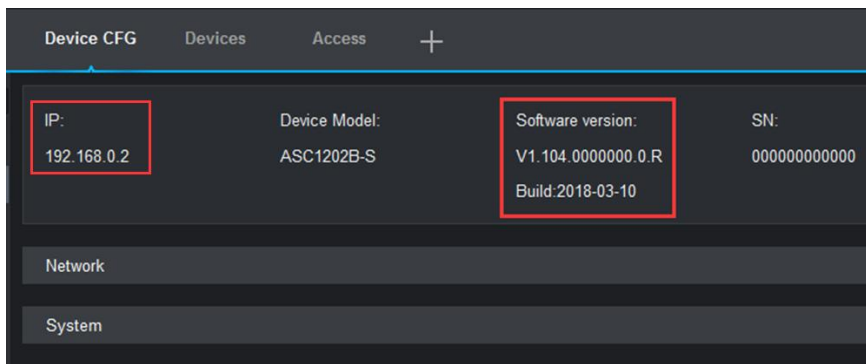
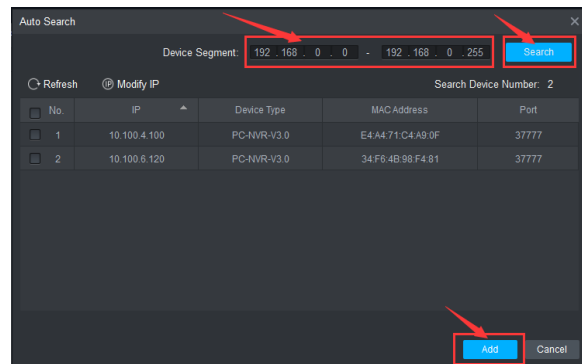
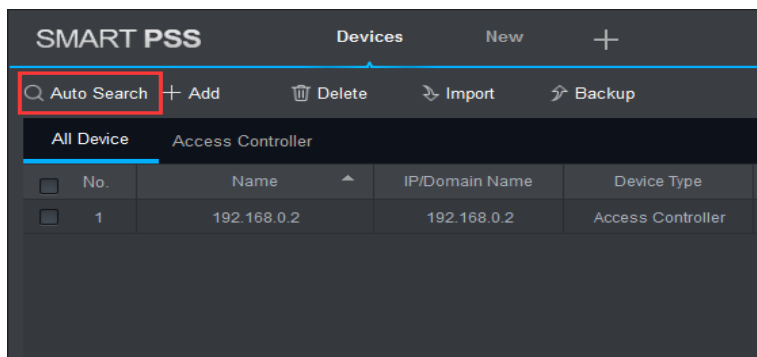
Find IP Address and Firmware version

By Smart PSS

By Tool box

By device locally

Example Controller : ASC1202B-S



- ① SmartPSS -> Device
- ② Click "Auto Search"
- ③ Input the Device Segment and then click "Search"
- ④ Select the device of which you are configuring and then click "Add".
- ⑤ Click to enter into the device CFG page.
- ⑥ You can see the IP address and firmware version of the device.

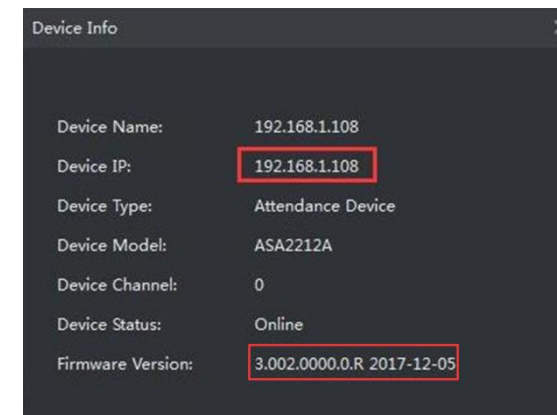
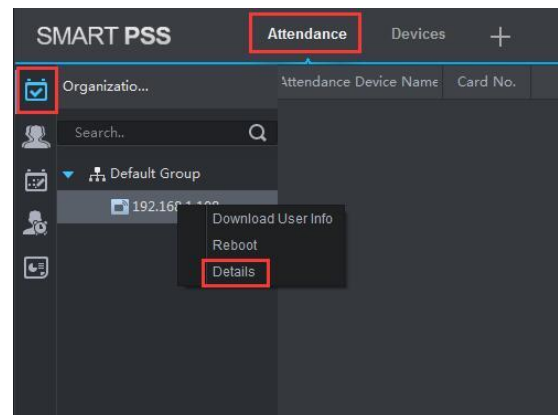
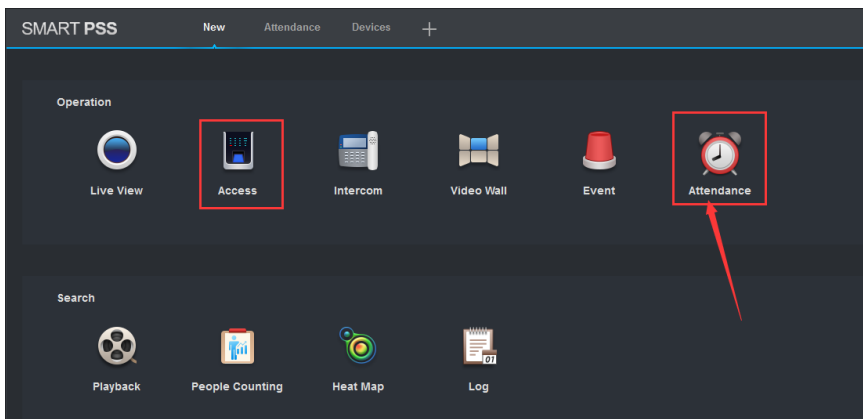
Find IP Address and Firmware version

By Smart PSS

By Tool box

By device locally

Example Time Attendance : ASA2212A



- Click the Attendance -> Right click the device IP -> Click the Details -> Device IP.

Find IP Address and Firmware version

By Smart PSS

By Tool box

By device locally

1 Devices found

(1) IP icon

(2) Refresh icon



Search setting

Uninitialized

Initialized

IPV4

NO.	Status	Type	Model	IP	MAC	Version	Operate
1	Initialized	ASC	ASC1202B-S	192.168.0.2	14:A7:8B:E1:DC:E3	V1.104.0000000.0.R	

- ① Tool Box -> Click  to enter the searching page.
- ② Click  to search the device.
- ③ You will see the IP address and version of the device.

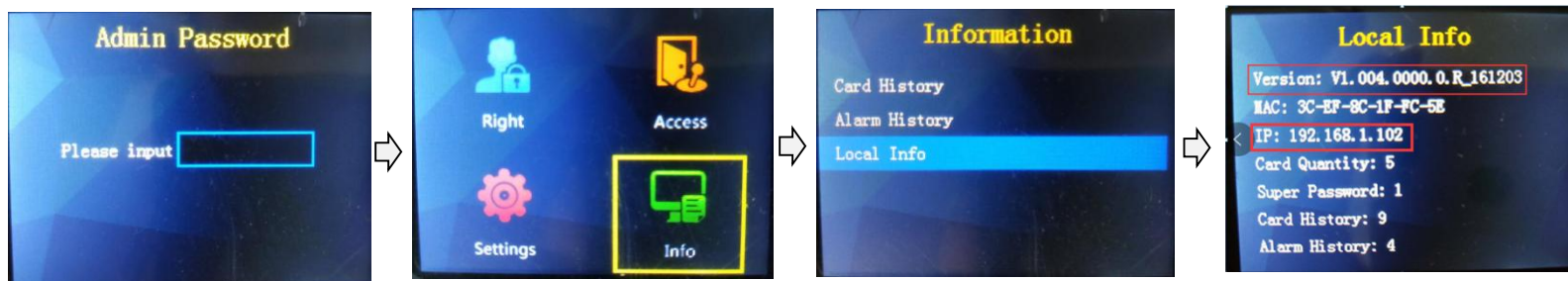
Find IP Address and Firmware version




By Smart PSS

By Tool box

By device locally

Example Access Standalone : ASI1212A



- ① Press  in the keypad to input the password "88888888".
- ② Press  in the keypad to move the selection to "Info", to enter into the information page.
- ③ Move to "Local Info", press  to move to the local info page.

Example Time Attendance : ASA2212A



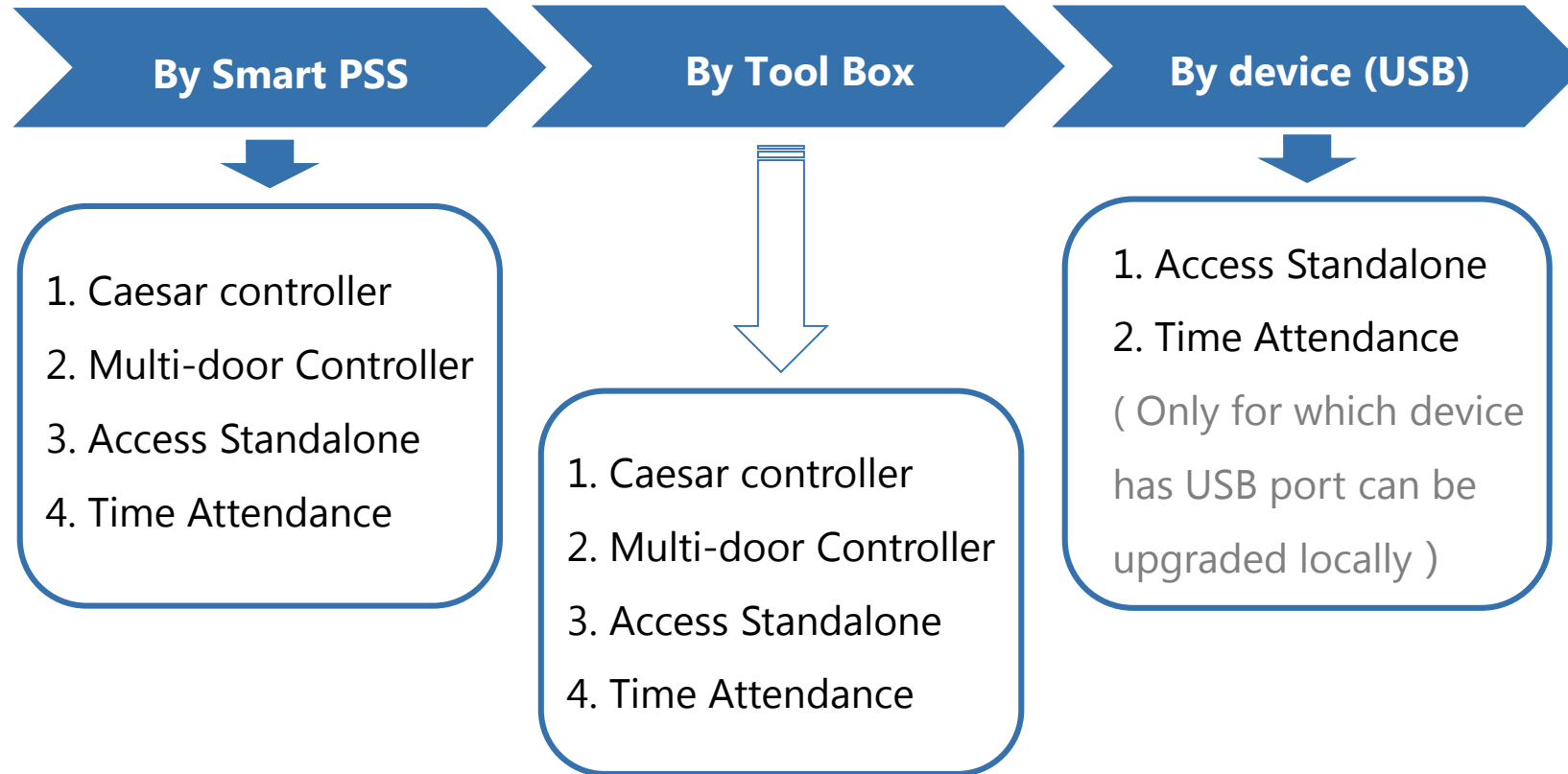
- ① Press "OK" to enter into the configure page.
- ② Move to the "SysInfo" and then press "OK".
- ③ Move to the "Device Info" and then press "OK". Then you can see the local information.



3. Upgrade the device



Upgrade the device



Upgrade the device

- Before upgrade, you have to download the latest firmware.

1. Check the latest firmware version in gks website.

Product / Products / Intelligent Building / 02.Access Control / 05.Firmware

Name	AveScore	ClickCount	DownCount	File Size	CreateTime
ACSclicient					September 15, 2017
SDK					September 15, 2017
一体机					September 15, 2017
控制器					September 15, 2017
老款指纹采集仪升级工具					September 15, 2017
Access Control Firmware List_201802.xlsx	0.0	37	74	199 KB	May 25
Access Control-modify ip and upgrade.docx	0.0	7	30	655 KB	September 15, 2017
ConfigureTool.rar	0.0	5	23	222 KB	May 25
JSON_DaoNa_20160408.rar	0.0	0	10	260 KB	September 15, 2017
Tftpd32-3.51-setup.rar	0.0	2	14	530 KB	September 15, 2017



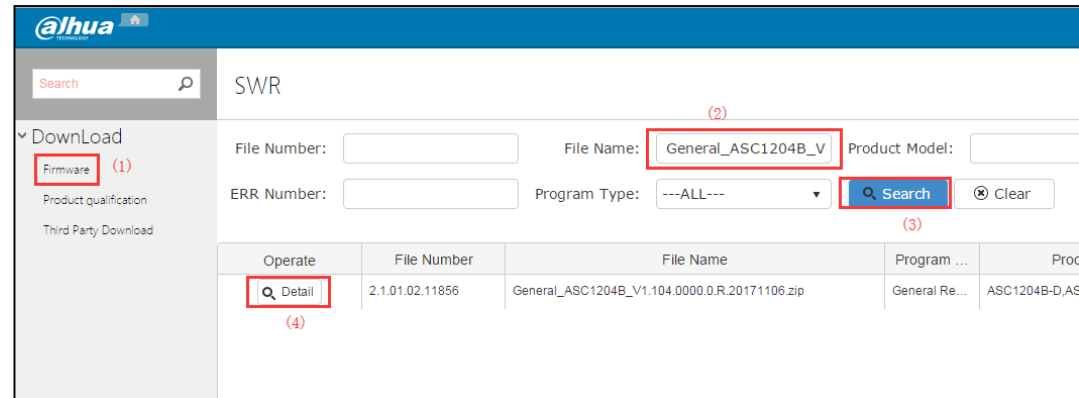
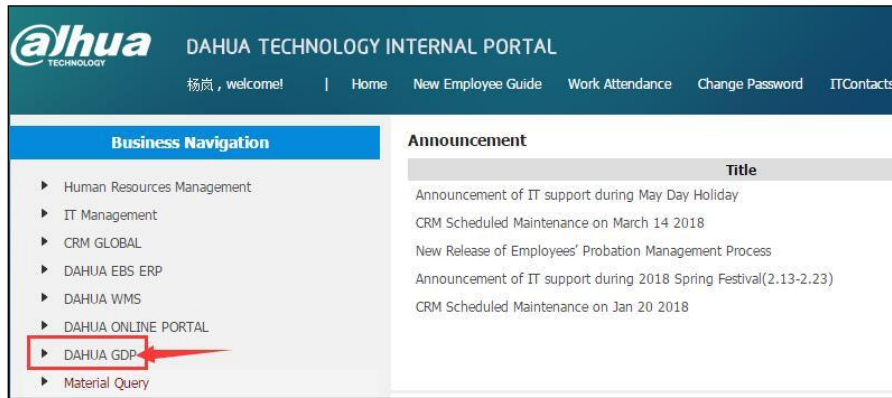
日期	产品型号	文件编号	文件名称
20171026	DHI-ASC2204C-H ASC2204C-H	2.1.01.01.12683 2.1.01.01.12682	General_ASC2204C_Eng_V1.000.0000000.0.R.20171026.zip DH_ASC2204C_Eng_V1.000.0000000.0.R.20171026.zip
20171101	DHI-ASC2102B-T ASC2102B-T	2.1.01.02.11890	General_ASC2102B-T_V1.000.0000.0.R.20171101.zip
20171101	DHI-ASC2104B-T ASC2104B-T	2.1.01.02.11892	General_ASC2104B-T_V1.000.0000.0.R.20171101.zip
20171106	ASC1202B-D DHI-ASC1202B-D	2.1.01.02.11854	General_ASC1202B_V1.104.0000.0.R.20171106.zip
20171106	ASC1204B-S DHI-ASC1204B-S	2.1.01.02.11856	General_ASC1204B_V1.104.0000.0.R.20171106.zip
20171106	ASC1202C-D DHI-ASC1202C-D	2.1.01.02.11855	General_ASC1202C_V1.104.0000.0.R.20171106.zip
20171106	ASC1204C-S DHI-ASC1204C-S	2.1.01.02.11857	General_ASC1204C_V1.104.0000.0.R.20171106.zip
20170210	ASC1204C-D DHI-ASC1204C-D	2.1.01.02.11357	General_ASC1208C_MCU_V1.000.0000.0.R.20170210.zip
	ASC1208C-S DHI-ASC1208C-S		
20171110	ASI1212D ASI1212D-D	2.1.02.01.17704	General_ASI1212D_Eng_V3.203.0000000.0.R.20171110.zip

- ① Login gks.dahuasecurity.com website.
- ② [Product](#) / [Products](#) / [Intelligent Building](#) / [02.Access Control](#) / [05.Firmware](#)
- ③ Check the latest firmware version in the excel of the device that you want to upgrade.

Upgrade the device

- Before upgrade, you have to download the latest firmware.

2. Download the latest firmware.



- ① oaglobal.dahuatech.com -> DAHUA GDP-> Firmware
- ② Input the full name of the latest firmware version you have checked.
- ③ Click "Search" to search the firmware.
- ④ Choose the program type as Baseline and General Revision
- ⑤ Click Detail to download the [***.zip] file
- ⑥ Unzip the file and save the [***.bin] file

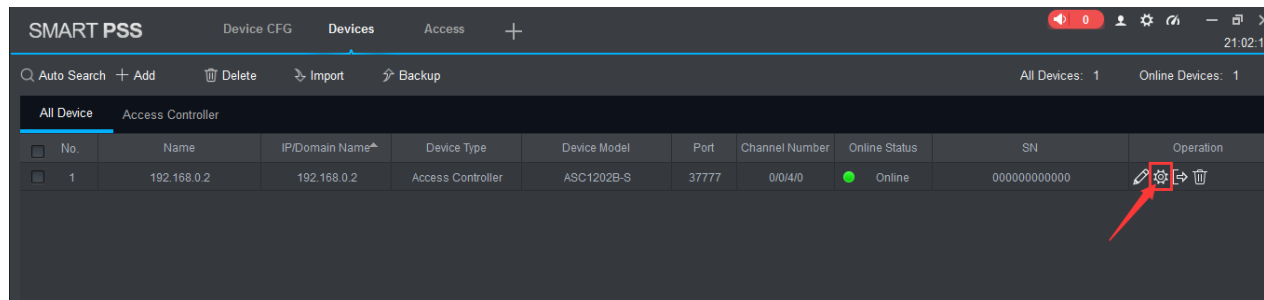



Upgrade the device

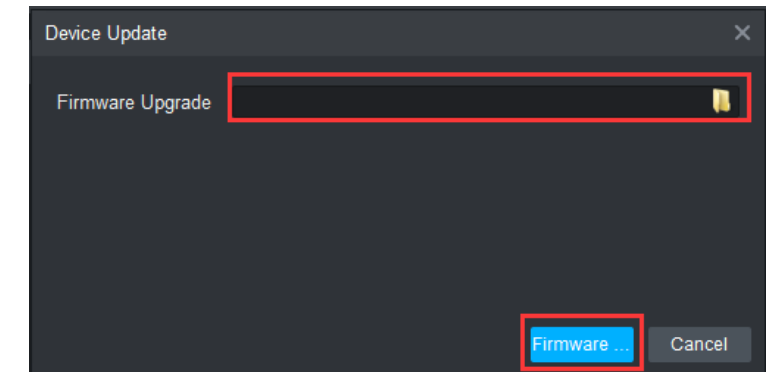
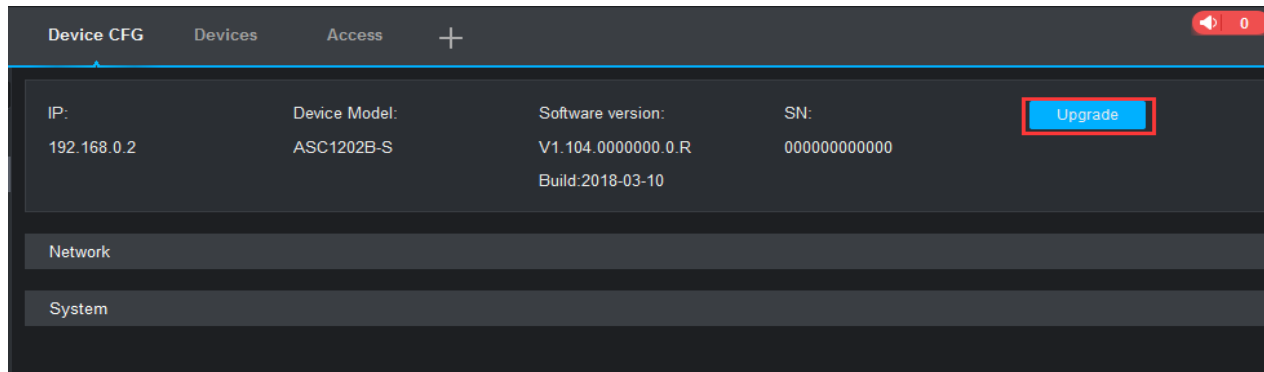
By Smart PSS

By Tool Box

By device (USB)



- ① SmartPSS -> Device
- ② Click  to enter into the device CFG page
- ③ Click Upgrade.
- ④ Select the new firmware you have downloaded.
- ⑤ Click Firmware... to upgrade the device.

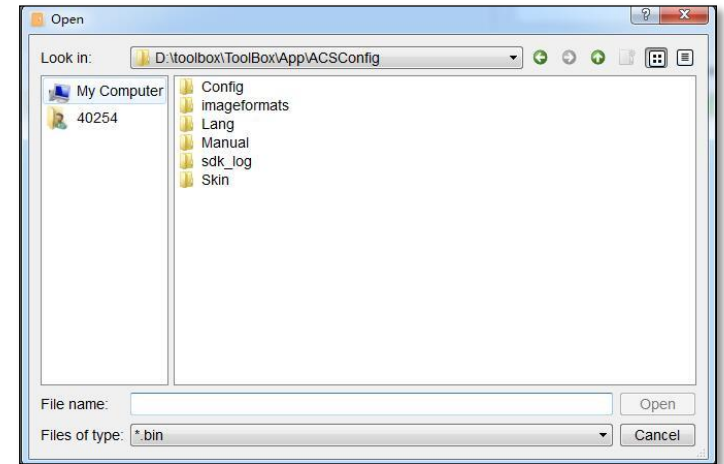
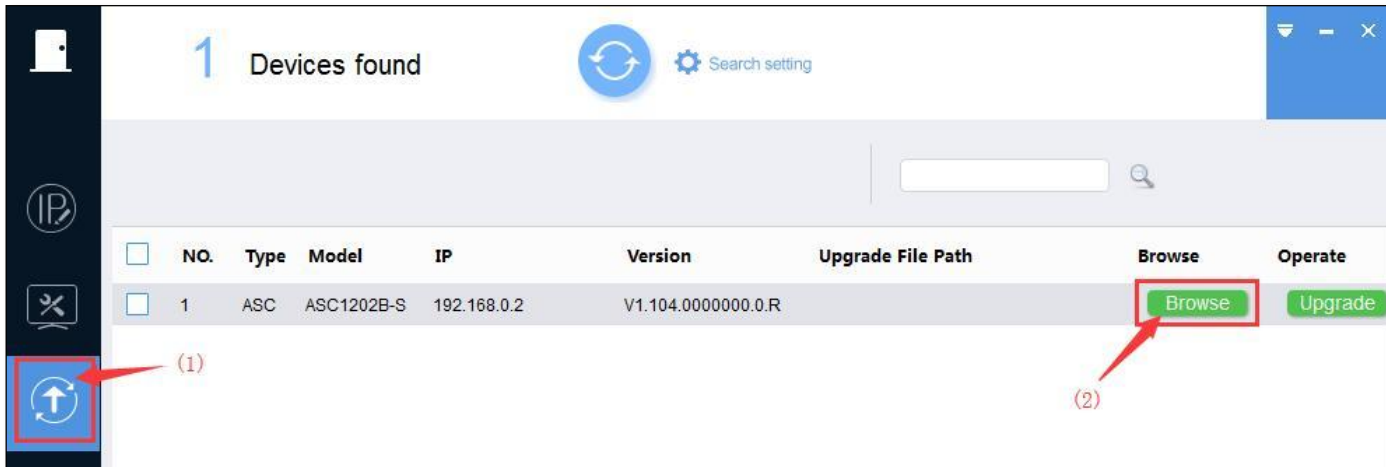



Upgrade the device

By Smart PSS

By Tool Box

By device (USB)



- ① Click  to enter the upgrade page.
- ② Click "Browse" to select the .bin file of the latest firmware you have downloaded.
- ③ Click Upgrade to upgrade the device.

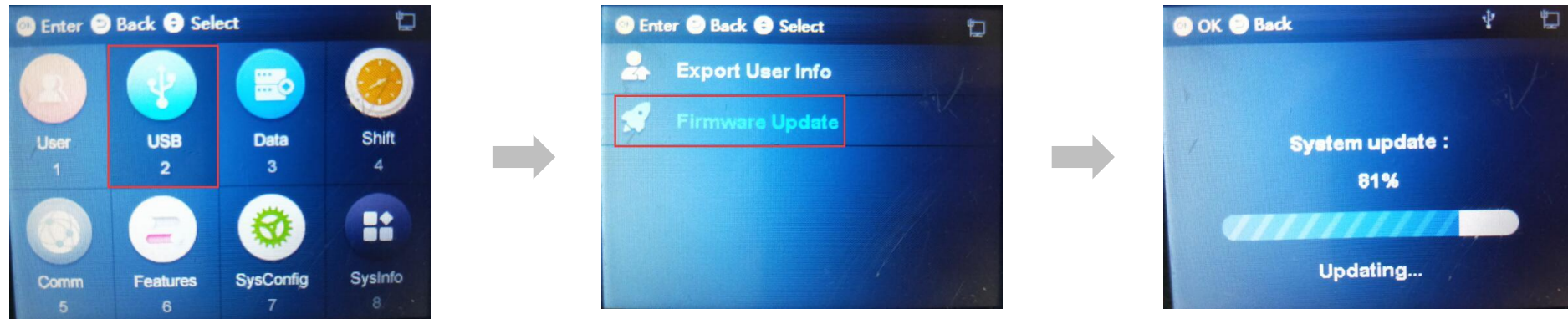
Upgrade the device

By Smart PSS

By Tool Box

By device (USB)

Example Time Attendance : ASA2212A



- ① Rename the [***.bin] file as [update.bin].
- ② Save the [update.bin] file in a USB disk.
- ③ Insert the USB disk into the port of the device .
- ④ Click "USB" in the device, move to "Firmware Update" to update the firmware of the device.

Attention point: Only standalone and Time Attendance which has screen and has USB port can support upgrade locally.

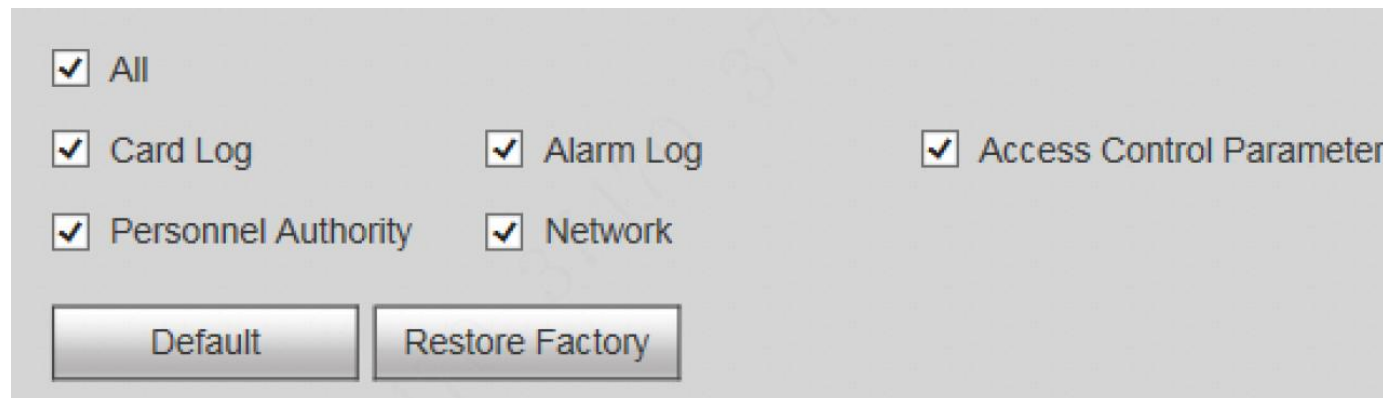


4. Reset the device



Reset the device

- Caesar Main Controller: ASC2204C-H

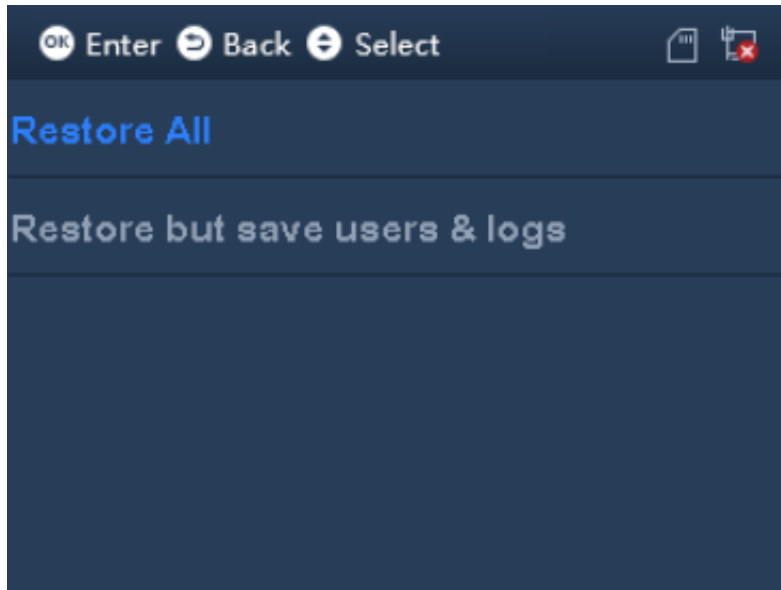



- ① Select "System Setup" -> Default
- ② Tick the items that shall be restored to default, and click "Default"

Attention point : The hole "RESET" is only for reboot the device. Inset a needle into RESET hole, and long press to reboot the controller.

Reset the device

- Example Time Attendance: ASA2212A



- ① Select SysConfig in the Home interface.
- ② Select Restore. Click  to select, and click "OK" to confirm.

Attention point : Restore default setting have two modes: delete all settings or delete all settings but only keep user and record.

THANK YOU