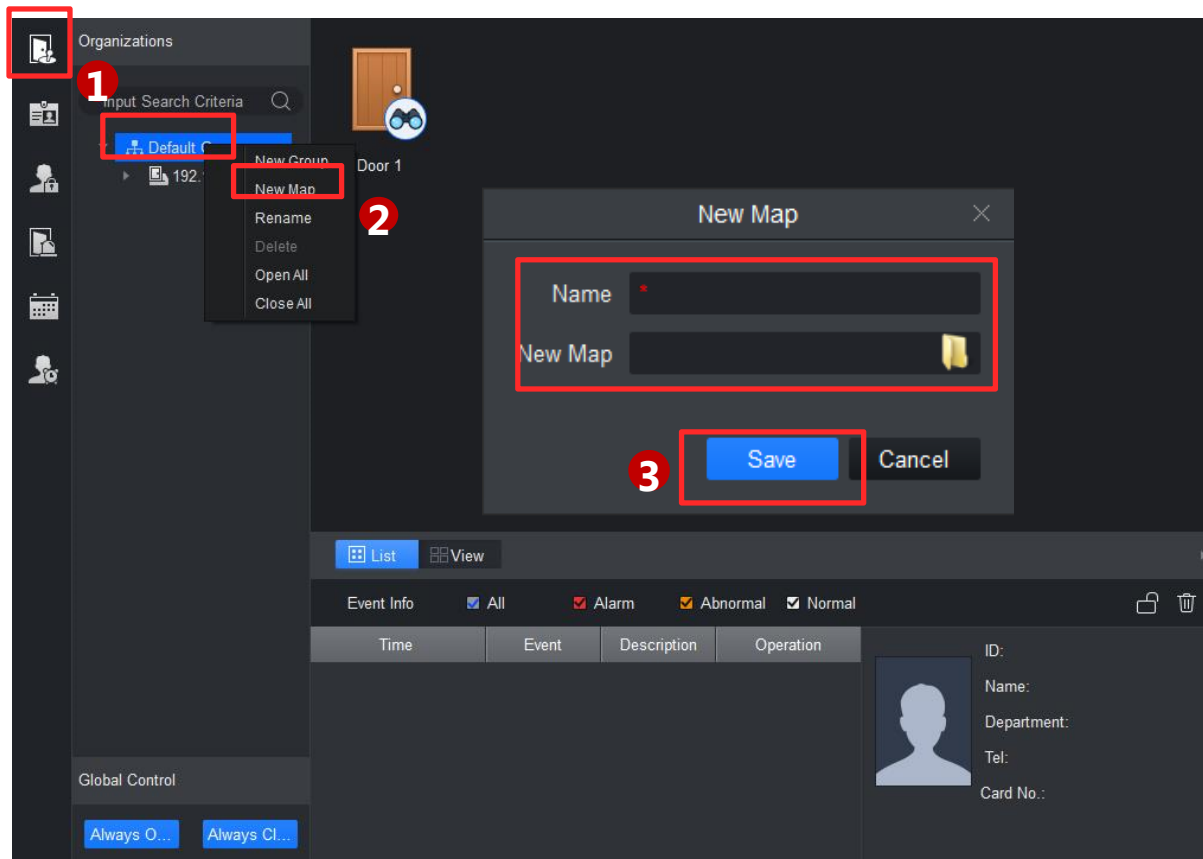


How to Add E-Map

Equipment Model	Firmware	Course Version	Date
DH-ASC1204B-S	General_ASC1204B_MCU_V1.103.0000.0.R.20170527	V1.0	2017/10/30
ASR1102A(V2)	General_ASR1102A_MCU_V2.003.0000.0.R.20170421		
ASR1102A-D(V2)	General_ASR1102A-D_MCU_V2.003.0000.0.R.20170421		
SmartPSS	V 2.01.0		

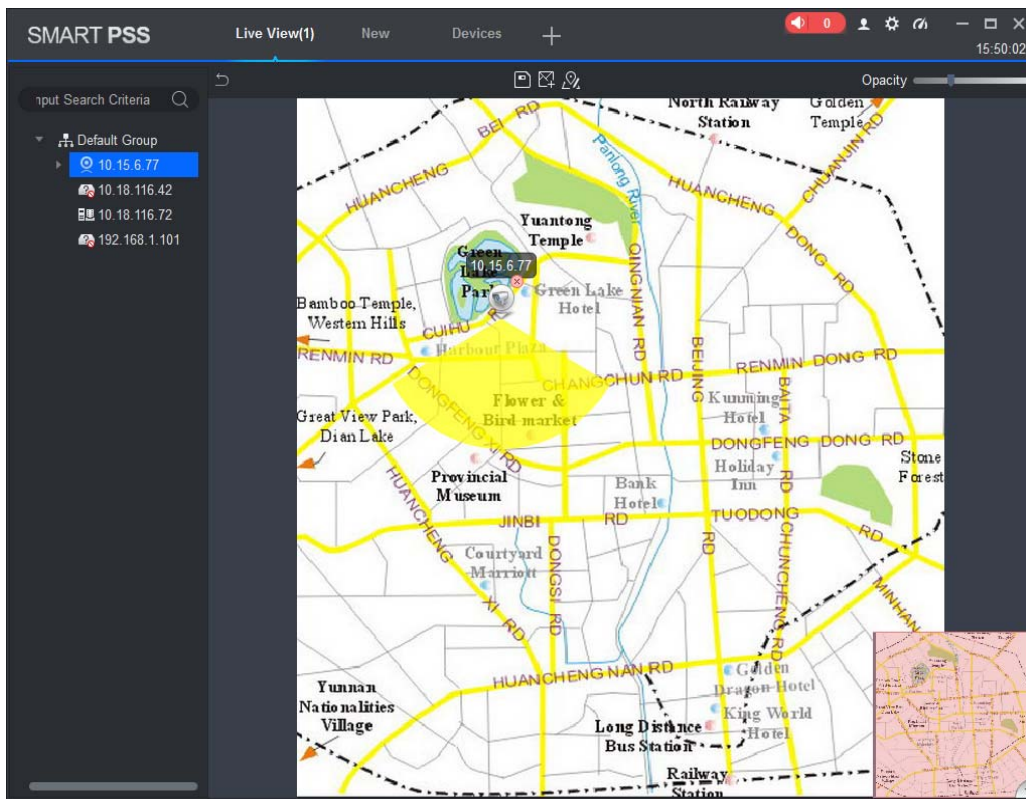
How to Add E-Map








Via E-map you can straightly know the location of video channel or alarm channel and live preview.

- ① **Right click** group in Organization Tree, select New Map;
- ② Set map name, select path of picture;
- ③ Click Save;

How to Add E-Map



Note:

- Click  create new hot zone on map. (Double click hot zone, map switch to hot zone map)
- Click  modify map name or replace map.
- Click  to adjust opacity.
- At the lower right corner, you can see aerial view of map. Click  to close aerial view and click  to open aerial view.
- Drag camera to corresponding monitor position on map to adjust camera monitor range, or drag camera alarm input into map

THANK YOU