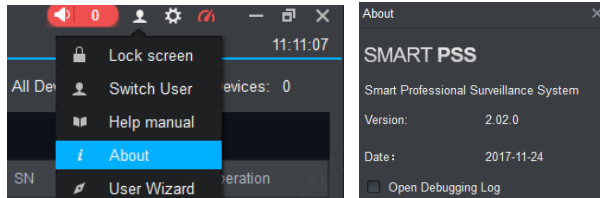


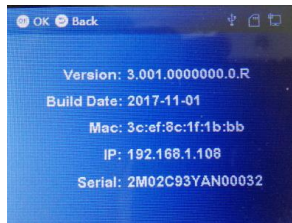
# ASA2212A Connect to SmartPss 2.02

## 1. Software or firmware request

- a. Smartpss Version: **Ver 2.02**



- b. ASA2212A Firmware: **3.001 2017-11-01** or above  
Menu->8 SysInfo->Device Info



## 2. Upgrade firmware and Initialized password Steps (to Ver 3.001 2017-11-01 or above )

**Download Firmware updates kit (firmware +tools):**

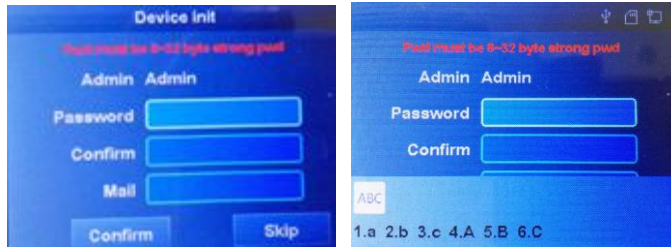
**GKS:**

[https://gks.dahuasecurity.com/\\_layouts/15/download.aspx?SourceUrl=%2FDocuments%2FProduct%2FProducts%2FIntelligent%20Building%2F07.Time%20Attendance%2F09.ACSconfig---ASA2212A%20%20initialize%20%E5%88%9D%E5%A7%8B%E5%8C%96%E5%B7%A5%E5%85%B7%2FASA2212A%20firmware%20update%20kit%20.rar](https://gks.dahuasecurity.com/_layouts/15/download.aspx?SourceUrl=%2FDocuments%2FProduct%2FProducts%2FIntelligent%20Building%2F07.Time%20Attendance%2F09.ACSconfig---ASA2212A%20%20initialize%20%E5%88%9D%E5%A7%8B%E5%8C%96%E5%B7%A5%E5%85%B7%2FASA2212A%20firmware%20update%20kit%20.rar)

**Or Dropbox**

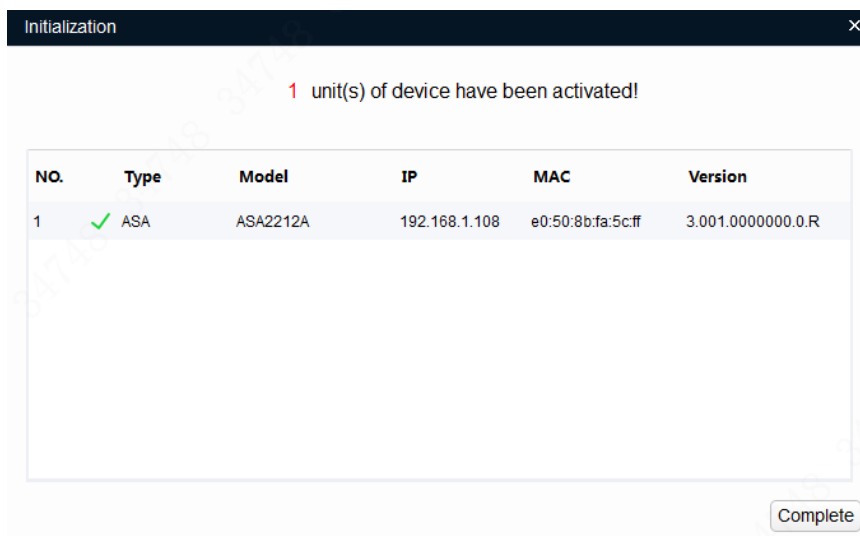
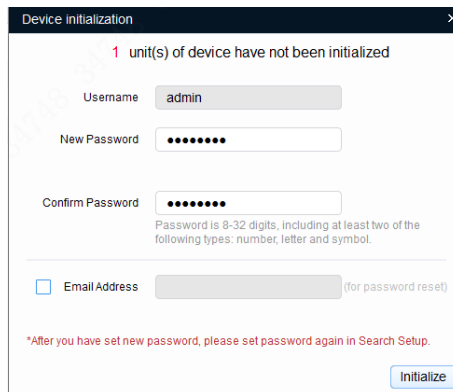
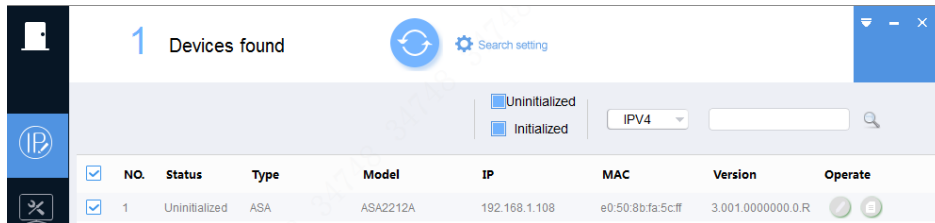
<https://www.dropbox.com/s/yvduxr88fteoba/asa2212a%20firmware%20update%20kit%20.rar?dl=0>

- a. There are two methods update firmware and Initialization
- **Via USB** upgrade initialization and edit the password in device  
Notice: firmware should rename to update (full name is update.bin); the update.bin in root in usb disk ,insert to device ,menu->usb->firmware update; edit password ,press ok ,then through press **\* key** to switch typewriting



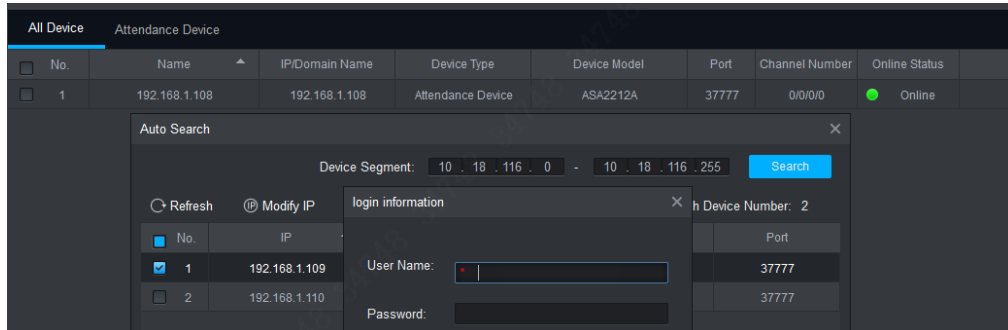
(or upgrade the firmware via usb ,initialize password via asconfing ver: 1.04)

- Via tools to upgrade firmware and Initialization  
 Notice: device default IP is 192.168.1.108 ;Acsonfig tool could be download in above kit, **1.04 T version**)

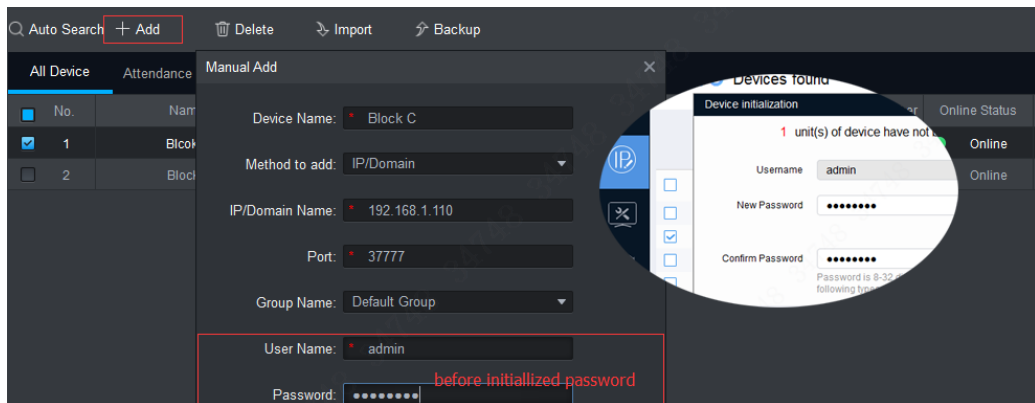


### 3. Add Device in SmartPss

- a. Auto Search: User Name is admin ,password is the before step initialized password Notice: Please shut down acsconfig or configtools



- b. Add Time attendance in manual .User Name :admin ,password also initialized password



- c. Add Access Point as time attendance (access device and user authorization release still in access module)

